

Sample Templates Document: GPC_Dialog01.blu



You agree not to reproduce, other than for your own personal, noncommercial use, all or part of this document on any medium whatsoever without permission of Schneider Electric, given in writing. You also agree not to establish any hypertext links to this document or its content.

Schneider Electric does not grant any right or license for the personal and noncommercial use of the document or its content, except for a non-exclusive license to consult it on an "as is" basis, at your own risk. All other rights are reserved.

All pertinent state, regional, and local safety regulations must be observed when installing and using this product. For reasons of safety and to help ensure compliance with documented system data, only the manufacturer should perform repairs to components.

When devices are used for applications with technical safety requirements, the relevant instructions must be followed.

Failure to use Schneider Electric software or approved software with our hardware products may result in injury, harm, or improper operating results.

Failure to observe this information can result in injury or equipment damage.

Safety Information



Important Information

NOTICE

Read these instructions carefully, and look at the equipment to become familiar with the device before trying to install, operate, service, or maintain it. The following special messages may appear throughout this documentation or on the equipment to warn of potential hazards or to call attention to information that clarifies or simplifies a procedure.



The addition of this symbol to a “Danger” or “Warning” safety label indicates that an electrical hazard exists which will result in personal injury if the instructions are not followed.



This is the safety alert symbol. It is used to alert you to potential personal injury hazards. Obey all safety messages that follow this symbol to avoid possible injury or death.

DANGER

DANGER indicates a hazardous situation which, if not avoided, **will result in** death or serious injury.

WARNING

WARNING indicates a hazardous situation which, if not avoided, **could result in** death or serious injury.

CAUTION

CAUTION indicates a hazardous situation which, if not avoided, **could result in** minor or moderate injury.

NOTICE

NOTICE is used to address practices not related to physical injury.

PLEASE NOTE

Electrical equipment should be installed, operated, serviced, and maintained only by qualified personnel. No responsibility is assumed by Schneider Electric for any consequences arising out of the use of this material.

A qualified person is one who has skills and knowledge related to the construction and operation of electrical equipment and its installation, and has received safety training to recognize and avoid the hazards involved.

About the Book



At a Glance

Document Scope

This manual describes how to use this product.

Validity Note

This documentation is valid for this product.

The technical characteristics of the device(s) described in this manual also appear online at <http://www.pro-face.com>.

The characteristics presented in the present document should be the same as those that appear online. In line with our policy of constant improvement we may revise content over time to improve clarity and accuracy. In the event that you see a difference between the document and online information, use the online information as your reference.

Registered Trademarks

Microsoft and Windows are registered trademarks of Microsoft Corporation in the United States and/or other countries.

Product names used in this manual may be the registered trademarks owned by the respective proprietors.

Related Documents

You can download the manuals related to this product, such as the software manual, from our support site at <http://www.pro-face.com/trans/en/manual/1001.html>.

Product Related Information

If the equipment is used in a manner not specified by the manufacturer, the protection provided by the equipment may be impaired.

In the event this product does not run properly due to whatever reason, it may be difficult or impossible to identify a function. Functions that may present a hazard if not immediately executed, such as a fuel shut-off, must be provided independently of this product. The machine's control system design must take into account the operator being unable to control the machine or making mistakes in the control of the machine.

WARNING

UNINTENDED EQUIPMENT OPERATION

The application of this product requires expertise in the design and programming of control systems. Only persons with such expertise should be allowed to program, install, alter, and apply this product.

- Follow all local and national safety standards.

Failure to follow these instructions can result in death, serious injury, or equipment damage.

For additional information, refer to NEMA ICS 1.1 (latest edition), "Safety Guidelines for the Application, Installation, and Maintenance of Solid State Control" and to NEMA ICS 7.1 (latest edition), "Safety Standards for Construction and Guide for Selection, Installation and Operation of Adjustable-Speed Drive Systems" or their equivalent governing your particular location.

Table of Content

Safety Information	3
About the Book	4
Template Overview	6
Project structure	6
Run Time Behavior	7
How to copy the objects to your project file	8
How to change Dialog Variables.....	14
How to change Dialog Text	16

Target: ST-6500WAD

Driver: None

BLUE version 3.2 SP1 or later

Template Overview

This template has a Dialog with OK, Cancel and Close buttons.

Project structure

On Combination_Demo screen, one content display is placed. Content display (Content538) is called in Combination_Demo screen.

Screen		
Combination_Demo	ContentDisplay_GPC_Dialog01 (Content ID: 538)	GPC_Dialog01



Run Time Behavior

Runtime/Simulation of this template displays a switch.

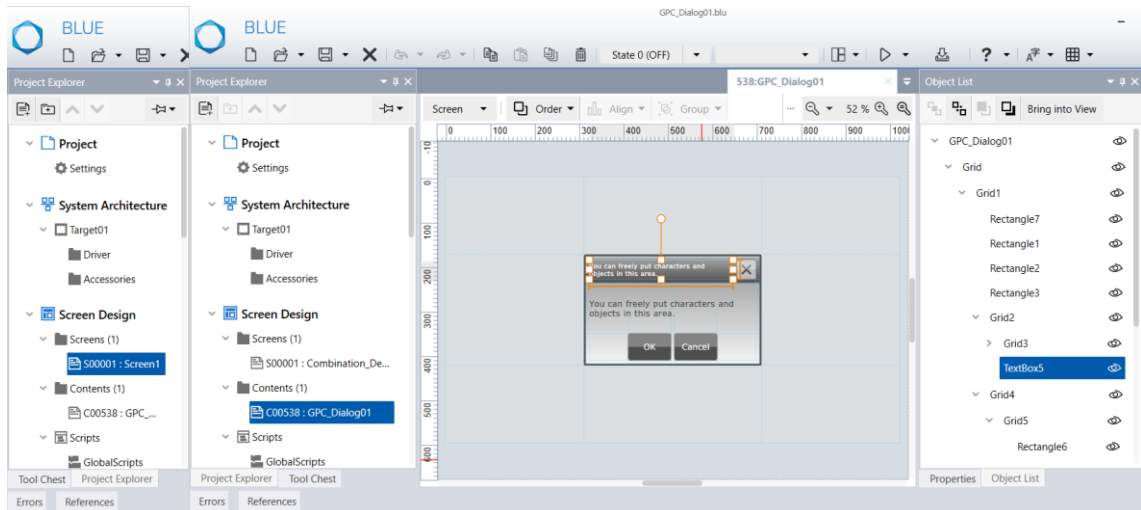
Click on the switch to popup the dialog.

Click on OK to momentarily ON the linked variable & close the dialog.


Click on Cancel and Close buttons to close the dialog.

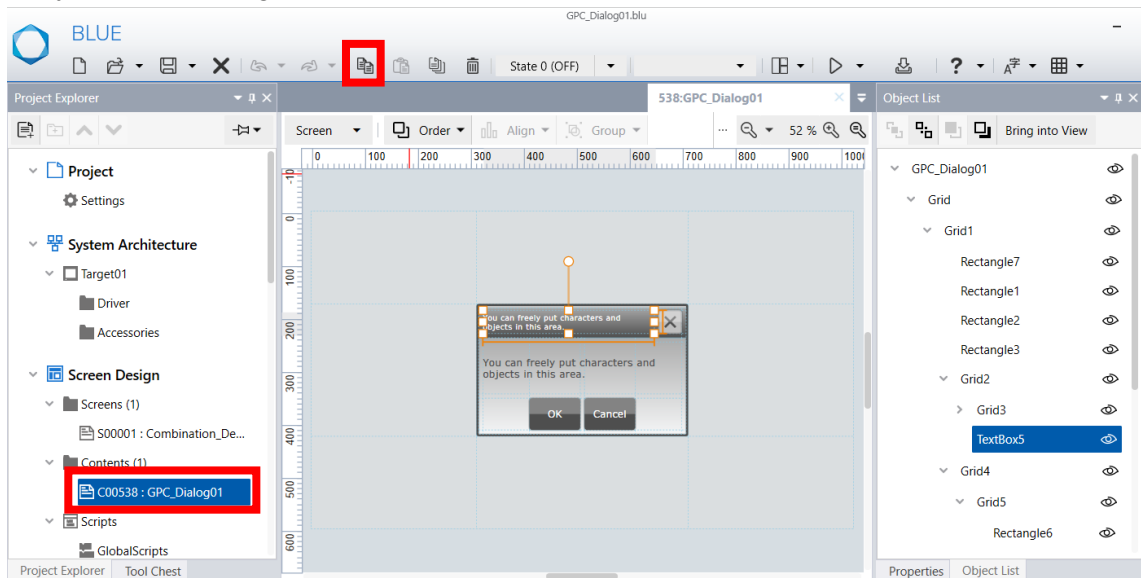
How to copy the objects to your project file

1. Open your project file and downloaded project file simultaneously.




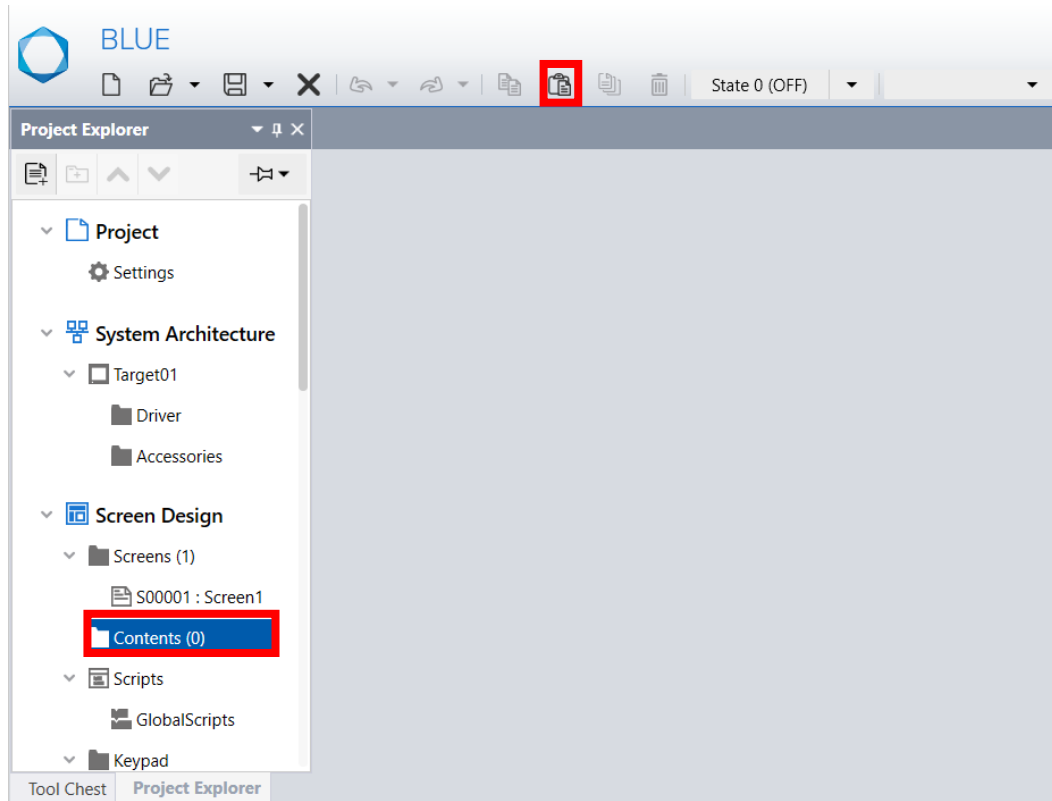
2. Open the downloaded project file.

Click the Content:C00538 from “Contents” and copy the Dialog content using  copy icon from the global Toolbar.



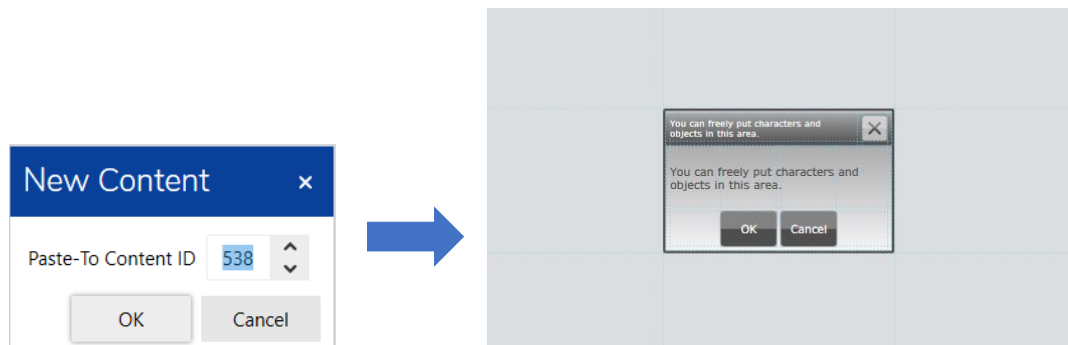
3. Open your project file.

Click “Contents” and then click on the paste  icon from the global Toolbar.

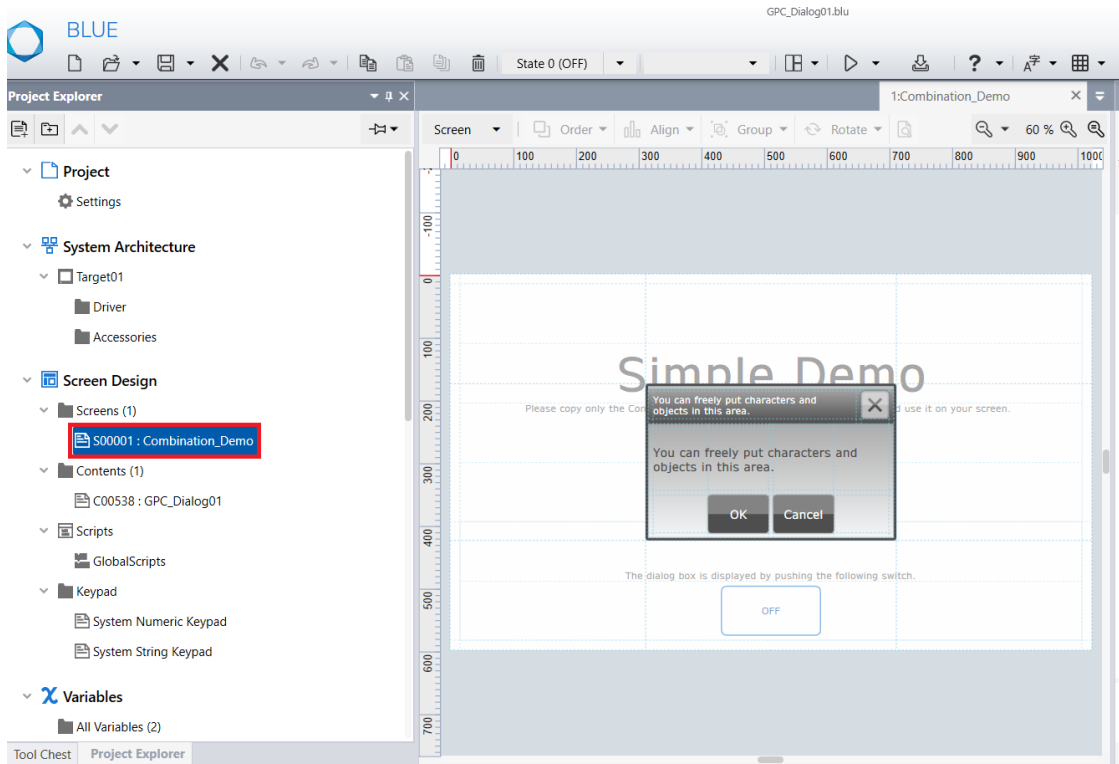


4. Select desired content ID and click “OK”.

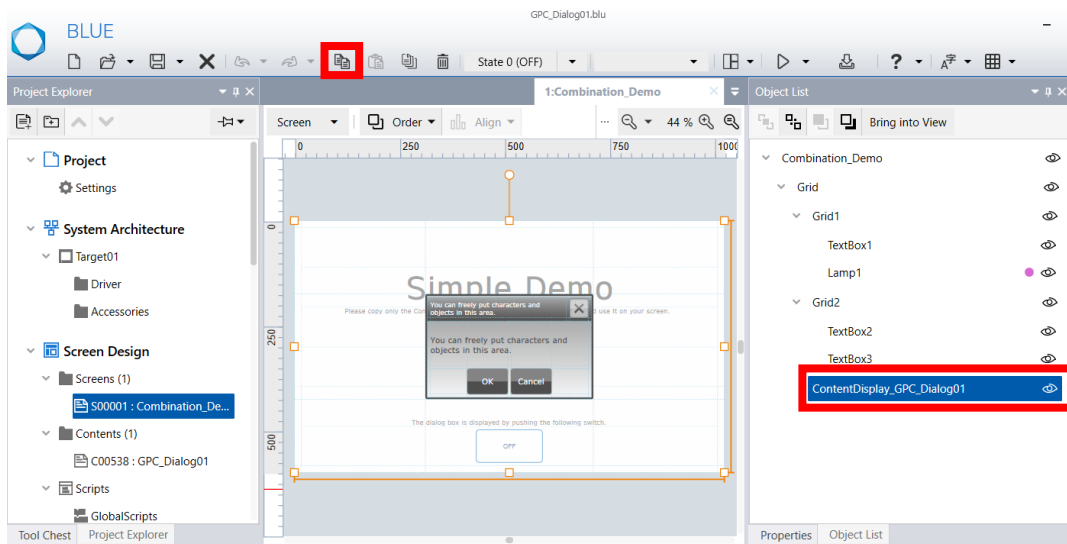
Result: Copied content is successfully pasted in your project.



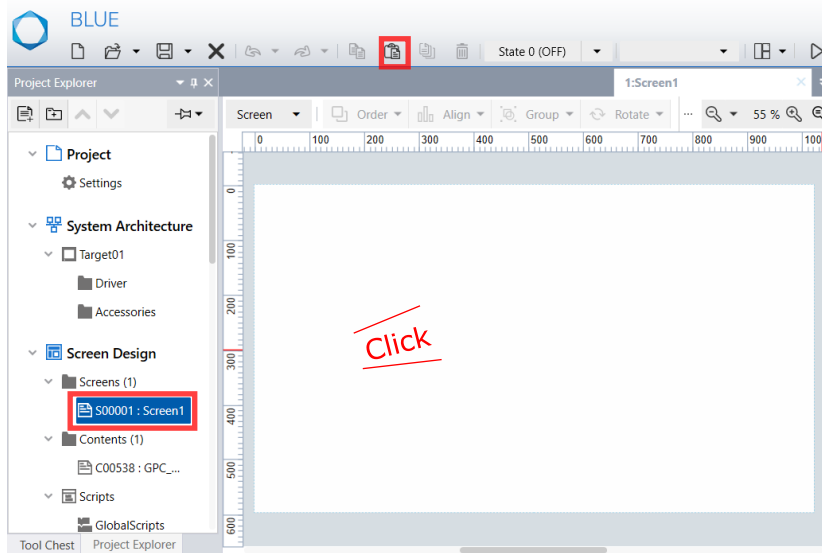
5. Open the downloaded project file and select the Combination_Demo Screen.



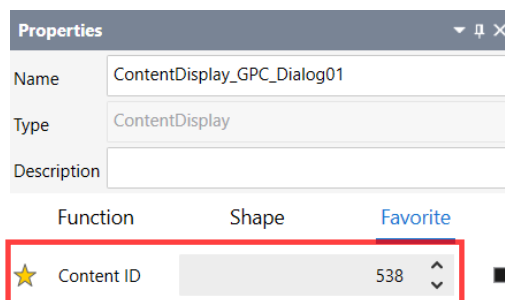
6. In Object list, select the ContentDisplay_GPC_Dialog01 and click the copy icon from the global Toolbar.



- Open your project file, Select the screen that you want to paste it.
Click on the screen area and then paste it using the paste icon from the global
Toolbar.

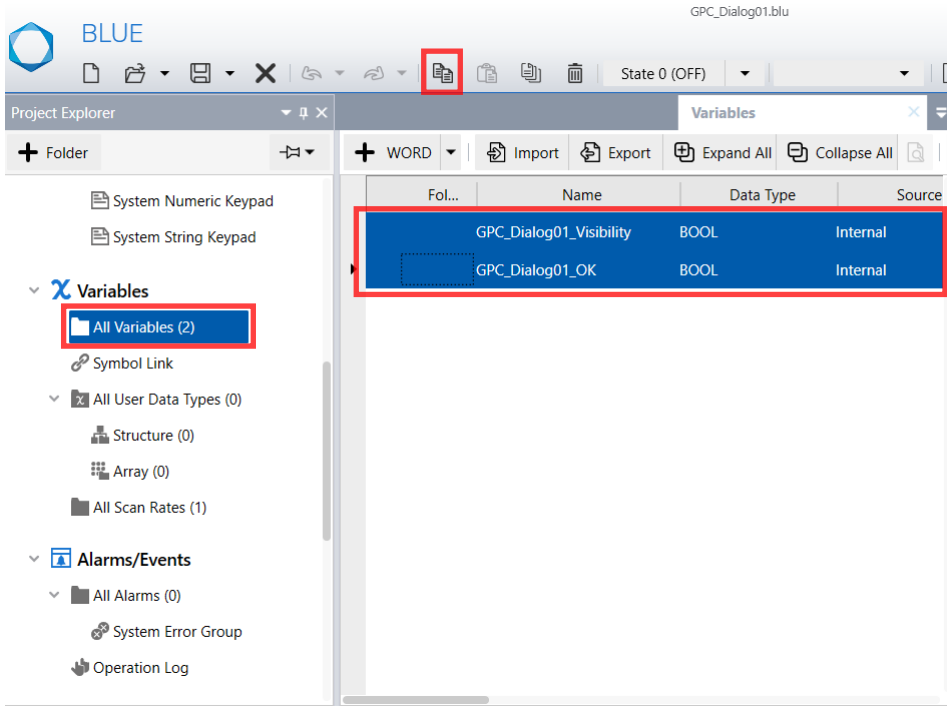


- In Properties tab, Select the Content ID of ContentDisplay_GPC_Dialog01.

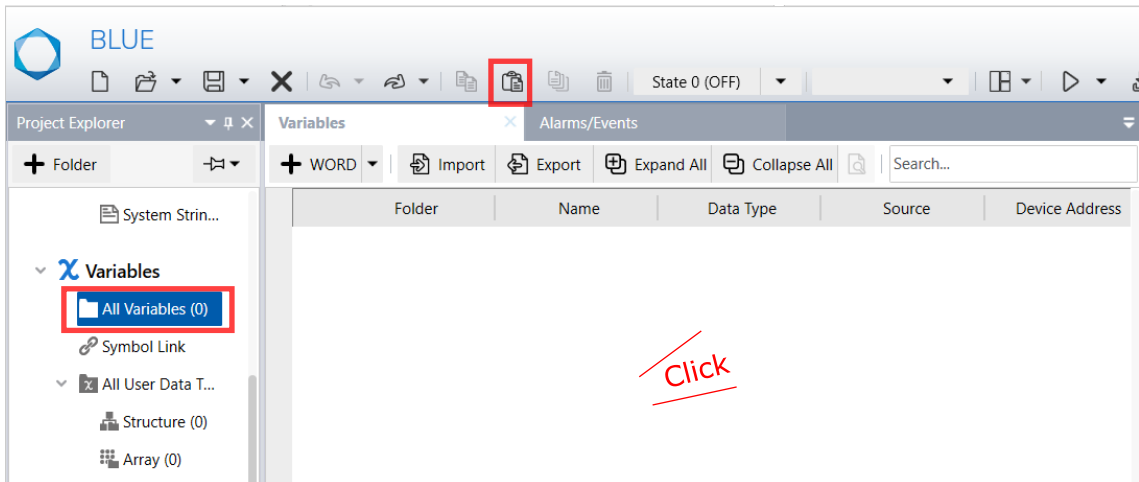


Note: You can skip this step, if Content ID of copied content
(ContentDisplay_GPC_Dialog01) is same as downloaded project file.

- Open downloaded project file and select “All variables”. Select all the displayed variables and click the copy icon from global Toolbar.

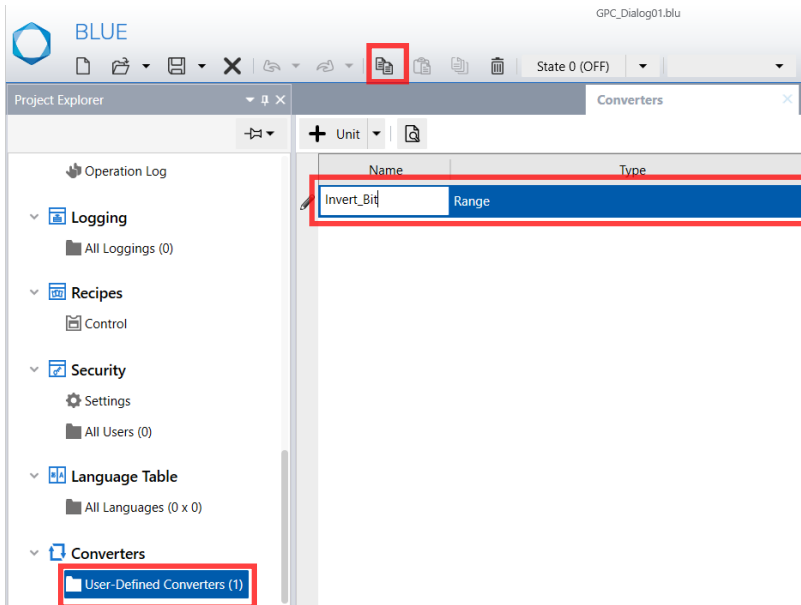


- Open your project file and select “All variables”. Click on the variable screen and click paste icon from the global Toolbar.

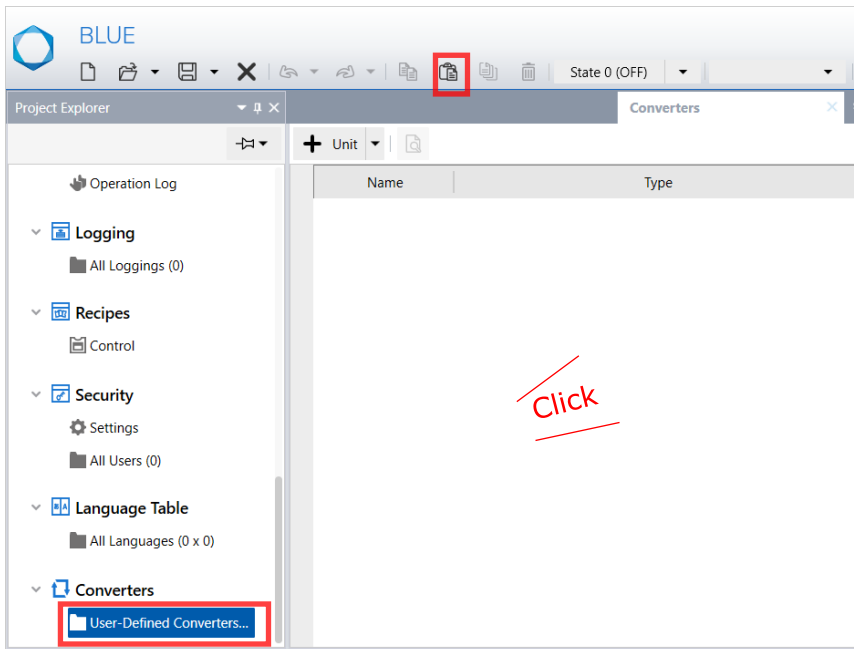


Note: You can also create your own variables to bind with Dialog. For more details, refer [How to change Dialog Variables](#).

11. Open the downloaded project file, select “User-Defined Converters”. Select the displayed converter and click the copy icon from the global Toolbar.

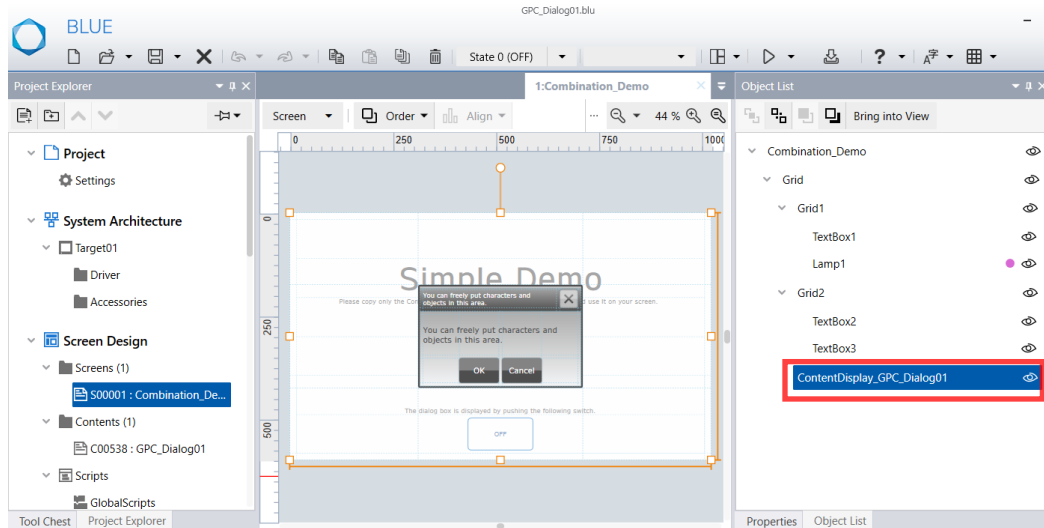


12. Open your project file, select “User-Defined Converters”. Click on the Converter screen and click paste icon from the global Toolbar.

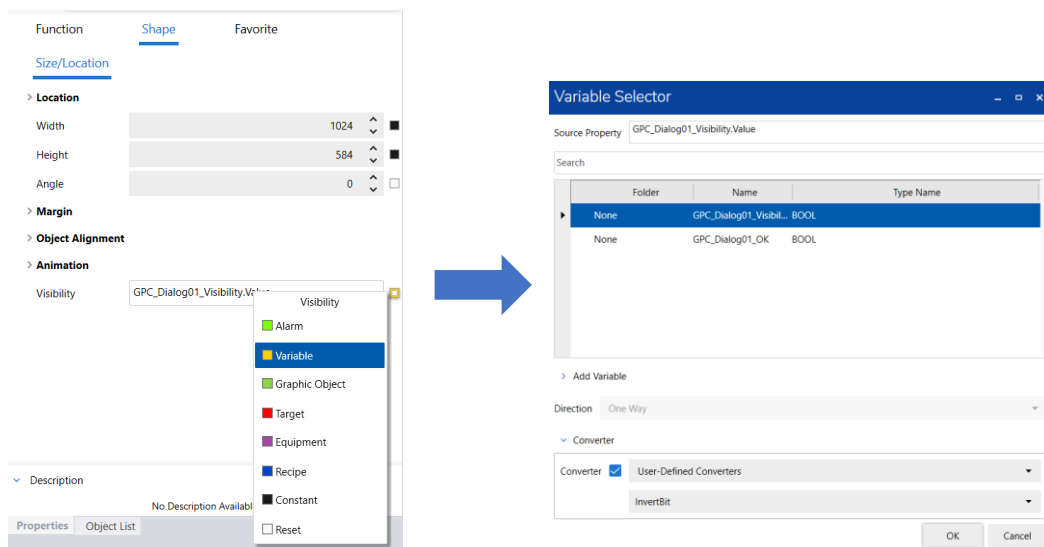


How to change Dialog Variables

1. In screen, select the ContentDisplay_GPC_Dialog01.

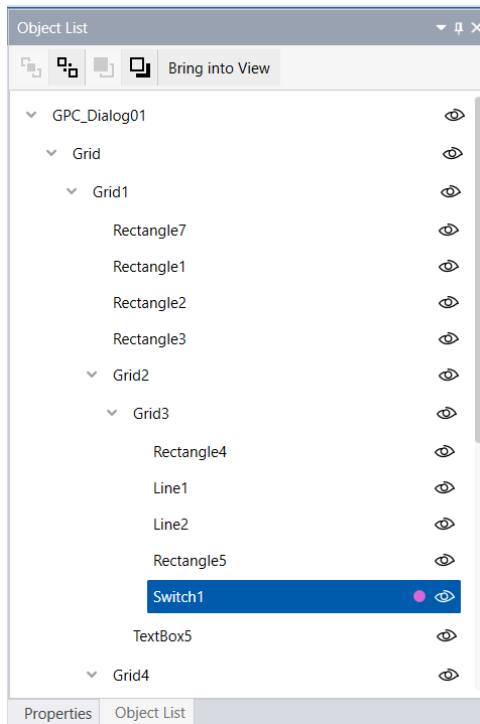


2. In Properties tab, select **Shape > Size/Location > Visibility** and bind the desired variable from variable selector.

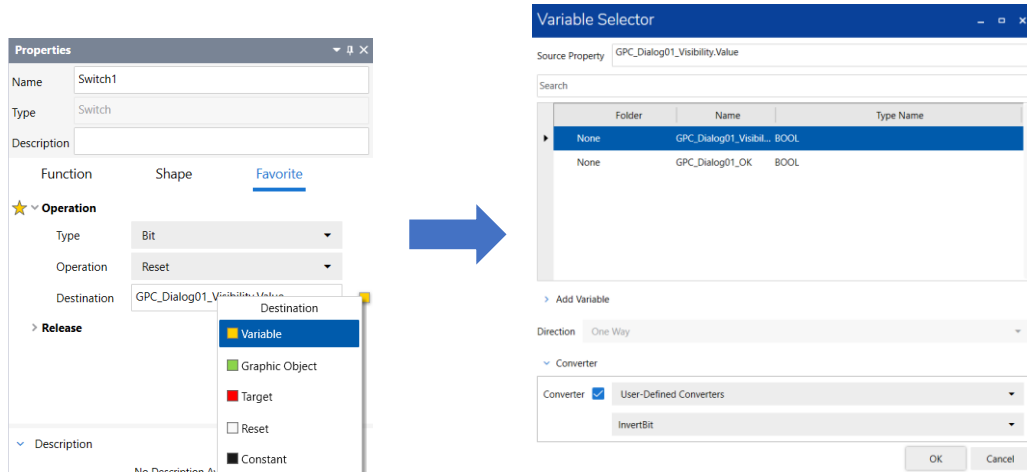


Note: The variable used here will be used to control visibility of the Dialog.

3. Select the content (GPC_Dialog01). In Object List, select Switch1



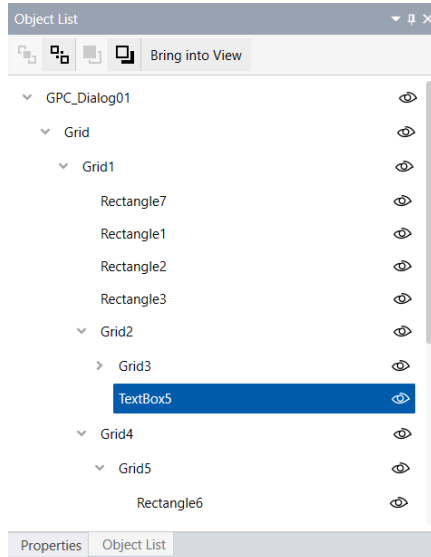
4. In Properties tab, select **Function > Touch > Destination** and bind the same variable used above from variable selector.



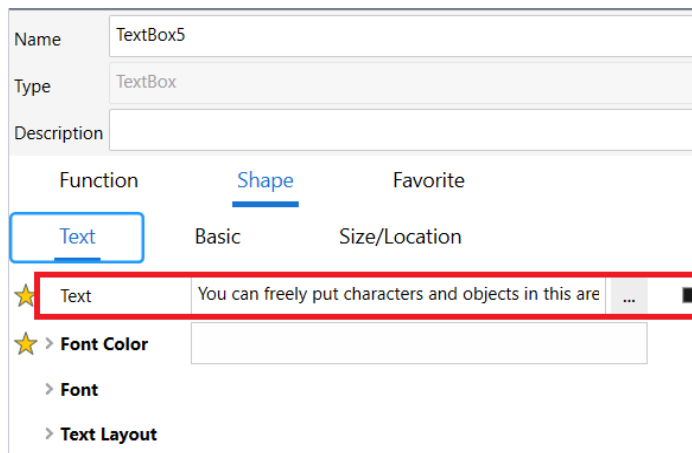
5. Repeat step 3 & 4 for Switch3
6. Repeat step 3 & 4 for Switch2 with another variable.
Note: The variable used here will be set to momentary ON (on click in Runtime), to execute desired OK condition.

How to change Dialog Text

1. Select the content (GPC_Dialog01). In Object List, select TextBox5.



2. In Properties tab, Select **Shape > Text > Text** and edit the desired text.



3. Repeat above step for TextBox6 with the desired text.