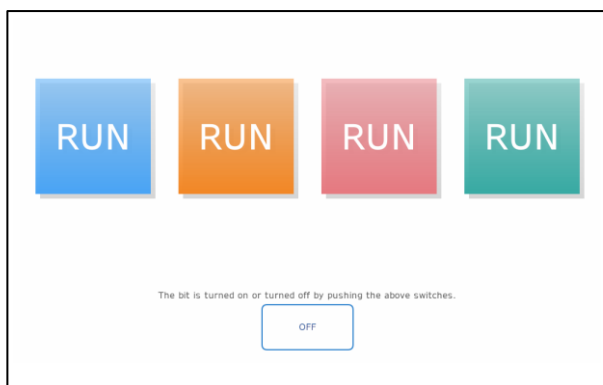


Sample Templates Document: GPS_PushButton02.blu



You agree not to reproduce, other than for your own personal, noncommercial use, all or part of this document on any medium whatsoever without permission of Schneider Electric, given in writing. You also agree not to establish any hypertext links to this document or its content.

Schneider Electric does not grant any right or license for the personal and noncommercial use of the document or its content, except for a non-exclusive license to consult it on an "as is" basis, at your own risk. All other rights are reserved.

All pertinent state, regional, and local safety regulations must be observed when installing and using this product. For reasons of safety and to help ensure compliance with documented system data, only the manufacturer should perform repairs to components.

When devices are used for applications with technical safety requirements, the relevant instructions must be followed.

Failure to use Schneider Electric software or approved software with our hardware products may result in injury, harm, or improper operating results.

Failure to observe this information can result in injury or equipment damage.

Safety Information



Important Information

NOTICE

Read these instructions carefully, and look at the equipment to become familiar with the device before trying to install, operate, service, or maintain it. The following special messages may appear throughout this documentation or on the equipment to warn of potential hazards or to call attention to information that clarifies or simplifies a procedure.



The addition of this symbol to a "Danger" or "Warning" safety label indicates that an electrical hazard exists which will result in personal injury if the instructions are not followed.



This is the safety alert symbol. It is used to alert you to potential personal injury hazards. Obey all safety messages that follow this symbol to avoid possible injury or death.

DANGER

DANGER indicates a hazardous situation which, if not avoided, **will result in** death or serious injury.

WARNING

WARNING indicates a hazardous situation which, if not avoided, **could result in** death or serious injury.

CAUTION

CAUTION indicates a hazardous situation which, if not avoided, **could result in** minor or moderate injury.

NOTICE

NOTICE is used to address practices not related to physical injury.

PLEASE NOTE

Electrical equipment should be installed, operated, serviced, and maintained only by qualified personnel. No responsibility is assumed by Schneider Electric for any consequences arising out of the use of this material.

A qualified person is one who has skills and knowledge related to the construction and operation of electrical equipment and its installation, and has received safety training to recognize and avoid the hazards involved.

About the Book



At a Glance

Document Scope

This manual describes how to use this product.

Validity Note

This documentation is valid for this product.

The technical characteristics of the device(s) described in this manual also appear online at <http://www.pro-face.com>.

The characteristics presented in the present document should be the same as those that appear online. In line with our policy of constant improvement we may revise content over time to improve clarity and accuracy. In the event that you see a difference between the document and online information, use the online information as your reference.

Registered Trademarks

Microsoft and Windows are registered trademarks of Microsoft Corporation in the United States and/or other countries.

Product names used in this manual may be the registered trademarks owned by the respective proprietors.

Related Documents

You can download the manuals related to this product, such as the software manual, from our support site at <http://www.pro-face.com/trans/en/manual/1001.html>.

Product Related Information

If the equipment is used in a manner not specified by the manufacturer, the protection provided by the equipment may be impaired.

In the event this product does not run properly due to whatever reason, it may be difficult or impossible to identify a function. Functions that may present a hazard if not immediately executed, such as a fuel shut-off, must be provided independently of this product. The machine's control system design must take into account the operator being unable to control the machine or making mistakes in the control of the machine.

WARNING

UNINTENDED EQUIPMENT OPERATION

The application of this product requires expertise in the design and programming of control systems. Only persons with such expertise should be allowed to program, install, alter, and apply this product.

- Follow all local and national safety standards.

Failure to follow these instructions can result in death, serious injury, or equipment damage.

For additional information, refer to NEMA ICS 1.1 (latest edition), "Safety Guidelines for the Application, Installation, and Maintenance of Solid State Control" and to NEMA ICS 7.1 (latest edition), "Safety Standards for Construction and Guide for Selection, Installation and Operation of Adjustable-Speed Drive Systems" or their equivalent governing your particular location.

Table of Content

Safety Information	3
About the Book	4
Template Overview	6
Project structure	6
Run Time Behavior	7
How to copy the objects to your project file	8
How to change Push Button variable	11
How to Resize Push Button	11
How to Duplicate Grid Parts	12

Target: ST-6500WAD

Driver: None

BLUE version 3.2 SP1 SP1 or later

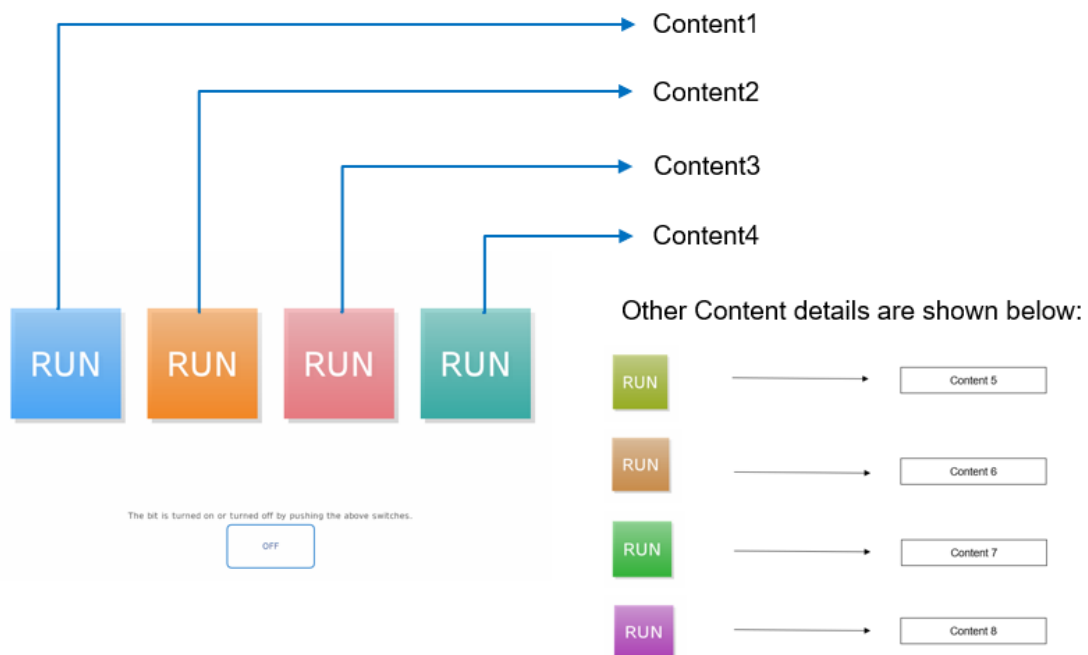
Template Overview

This template has a square shaped 'RUN' push button in 8 different colours.

Project structure

- On Simple_Demo, 4 content displays are placed. Different contents are called in Simple_Demo screen.

Screen			
Simple_Demo	ContentsDisplay1 (Contents ID: 1)	GPS_PushButton02_Color1	Blue
	ContentsDisplay2 (Contents ID: 2)	GPS_PushButton02_Color2	Orange
	ContentsDisplay3 (Contents ID : 3)	GPS_PushButton02_Color3	Red
	ContentsDisplay4 (Contents ID : 4)	GPS_PushButton02_Color4	Turquoise
	(Contents ID : 5)	GPS_PushButton02_Color5	Lime Yellow
	(Contents ID : 6)	GPS_PushButton02_Color6	Brown
	(Contents ID : 7)	GPS_PushButton02_Color7	Green
	(Contents ID : 8)	GPS_PushButton02_Color8	Purple



Run Time Behavior

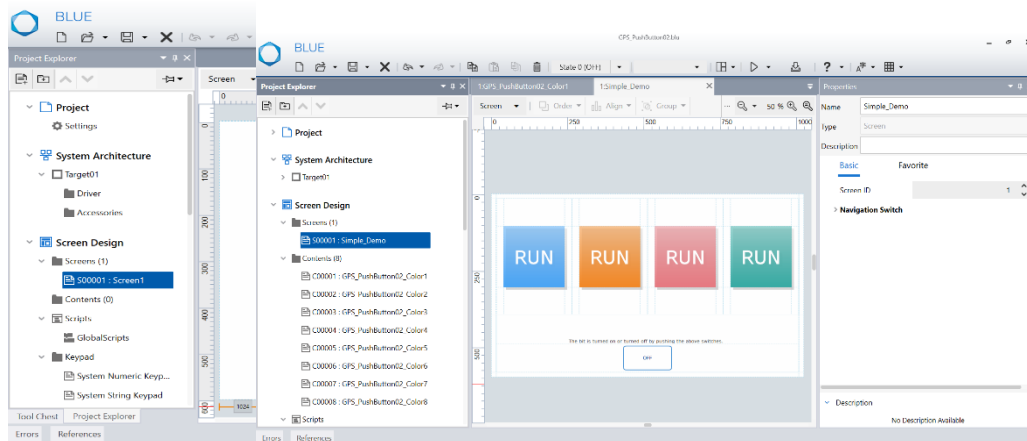
Runtime/Simulation of this template displays 4 square shaped push buttons.

Click the Push button to toggle between the OFF and ON state.


The Status of the bit can be viewed in a lamp placed at the bottom of the screen.

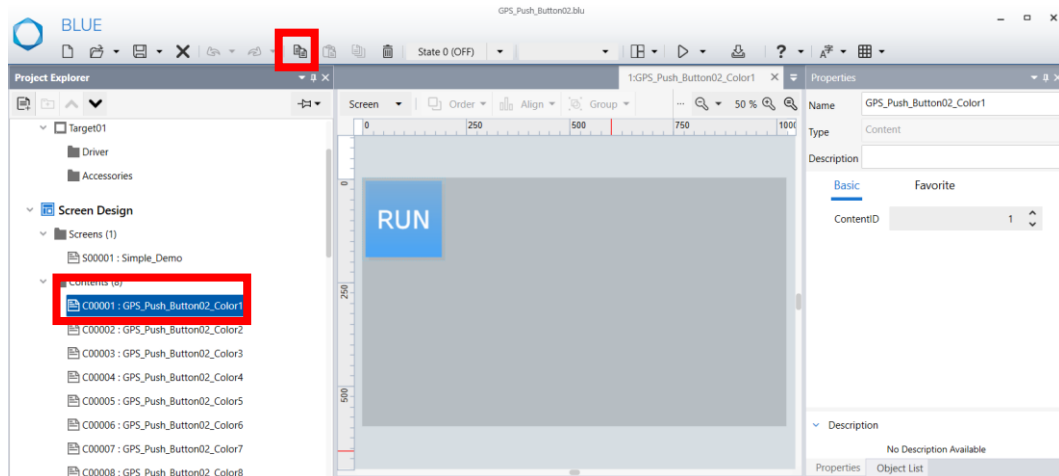
How to copy the objects to your project file

1. Open your project file and downloaded project file simultaneously.




2. Open the downloaded project file.

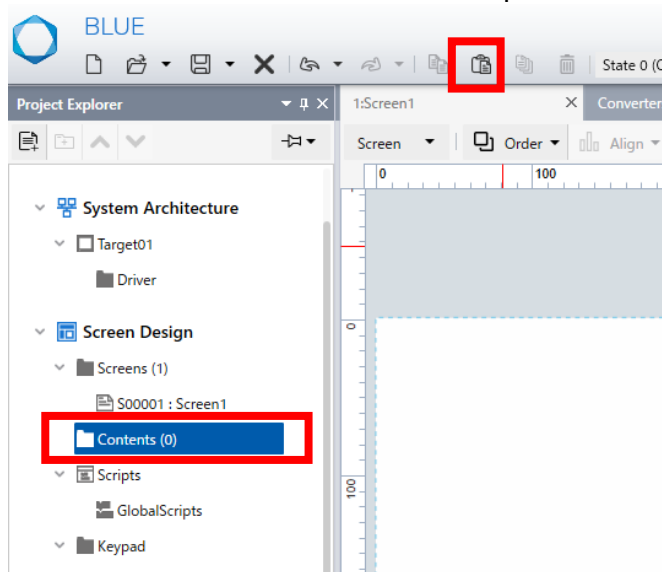
Click the desired Content from “Contents” and copy the content using  copy icon in global Toolbar.



Note: You can copy any of the contents as per your Color requirement.

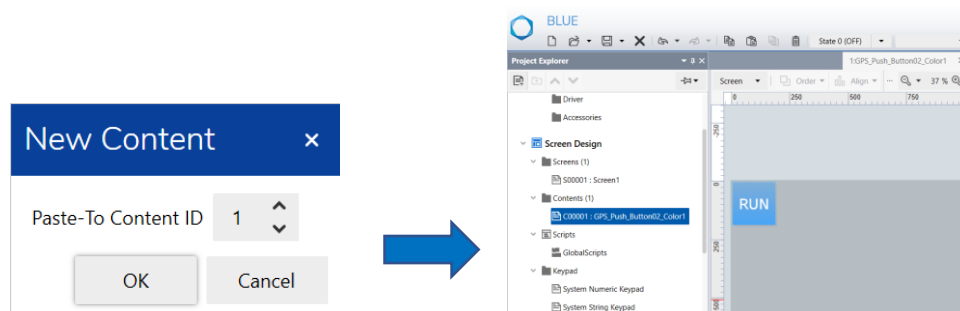
- Open your project file.

Click “Contents” and then click on the paste  icon from the global Toolbar.

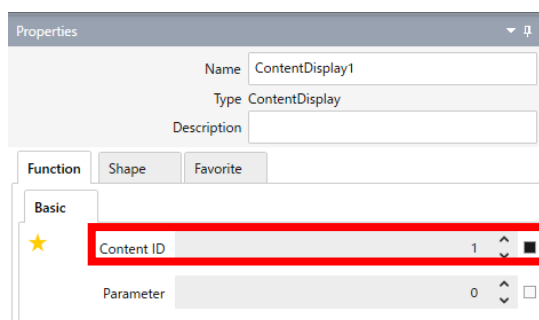


- Select desired content ID and click “OK”.

Result: Copied content is successfully pasted in your project.

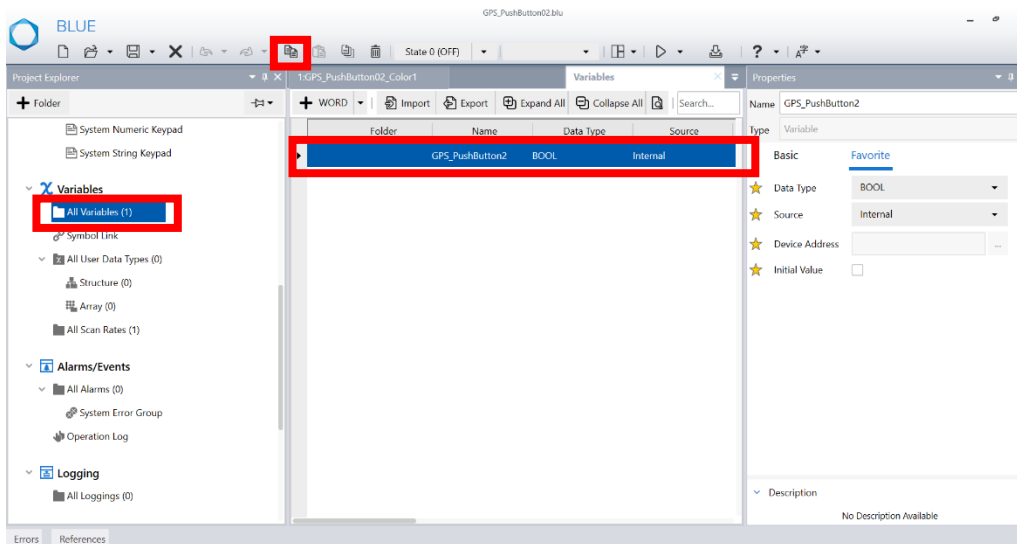


- Select “Screen” and place “Content Display” Layout object from “Tool Chest”. In “Properties” tab, select the “Content ID” of the pasted content.

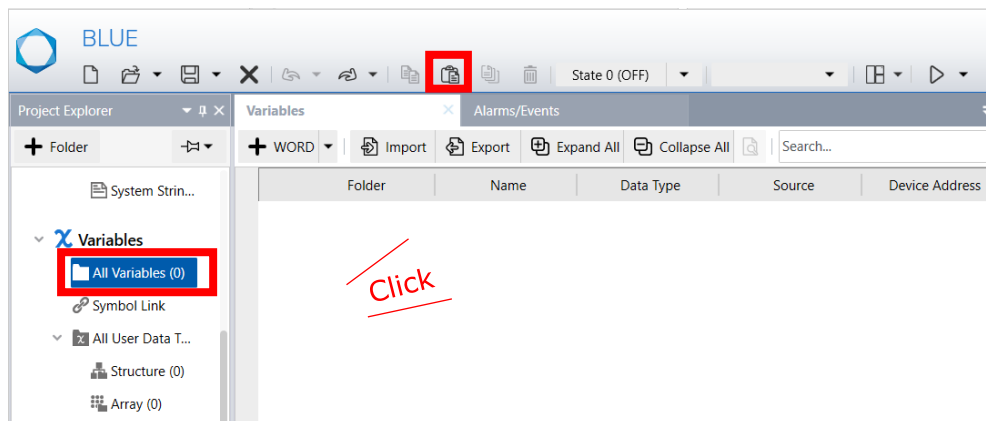


- You can resize the push button. For more details, refer [How to Resize Grid Parts](#)

- Open the downloaded project file and select “All variables”. Select the displayed variables and click the copy icon from global Toolbar.



- Open your project file and select “All Variables”. Click an existing variable or a blank Variable and click paste icon in global toolbar.

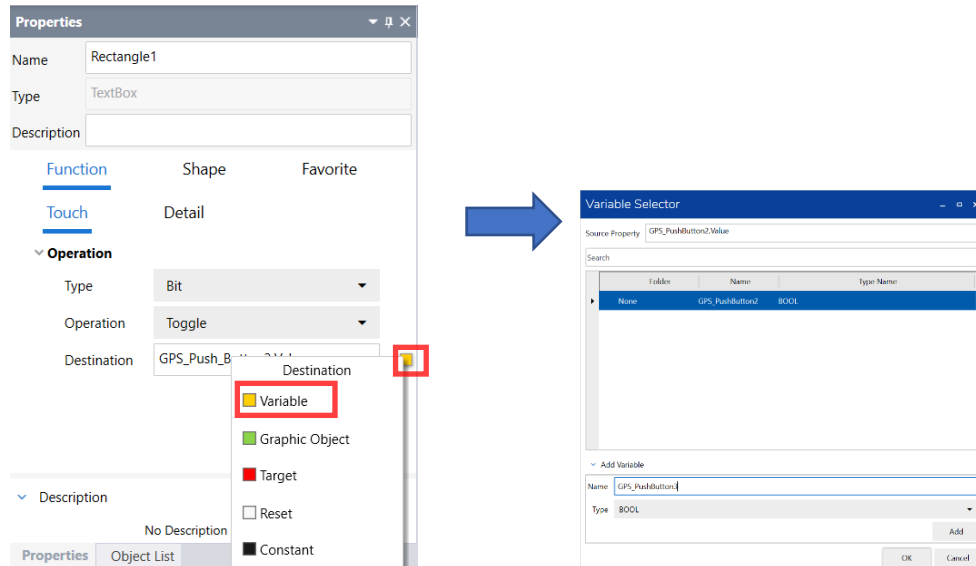


The copied variable is pasted in your project.

Note: You can also create your own variables to toggle the push button. For more details, refer [How to change Push button variable](#)

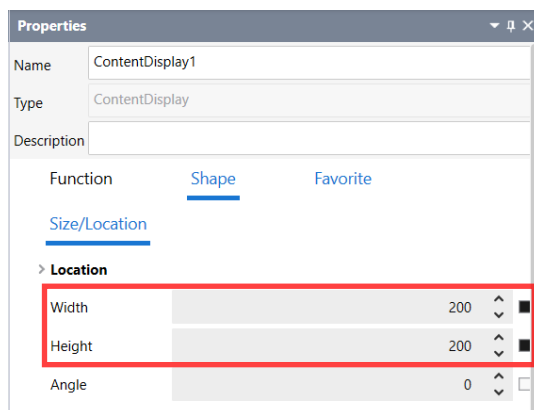
How to change Push Button variable

1. Open your project, in the content screen, select Rectangle1.
2. In Properties tab, select Function > Touch > Operation > Destination and bind the desired variable from variable selector.



How to Resize Push Button

1. Select Screen (where push button is placed) and then select the content display.
2. In properties tab, change the value of Width and Height.

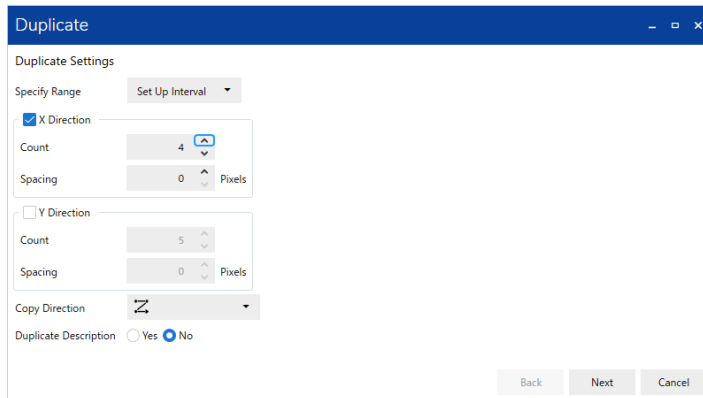


Note:

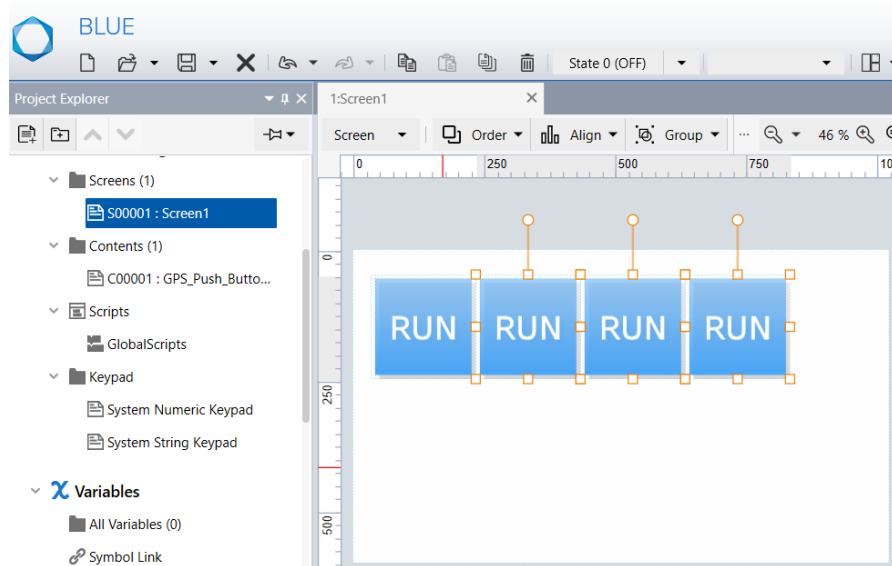
1. Set same value of width and height to maintain the shape.
2. Modify the font size of text in content to fit as per the new size change.

How to Duplicate Grid Parts

1. In screen, select the content display and click the duplicate icon.
Result: Duplicate window appears
2. Select all desired fields (direction to copy, the number, increment source property) and click "Duplicate".



Result: The Grid Parts are duplicated.



Note:

1. Duplicate feature can be used, only if common converter is used. If you want to use the individual converter, copy the content, variable and converter from downloaded project again and rename it.
2. You can modify the desired color for the push button, by changing the respective content ID.