

# Windows Upgrade USB Installation Guide

This document describes how to upgrade the Windows operating system using the upgrade USB.

## Applicable Products

- PS6000 Series Advanced/Standard Box (i7, i5, Celeron, i3)
- PS6000 Series Basic Box (Atom 4 core only)
- Harmony P6 Advanced/Standard Box (i7, i5, Celeron, i3)
- Harmony P6 Basic Box (Atom 4 cores)

## Upgrade USB Part Numbers

- HMIYP6RUSW1124P: for Windows 11 IoT Enterprise 2024 LTSC on Advanced/Standard Box (i7, i5, Celeron, i3)
- HMIYP6RUSW1021P: for Windows 10 IoT Enterprise 2021 LTSC on Advanced/Standard Box (i7, i5, Celeron, i3)
- HMIYP6RUSW1124S: for Windows 11 IoT Enterprise 2024 LTSC on Basic Box (Atom 4 cores)

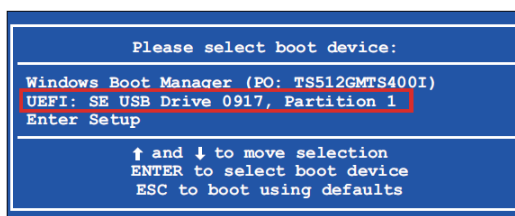
## License Label

**IMPORTANT:** Each upgrade USB comes with a license label for the upgraded operating system. Once the upgraded operating system is installed, the license of the previous operating system will no longer be valid. Keep the license label of the upgraded operating system in a secure location and do not lose it.

## How to Upgrade

1. Insert the upgrade USB into the product.
2. Turn on the product.
3. While the boot screen is displayed, press the [F7] key.
4. Enter the password (default password: Pw#12345).
5. Select the upgrade USB.

**NOTE:** For the upgrade USB, the name starts with "UEFI". (The name below is for reference only.)

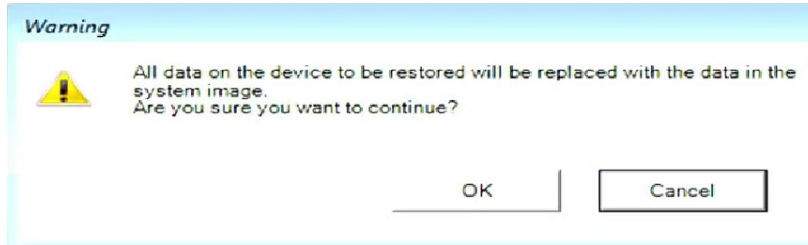


6. If the BIOS version is older than required for the upgrade USB, a message to update the BIOS appears. The latest BIOS for the product is available at the following URL.

Pro-face: <https://www.pro-face.com/trans/en/manual/1085.html>

Schneider Electric: [www.se.com/ww/en/download](http://www.se.com/ww/en/download)

7. The following message appears. Select **OK**.



8. The operating system installation starts automatically.
9. Select **Restart** or **Shut down**.

Electrical equipment should be installed, operated, serviced, and maintained only by qualified personnel. No responsibility is assumed by Schneider Electric for any consequences arising out of the use of this material.

The information in this document is subject to change without notice.  
Copyright © 2026.05 Schneider Electric. All Rights Reserved.  
HMIYP6RUSW1011-IG.00