

Semi-con Template Parts

User Guide_EN_V1

Document copyright policy:

You agree not to reproduce, other than for your own personal, noncommercial use, all or part of this document on any medium whatsoever without permission of Schneider Electric, given in writing. You also agree not to establish any hypertext links to this document or its content.

Schneider Electric does not grant any right or license for the personal and noncommercial use of the document or its content, except for a non-exclusive license to consult it on an "as is" basis, at your own risk. All other rights are reserved.

All pertinent state, regional, and local safety regulations must be observed when installing and using this product. For reasons of safety and to help ensure compliance with documented system data, only the manufacturer should perform repairs to components.

When devices are used for applications with technical safety requirements, the relevant instructions must be followed.

Failure to use Schneider Electric software or approved software with our hardware products may result in injury, harm, or improper operating results.

Failure to observe this information can result in injury or equipment damage.

Safety Information



Important Information

NOTICE

Read these instructions carefully, and look at the equipment to become familiar with the device before trying to install, operate, service, or maintain it. The following special messages may appear throughout this documentation or on the equipment to warn of potential hazards or to call attention to information that clarifies or simplifies a procedure.



The addition of this symbol to a “Danger” or “Warning” safety label indicates that an electrical hazard exists which will result in personal injury if the instructions are not followed.



This is the safety alert symbol. It is used to alert you to potential personal injury hazards. Obey all safety messages that follow this symbol to avoid possible injury or death.

DANGER

DANGER indicates a hazardous situation which, if not avoided, **will result in** death or serious injury.

WARNING

WARNING indicates a hazardous situation which, if not avoided, **could result in** death or serious injury.

CAUTION

CAUTION indicates a hazardous situation which, if not avoided, **could result in** minor or moderate injury.

NOTICE

NOTICE is used to address practices not related to physical injury.

PLEASE NOTE

Electrical equipment should be installed, operated, serviced, and maintained only by qualified personnel. No responsibility is assumed by Schneider Electric for any consequences arising out of the use of this material.

A qualified person is one who has skills and knowledge related to the construction and operation of electrical equipment and its installation, and has received safety training to recognize and avoid the hazards involved.

About the Book



At a Glance

Document Scope

This manual describes how to use this product.

Validity Note

This documentation is valid for this product.

The technical characteristics of the device(s) described in this manual also appear online at

<http://www.pro-face.com>.

The characteristics presented in the present document should be the same as those that appear online. In line with our policy of constant improvement we may revise content over time to improve clarity and accuracy. In the event that you see a difference between the document and online information, use the online information as your reference.

Registered Trademarks

Microsoft and Windows are registered trademarks of Microsoft Corporation in the United States and/or other countries.

Product names used in this manual may be the registered trademarks owned by the respective proprietors.

Related Documents

You can download the manuals related to this product, such as the software manual, from our support site at <http://www.pro-face.com/trans/en/manual/1001.html>.

Product Related Information

If the equipment is used in a manner not specified by the manufacturer, the protection provided by the equipment may be impaired.

In the event this product does not run properly due to whatever reason, it may be difficult or impossible to identify a function. Functions that may present a hazard if not immediately executed, such as a fuel shut-off, must be provided independently of this product. The machine's control system design must take into account the operator being unable to control the machine or making mistakes in the control of the machine.

⚠ WARNING
UNINTENDED EQUIPMENT OPERATION The application of this product requires expertise in the design and programming of control systems. Only persons with such expertise should be allowed to program, install, alter, and apply this product. <ul style="list-style-type: none">● Follow all local and national safety standards. Failure to follow these instructions can result in death, serious injury, or equipment damage.

For additional information, refer to NEMA ICS 1.1 (latest edition), "Safety Guidelines for the Application, Installation, and Maintenance of Solid State Control" and to NEMA ICS 7.1 (latest edition), "Safety Standards for Construction and Guide for Selection, Installation and Operation of Adjustable-Speed Drive Systems" or their equivalent governing your particular location.

Update History

Date	Revision	Comment
2025/9/11	1	Newly created

CONTENTS

Safety Information	2
About the Book	3
Preface	6
About parts.....	7
Procedures to use a new parts.....	16

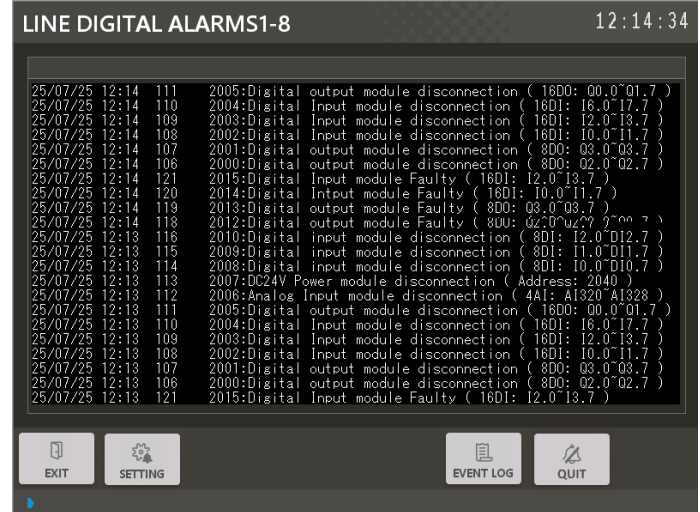
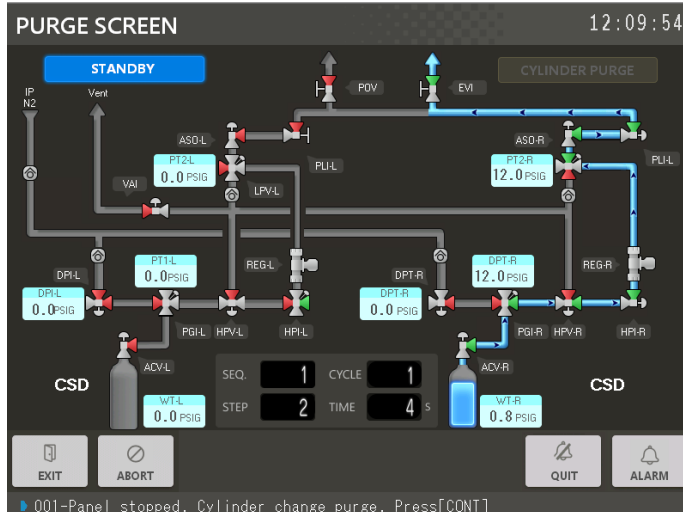
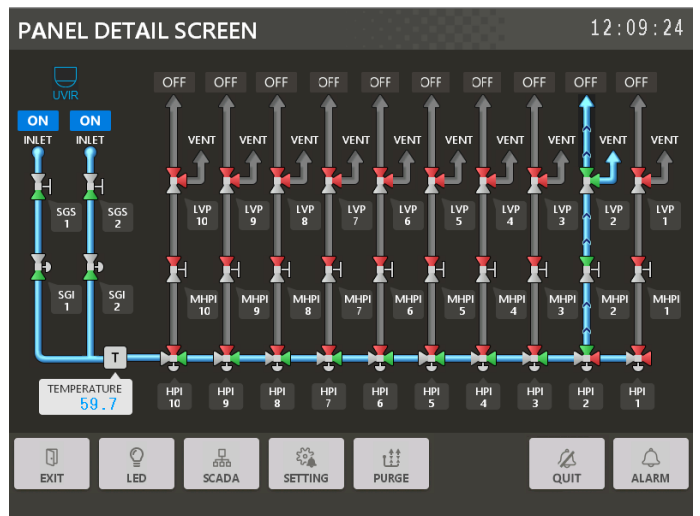
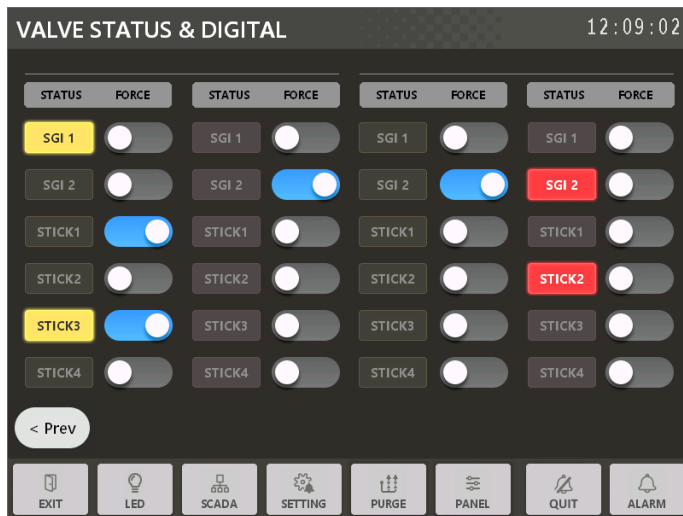
PREFACE

This document explains how to install and use Semi-con Template parts with functions such as switches/lamps, Valve and pipe on GP-Pro EX.

What is Semi-con Template parts?

Semi-con template parts are the parts used in the Semi-con Template, which help customers reduce their engineering time to create their screen with good-looking graphics.

*Please contact your local sales office directly.



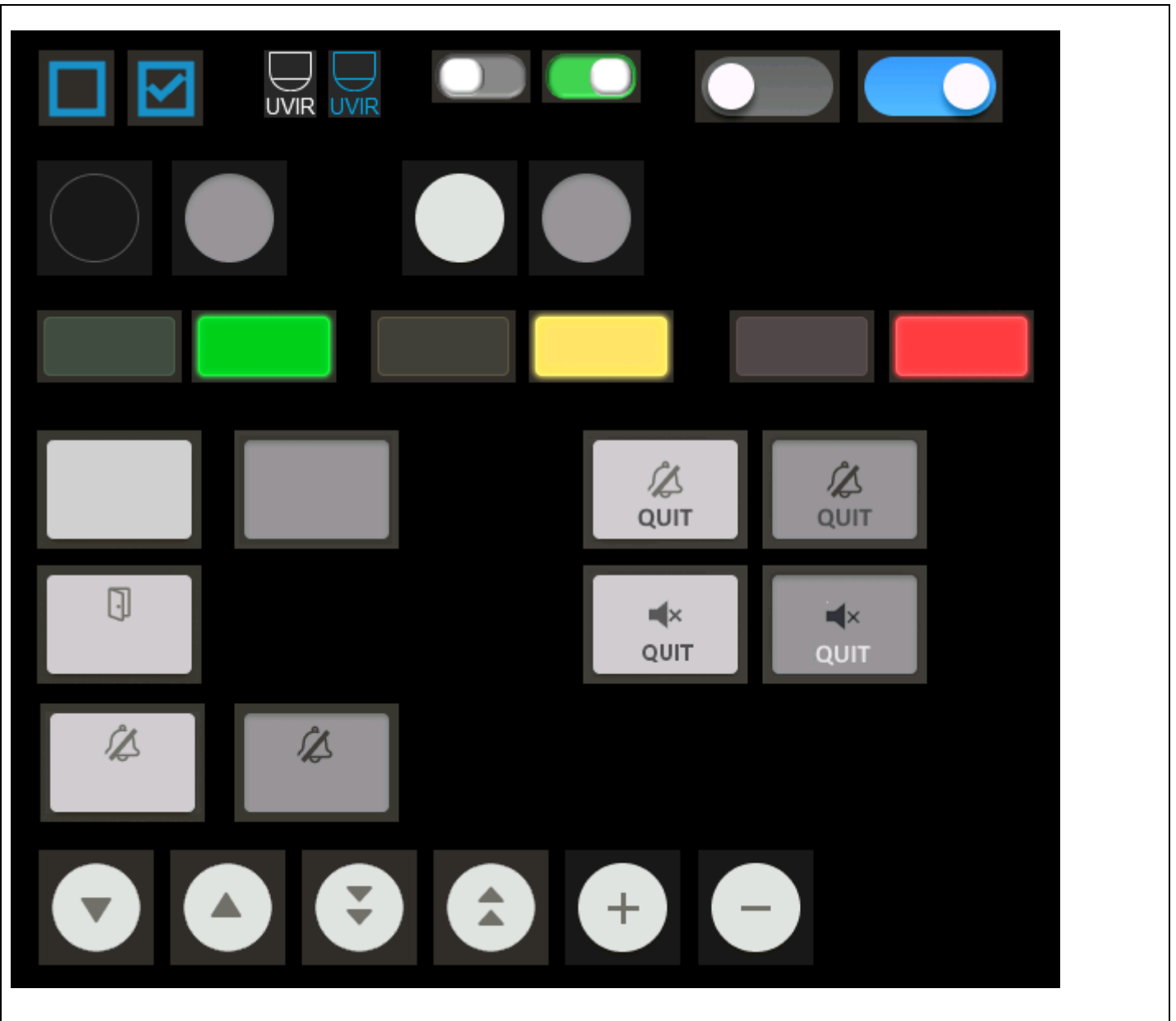
ABOUT PARTS

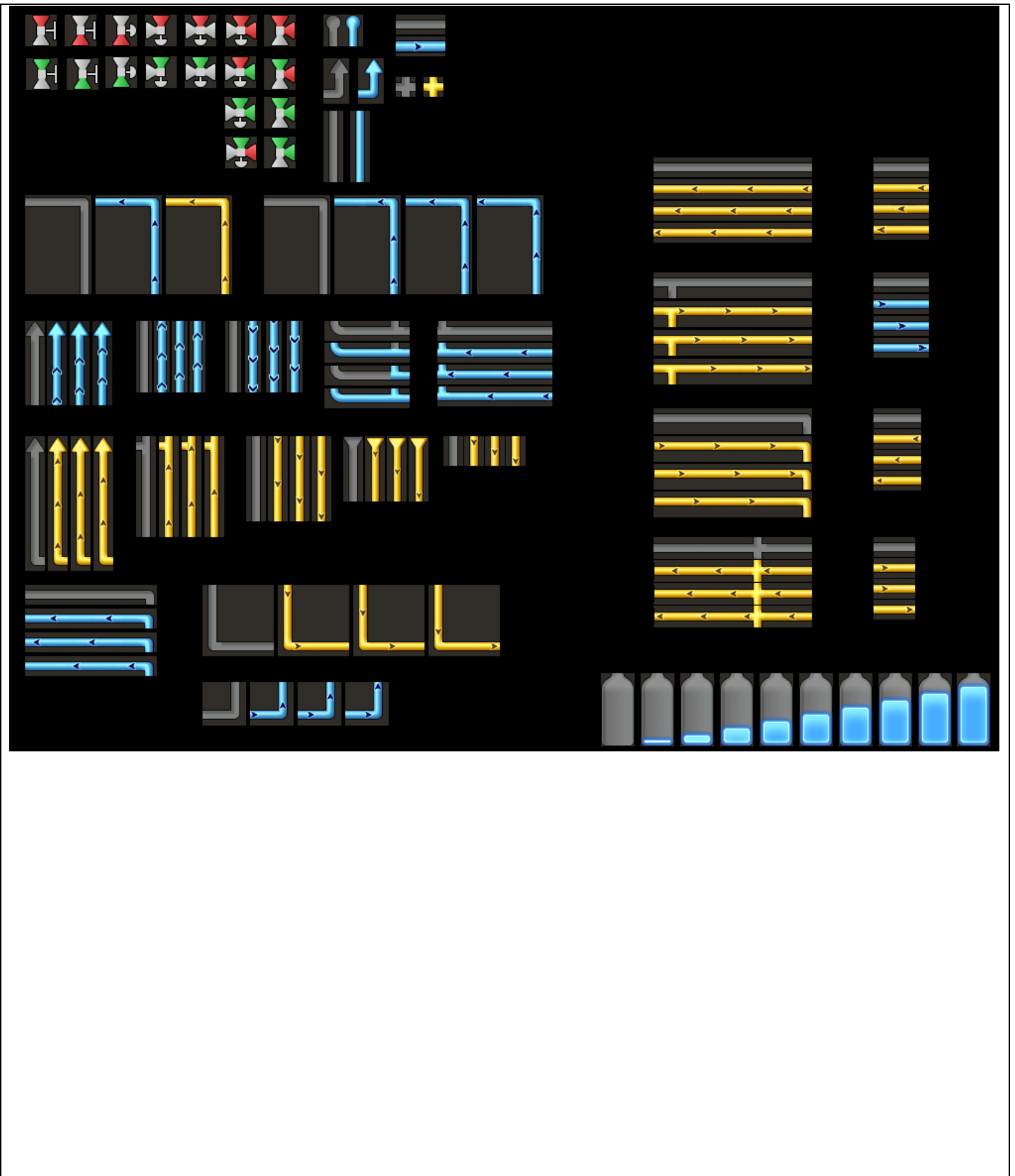
There is a PDX files. (Please refer to the “Parts images” chapter for the parts images in PDX file.)

➤ I_SEMI_Template.pdx

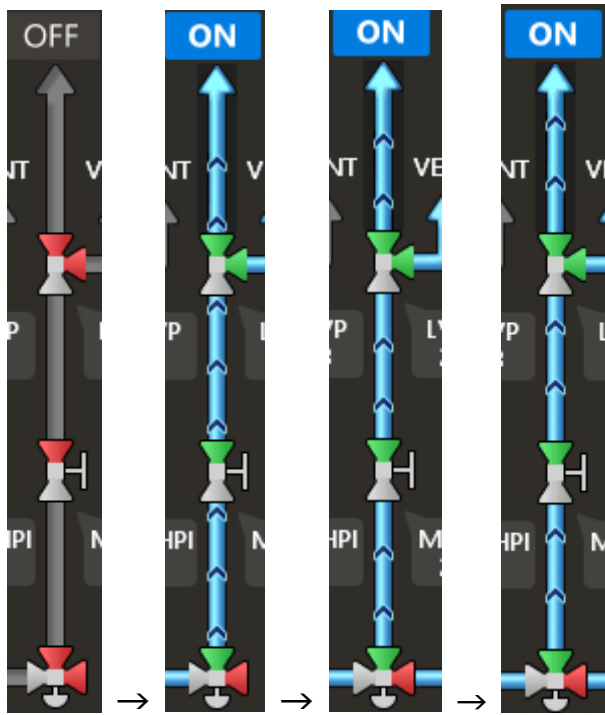
These Semi-con Template parts have a background color of RGB (48:44:40)





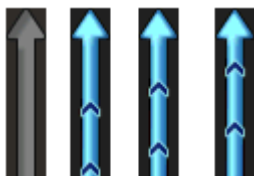
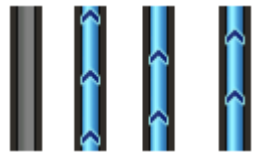


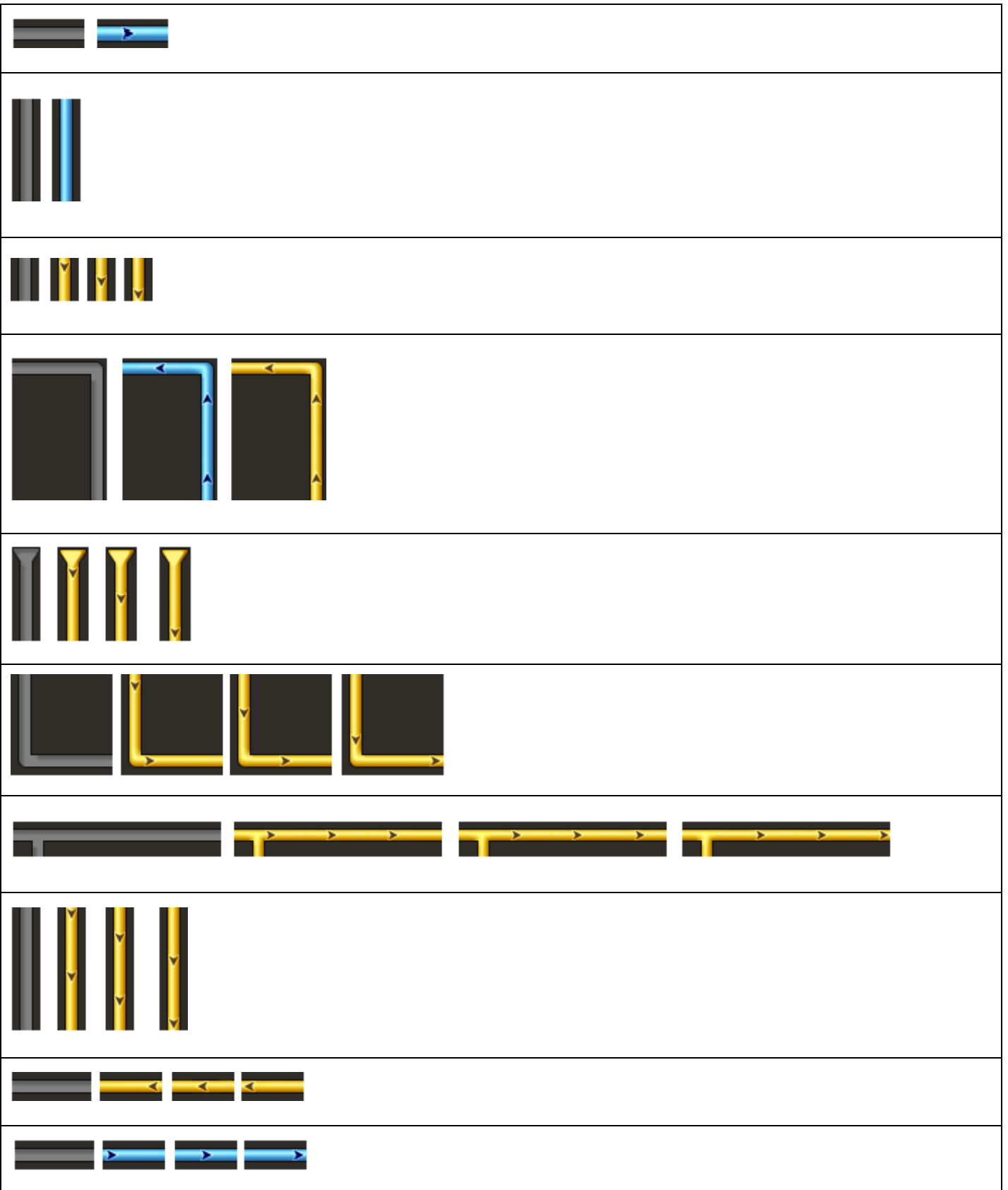
Pipe parts can be used to express the flow of the air/water.

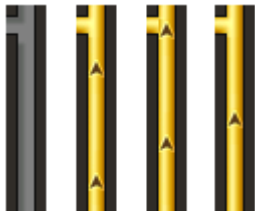










Parts with State change


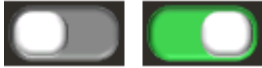
















PROCEDURES TO USE A NEW PARTS

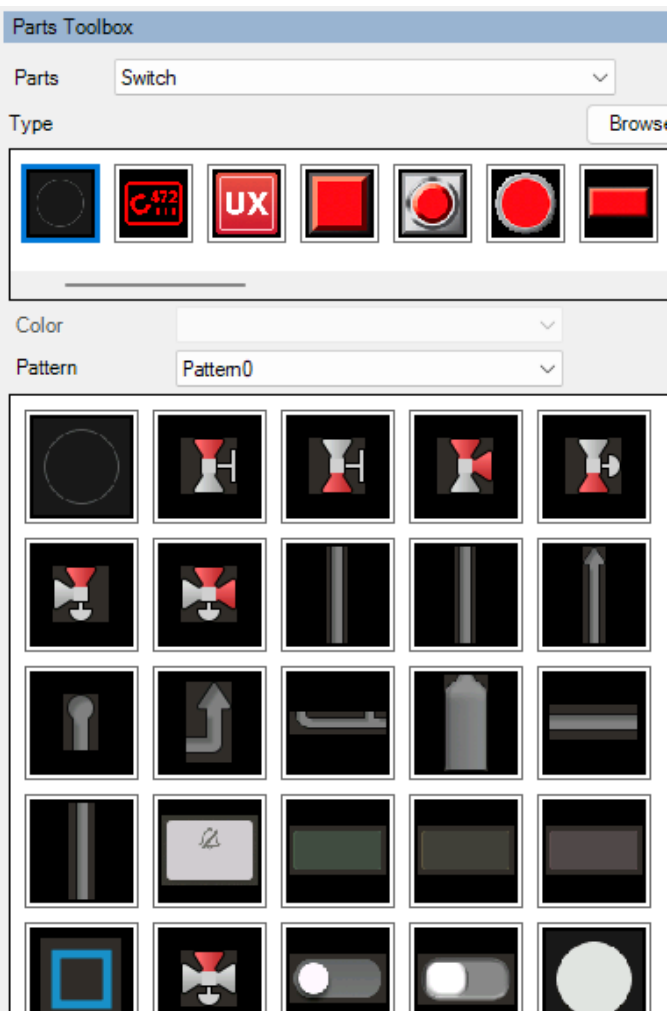
By saving the downloaded PDX file in the folder below, you can always use the parts added from the [Parts Toolbox].

GP-Pro EX Ver. 2.7 or later	<p><Windows7 ~ Windows11></p> <p>C:¥ProgramData¥Pro-face¥GP-Pro EX ***¥pdx</p> <p><Windows XP></p> <p>C:¥Documents and Settings¥All Users¥Application Data¥Pro-face¥GP-Pro EX ***¥pdx</p>
GP-Pro EX Ver. 2.6x	<p><Windows XP></p> <p>C:¥Documents and Settings¥All Users¥Application Data¥Pro-face¥GP-Pro EX ***¥pdx</p>
GP-Pro EX Ver. 2.2x~2.5x	<p><Windows XP></p> <p>C:¥Documents and Settings¥All Users¥Documents¥Pro-face¥GP-Pro EX ***¥pdx</p>

GP-Pro EX Ver. 1.0x~2.1x	<Windows XP> C:¥Program Files¥Pro-face¥GP-Pro EX ***¥pdx
--------------------------	---

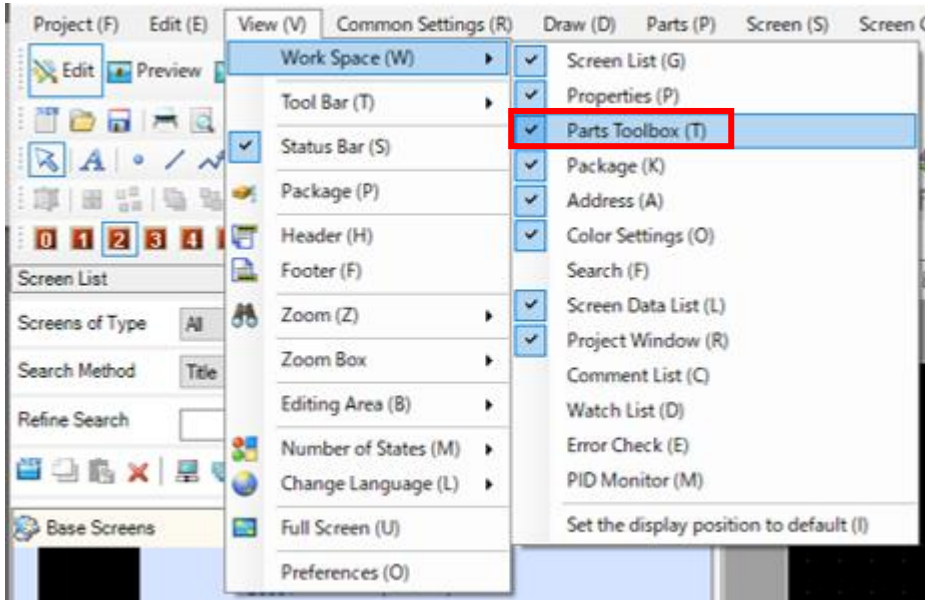
MEMO

- *** is substitution of the version of the screen editor.
- Make sure to close GP-Pro EX before saving the PDX file to the specified folder.
- The parts will be displayed in the Parts Toolbox by default even after the next startup.

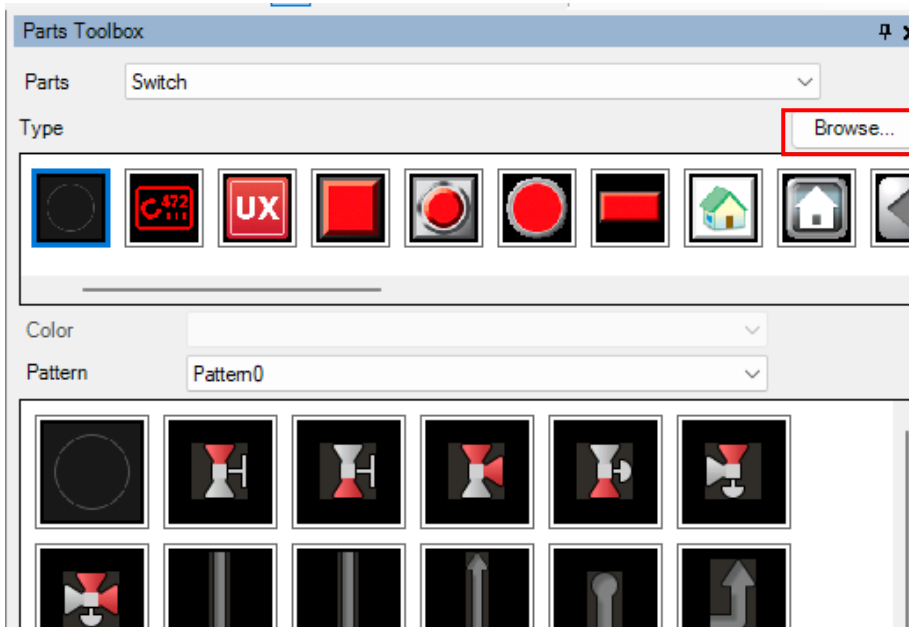


Also, you can select and use the specified PDX file from [browse...] in the parts toolbox.

1. From menu [View (V)], select [Work Space (W)] ⇒ [Parts Toolbox (T)].



2. Open the [Parts Toolbox] added in the Work Space and select the specified PDX file from [browse...] to display the parts.



MEMO

- In this case, once you close the project, you will need to read the PDX file from [Browse...] again the next time you start it, so we recommend saving it to the specified folder mentioned above.