

# GP-Pro EX Connection Key

## User Guide

EX-CONKEY-MM01-EN.00

7/2025



# Legal Information

The information provided in this document contains general descriptions, technical characteristics and/or recommendations related to products/solutions.

This document is not intended as a substitute for a detailed study or operational and site-specific development or schematic plan. It is not to be used for determining suitability or reliability of the products/solutions for specific user applications. It is the duty of any such user to perform or have any professional expert of its choice (integrator, specifier or the like) perform the appropriate and comprehensive risk analysis, evaluation and testing of the products/solutions with respect to the relevant specific application or use thereof.

The Pro-face brand and any trademarks of Schneider Electric SE and its subsidiaries referred to in this document are the property of Schneider Electric SE or its subsidiaries. All other brands may be trademarks of their respective owner.

This document and its content are protected under applicable copyright laws and provided for informative use only. No part of this document may be reproduced or transmitted in any form or by any means (electronic, mechanical, photocopying, recording, or otherwise), for any purpose, without the prior written permission of Schneider Electric.

Schneider Electric does not grant any right or license for commercial use of the document or its content, except for a non-exclusive and personal license to consult it on an "as is" basis.

Schneider Electric reserves the right to make changes or updates with respect to or in the content of this document or the format thereof, at any time without notice.

**To the extent permitted by applicable law, no responsibility or liability is assumed by Schneider Electric and its subsidiaries for any errors or omissions in the informational content of this document, as well as any non-intended use or misuse of the content thereof.**



# Contents

Safety Precautions .....	4
Important Information .....	4
About the Document.....	5
Document Scope.....	5
Validity Note .....	5
Product Related Information .....	5
General Cybersecurity Information .....	6
Product Related Cybersecurity Information .....	6
Available Languages of the Document .....	6
Related Documents.....	6
Information on Non-Inclusive or Insensitive Terminology .....	6
Trademarks .....	7
Cybersecurity .....	8
Cybersecurity Guideline .....	8
Overview .....	9
Connection Key .....	9
System Version .....	9
List of Transfer Procedure Combinations.....	11
Procedure 1.....	14
Procedure 2.....	14
Procedure 3.....	14
Procedure 4.....	15
Procedure 5.....	16
Procedure 6.....	17
Procedure 7.....	18
Restrictions.....	21
Troubleshooting.....	22
A screen requesting setting of a connection key is displayed on the display unit even though a connection key is set. ....	22
Transfer is not possible because I forgot the connection key.....	23
The following error message is displayed on the display unit screen: “RAAA181: The connection was interrupted. Connection password is not supported by the unit.” .....	24
Cause .....	25
Correction.....	25
The following error message is displayed on the display unit screen: “RAAA203: Error occurred at system startup. Use the Transfer Tool to run a forced transfer operation.” .....	27
Cause .....	27
Correction.....	27



---

# Safety Precautions

## Important Information

Read these instructions carefully, and look at the equipment to become familiar with the device before trying to install, operate, service, or maintain it. The following special messages may appear throughout this documentation or on the equipment to warn of potential hazards or to call attention to information that clarifies or simplifies a procedure.



The addition of this symbol to a "Danger" or "Warning" safety label indicates that an electrical hazard exists which will result in personal injury if the instructions are not followed.



This is the safety alert symbol. It is used to alert you to potential personal injury hazards. Obey all safety messages that follow this symbol to avoid possible injury or death.

### **DANGER**

**DANGER** indicates a hazardous situation which, if not avoided, will result in death.

### **WARNING**

**WARNING** indicates a potentially hazardous situation which, if not avoided, could result in death or serious injury.

### **CAUTION**

**CAUTION** indicates a potentially hazardous situation which, if not avoided, could result in minor or moderate injury.

### ***NOTICE***

***NOTICE*** is used to address practices not related to physical injury.



---

# About the Document

## Document Scope

When sending a project from GP-Pro EX to the display unit, the handling of connection key setting and authentication at the time of transfer varies depending on the combination of display unit conditions and the GP-Pro EX version.

This manual explains the transfer method, the transfer restrictions related to the connection key, and troubleshooting for each combination.

## Validity Note

This manual was written for the GP-Pro EX connection key.

The characteristics of the products described in this document are intended to match the characteristics that are available on [www.pro-face.com](http://www.pro-face.com). As part of our corporate strategy for constant improvement, we may revise the content over time to enhance clarity and accuracy. If you see a difference between the characteristics in this document and the characteristics on [www.pro-face.com](http://www.pro-face.com), consider [www.pro-face.com](http://www.pro-face.com) to contain the latest information.

## Product Related Information

The following precautions allow you to use it safely. Carefully read this manual and all related manuals to understand the correct operation and features of GP-Pro EX.

### WARNING

#### UNINTENDED EQUIPMENT OPERATION

- Touch panel switches should not be used to make a switch that could result in human injury or equipment damage. Trouble with the display unit, units, and cables which keep the output ON or OFF could result in a serious accident. An output signal that could result in a serious accident must be equipped with a monitoring circuit such as a limiter. Please design the system so that important operation switches are handled by equipment other than the display unit. This will prevent potential accidents as a result of incorrect output or malfunctions.
- Touch panel switches should not be used for a device's Emergency Stop Switch. The Ministry of Health, Labor and Welfare requires all industrial machinery/systems must be equipped with a mechanical, manually operate emergency stop switch. Also, for other kinds of systems, similar mechanical switches must be provided to ensure safe operation of those systems.

**Failure to follow these instructions can result in death, serious injury, or equipment damage.**



## NOTICE

### LOSS OF DATA

- Do not turn off your personal computer's power switch during the execution of a program. The project files could be damaged as a result.
- Do not change the contents of this product's project files using Text Editor software. The project files could be damaged as a result.
- Do not turn off the display unit power or perform reset while using features that change a project file on the display unit. The project files could be damaged as a result.

**Failure to follow these instructions can result in equipment damage.**

## General Cybersecurity Information

In recent years, the growing number of networked machines and production plants has seen a corresponding increase in the potential for cyber threats, such as unauthorized access, data breaches, and operational disruptions. You must, therefore, consider all possible cybersecurity measures to help protect assets and systems against such threats.

To help keep your Pro-face products secure and protected, it is in your best interest to implement the cybersecurity best practices as described in the [Cybersecurity Best Practices](#) document.

Pro-face provides additional information and assistance:

- Visit the [Security Notification](#) page to find security notifications.
- [Contact us](#) to report vulnerabilities and incidents.

## Product Related Cybersecurity Information

Refer to Cybersecurity (Page.8)

## Available Languages of the Document

The document is available in these languages:

- English (EX-CONKEY-MM01-EN)
- Japanese (EX-CONKEY-MM01-JA)

## Related Documents

Title of documentation	Reference number
Cybersecurity Best Practices	Refer to General Cybersecurity Information (Page.6)
HMI/IPC Cybersecurity Guide	<a href="#">PFHMIIPCCS-MM01-EN</a> (ENG) <a href="#">PFHMIIPCCS-MM01-JA</a> (JPN)

You can download the manuals related to this product, such as the software manual, from the Pro-face download page

([www.pro-face.com/trans/en/manual/1085.html](http://www.pro-face.com/trans/en/manual/1085.html))

## Information on Non-Inclusive or Insensitive Terminology

As a responsible, inclusive company, Schneider Electric is constantly updating its communications and products that contain non-inclusive or insensitive terminology. However, despite these efforts, our content may still contain terms that are deemed inappropriate by some customers.



---

## Trademarks

Microsoft® and Windows® are registered trademarks of Microsoft Corporation in the United States and/or other countries.

Intel, Pentium, and Xeon, are trademarks of Intel Corporation in the United States and/or other countries.

QR Code is a registered trademark of DENSO WAVE INCORPORATED in Japan and other countries.

Product names used in this manual may be the registered trademarks owned by the respective proprietors.



---

# Cybersecurity

## Cybersecurity Guideline

Use this product inside a secure industrial automation and control system. Total protection of components (equipment/devices), systems, organizations, and networks from cyber attack threats requires multi-layered cyber risk mitigation measures, early detection of incidents, and appropriate response and recovery plans when incidents occur. For more information about cybersecurity, refer to the Pro-face HMI/IPC Cybersecurity Guide.

[https://www.proface.com/en/download/manual/cybersecurity\\_guide](https://www.proface.com/en/download/manual/cybersecurity_guide)

### **WARNING**

#### **POTENTIAL COMPROMISE OF SYSTEM AVAILABILITY, INTEGRITY, AND CONFIDENTIALITY**

- Change default passwords at first use to help prevent unauthorized access to device settings, controls, and information.
- Disable unused ports/services and default accounts, where possible, to minimize pathways for malicious attacks.
- Place networked devices behind multiple layers of cyber defenses (such as firewalls, network segmentation, and network intrusion detection and protection).
- Apply the latest updates and hotfixes to your Operating System and software.
- Use cybersecurity best practices (for example: least privilege, separation of duties) to help prevent unauthorized exposure, loss, modification of data and logs, interruption of services, or unintended operation.

**Failure to follow these instructions can result in death, serious injury, or equipment damage.**



---

# Overview

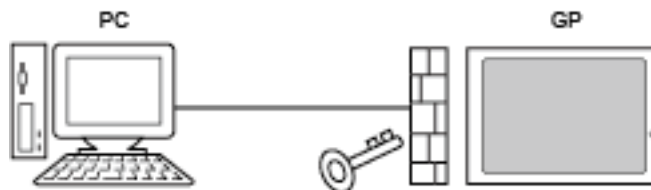
## Connection Key

The connection key is the key which permits communication between the display unit and the GP-Pro EX transfer tool, Pro-Server EX, and GP-Viewer EX.

Connection key setting is required when transferring with GP-Pro EX Ver. 4.09.200 or higher.

A connection key is set for each display unit.

When a connection key is set, it is necessary to perform authentication using the key before performing operations such as sending or receiving project data or displaying the display unit screen on a PC.



- If you forget the connection key, you will not be able to connect to the display unit.
- The initial connection key setting is performed when transferring (sending) a project for the first time. Changing the connection key and setting whether or not to use it are performed in offline mode.
- The connection key must satisfy all of the following requirements.
  - Minimum 8, maximum 100 characters
  - Must contain one or more each of lowercase letters (a - z), uppercase letters (A - Z), numbers (0 - 9), and special characters ( ' () ~ ! @ # \$ % & ; : , . - \_ { } \* + = | < > ? [ ] " ^ \ ).
- The connection will be forcibly terminated if three minutes have elapsed with the [Authentication] dialog box displayed or if the key is incorrect.
- The connection key must be input when performing any of the following operations with the transfer tool.
  - [Send Project], [Receive Project], [Compare Project], [Display Unit Information], [CF/SD Card Connection], [Transfer Enhanced Recipe], [Send Security Data], [Receive Security Data]
- The connection key is erased when the user memory is initialized. When starting the display unit for the first time after initialization, the connection key setting screen will be displayed. Set the connection key again.

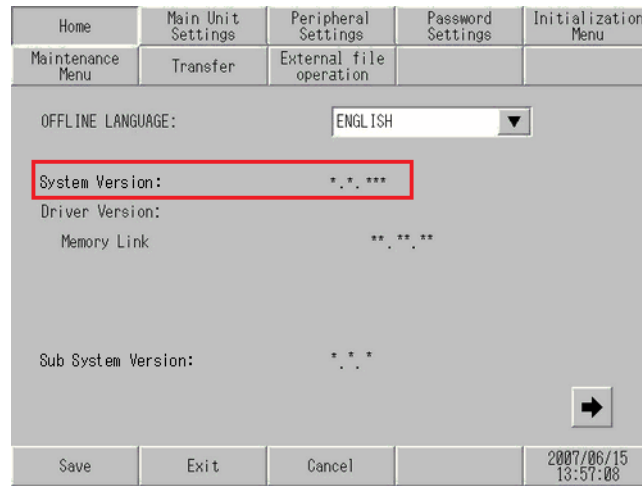
## System Version

The system version is the runtime version that is installed in the display unit. The points which require attention for setting a connection key when transferring a project vary depending on the system version.

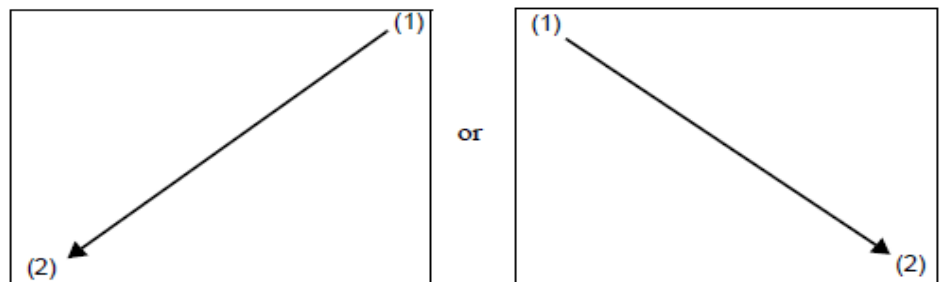
### Checking the system version (when project transfer is completed)

The system version can be checked from [Home] in offline mode.





To switch to offline mode, touch the panel top right corner → bottom left corner, or top left corner → bottom right corner, (within 40 pixels vertically and horizontally) in sequence within 0.5 seconds.



**Note:** When using WinGP with the SP5000 Series Open Box or IPC Series, touch the panel top right corner → bottom left corner, or top left corner → bottom right corner, (within 40 pixels vertically and horizontally) in sequence within 5 seconds.

## Checking the system version (when project transfer is not completed)

The system version can be checked on the screen that is displayed when the display unit power is turned on.



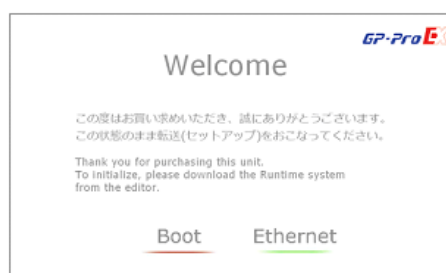


# List of Transfer Procedure Combinations

The connection key is the key which permits communication between the display unit and the GP-Pro EX transfer tool, Pro-Server EX, and GP-Viewer EX.

This table should be viewed as explained below.

- **Display unit:** Indicates the transfer destination display unit. The display units corresponding to each group are the following.
  - Group 1: GP6000 Series, ST6000 Series, STM6000 Series, STC6000 Series, ET6000 Series, SP5000 Series
  - Group 2: GP4000 Series, GP4000H Series, IoT Gateway (excluding GP4000M Series, GP41\*\*)
  - Group 3: LT4000 Series, GP-4100 Series (Color Model)
- **Display unit system version:** Indicates the system version of the display unit before transfer. To check the system version, refer to “System Version” (Page 8).
- **Previous transfer:** Indicates the status of the display unit before transfer.
  - Yes: A project has been transferred to the display unit.
  - No: No project has been transferred to the display unit yet, and the [Initial Start Mode] or [Welcome] screen is displayed.



- **GP-Pro EX version:** This is the version of the GP-Pro EX (transfer tool) used for transfer.
- **Procedure:** This is the procedure number to refer to.

#	Display unit	Display unit system version	Previous transfer	GP-Pro EX version	Procedure
1	Group 1	4.9.13 or lower	No	4.09.120 or lower	Procedure 1 (Page 14)
2				4.09.200 or higher	Procedure 3 (Page 14)
3			Yes	4.09.120 or lower	Procedure 1 (Page 14)
4				4.09.200 or higher	Procedure 3 (Page 14)
5		4.9.38 or higher	No	4.09.120 or lower	Procedure 1 (Page 14)
6				4.09.200 or higher	Procedure 3 (Page 14)
7			Yes	4.09.120 or lower	Procedure 2 (Page 14)



8				4.09.200 or higher	Procedure 4 (Page 15)
9	Group 2*1	4.9.2 or lower	No	4.09.120 or lower	Procedure 1 (Page 14)
10				4.09.200 or higher	Procedure 3 (Page 14)
11			Yes	4.09.120 or lower	Procedure 1 (Page 14)
12				4.09.200 or higher	Procedure 3 (Page 14)
13		4.9.10 to 4.9.13	Yes	4.09.120 or lower	Procedure 1 (Page 14)
14				4.09.200 or higher	Procedure 3 (Page 14)
15		4.9.38 to 4.9.89	Yes	4.09.120 or lower	Procedure 2 (Page 14)
16				4.09.200 to 4.09.500	Procedure 4 (Page 15)
17				4.09.550 to 4.09.600	Procedure 6 (Page 17)
18				5.00.000 or higher	Procedure 4 (Page 15)
19		4.9.92, 4.9.100	No	4.09.120 or lower	Procedure 1 (Page 14)
20				4.09.200 to 4.09.550	Procedure 3 (Page 14)
21				4.09.600	Procedure 5 (Page 16)
22				5.00.000 or higher	Procedure 3 (Page 14)
23			Yes (transfer using 4.09.120 or lower)	4.09.120 or lower	Procedure 1 (Page 14)
24				4.09.200 to 4.09.500	Procedure 5 (Page 16)
25				4.09.550 to 4.09.600	Procedure 6 (Page 17)
26				5.00.000 or higher	Procedure 5 (Page 16)
27			Yes (transfer using 4.09.200 or higher)	4.09.120 or lower	Procedure 2 (Page 14)
28				4.09.200 to 4.09.500	Procedure 4 (Page 15)
29				4.09.550 to 4.09.600	Procedure 6 (Page 17)
30				5.00.000 or higher	Procedure 4 (Page 15)
31		4.9.102	No	4.09.120 or lower	Procedure 1 (Page 14)



32				4.09.200 or higher	Procedure 3 (Page 14)
33			Yes (transfer using 4.09.120 or lower)	4.09.120 or lower	Procedure 1 (Page 14)
34				4.09.200 or higher	Procedure 5 (Page 16)
35			Yes (transfer using 4.09.200 or higher)	4.09.120 or lower	Procedure 2 (Page 14)
36				4.09.200 or higher	Procedure 4 (Page 15)
37		4.9.106 or higher	Yes	4.09.120 or lower*2	Procedure 2 (Page 14)
38				4.09.200 or higher*2	Procedure 4 (Page 15)
39	Group 3*3	4.9.106 or lower	No	4.09.120 or lower	Procedure 1 (Page 14)
40				4.09.200 or higher	Procedure 3 (Page 14)
41			Yes	4.09.120 or lower	Procedure 1 (Page 14)
42				4.09.200 or higher	Procedure 3 (Page 14)
43		4.9.107, 4.9.113	No	4.09.120 or lower	Procedure 1 (Page 14)
44				4.09.200 or higher	Procedure 3 (Page 14)
45			Yes (transfer using 4.09.120 or lower)	4.09.120 or lower	Procedure 1 (Page 14)
46				4.09.200 or higher	Procedure 7 (Page 18)
47			Yes (transfer using 4.09.200 or higher)	4.09.120 or lower	Procedure 2 (Page 14)
48				4.09.200 or higher	Procedure 4 (Page 15)
49		4.9.123 or higher	Yes	4.09.120 or lower	Procedure 2 (Page 14)
50				4.09.200 or higher	Procedure 4 (Page 15)

\*1: If a project created with Ver. 4.09.400 or higher is transferred to one of the following models with version lower than Ver. 4.09.400, the display unit OS version will be upgraded. Note that with models corresponding to [these revisions](#), it is not possible to revert to a previous version.

\*2: With models corresponding to [these revisions](#), transfer from GP-Pro EX Ver. 4.09.350 or lower is not possible. Transfer using Ver. 4.09.400 or higher.

\*3: If a project created with Ver. 4.09.450 or higher is transferred to a LT4000 Series with version lower than Ver. 4.09.450, the display unit OS version will be upgraded. Note that depending on the display unit's revision, you cannot revert to a previous version.



---

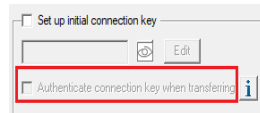
**Note:** For the transfer operation procedure, refer to “[34 Transfer](#)” in the GP-Pro EX reference manual.

## Procedure 1

Because the connection key setting does not exist on the transfer tool side and display unit, connection key setting or authentication is not required when transferring.

## Procedure 2

**If the [Authenticate connection key when transferring] check box was cleared in the transfer tool [Transfer Settings] dialog box when the previous transfer was performed**



Because the connection key setting does not exist on the transfer tool side and display unit, connection key setting or authentication is not required when transferring.

### If a connection key has been set on the display unit side

It is necessary to transfer using external storage.

If transfer is performed by a means other than external storage, system error RAAA181 will be displayed on the display unit and the transfer will fail.

When transferring using external storage, connection key setting or authentication is not required. After transfer, the display unit connection key is cleared.

## Procedure 3

During transfer, a screen requesting setting of a connection key is displayed on the transfer tool side.

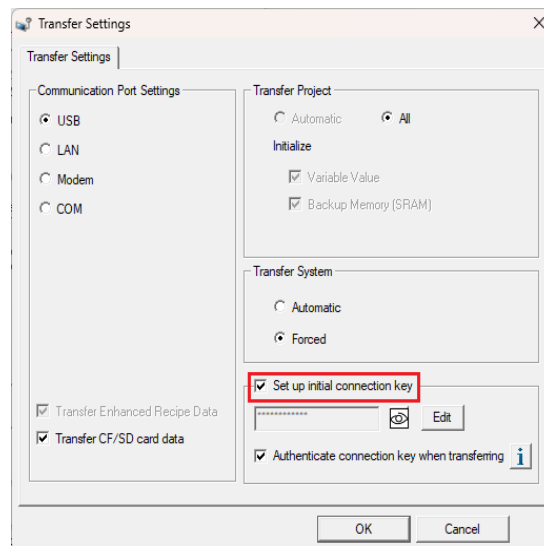
When transferring using external storage, a screen requesting setting of a connection key is displayed on the display unit after the display unit is restarted.

**Important:** If system error RAAA203 was displayed on the display unit screen, perform forced transfer using external storage. Transfer by other methods is not possible.

For details, refer to “The following error message is displayed on the display unit screen: “RAAA203: Error occurred at system startup. Use the Transfer Tool to run a forced transfer operation.”” (Page 27).

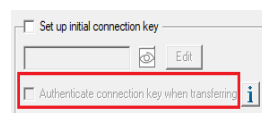
**Note:** When transferring using external storage with GP-Pro EX Ver. 4.09.350 or higher, registering an initial value for the connection key in the transfer tool [Transfer Settings] dialog box will eliminate the need to input the connection key setting after transfer. The connection key will be set during transfer.





## Procedure 4

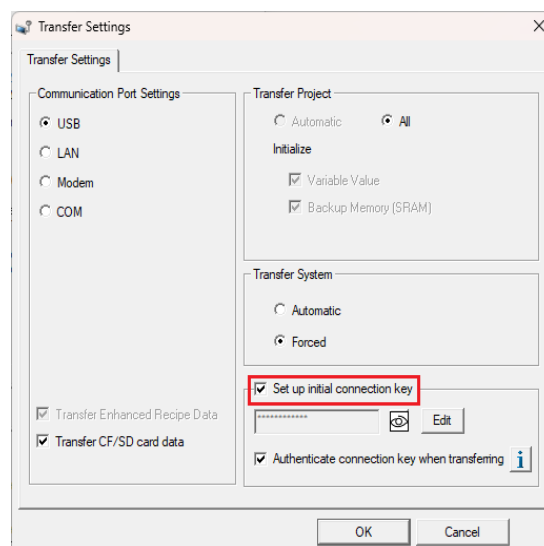
If the [Authenticate connection key when transferring] check box was cleared in the transfer tool [Transfer Settings] dialog box when the previous transfer was performed



During transfer, a screen requesting setting of a connection key is displayed on the transfer tool side.

When transferring using external storage, a screen requesting setting of a connection key is displayed on the display unit after the display unit is restarted.

**Note:** When transferring using external storage with GP-Pro EX Ver. 4.09.350 or higher, registering an initial value for the connection key in the transfer tool [Transfer Settings] dialog box will eliminate the need to input the connection key setting after transfer. The connection key will be set during transfer.



If a connection key has been set on the display unit side

During transfer, a screen requesting authentication of the connection key is displayed. Enter the connection key which was set.

When transferring using external storage, a screen requesting authentication of the connection key is displayed on the display unit.

**Note:** If you forgot the set connection key, refer to “Transfer is not possible because I forgot the connection key.” (Page 23).

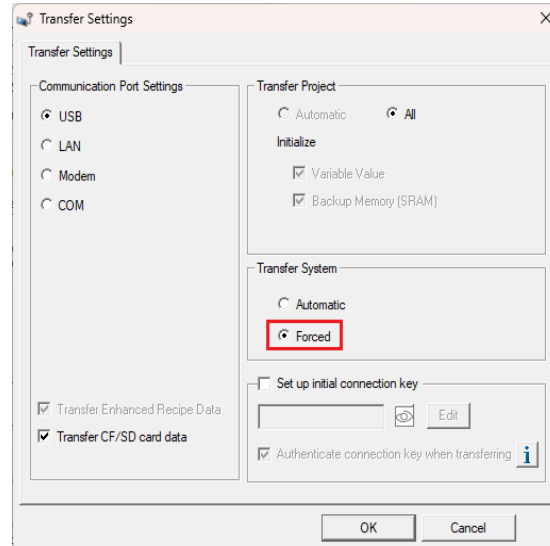


## Procedure 5

Because the connection key is not enabled at the first transfer, it is necessary to perform transfer again.

Refer to the following procedure.

**Important:** When using GP-Pro EX Ver. 4.09.200 to 4.09.350, select [Forced] from [Transfer System] in the transfer tool [Transfer Settings] dialog box. If [Automatic] is selected, the connection key will not be set in the display unit.



1. Transfer the project from the transfer tool (first time).  
The display unit is restarted after the transfer, and a screen requesting setting of a connection key is displayed on the display unit.



**Important:** A screen (initial screen) that appears when the display unit power is turned on may be displayed depending on the combination of the display unit system version, transfer tool version, and previous transfer status. Be sure to perform the following procedure.

2. Transfer the project again (second time). During transfer, a screen requesting setting of a connection key is displayed on the transfer tool side. The display unit is restarted after the transfer, and the initial screen is displayed. At this time, the connection key is set in the display unit, and transfer is completed.

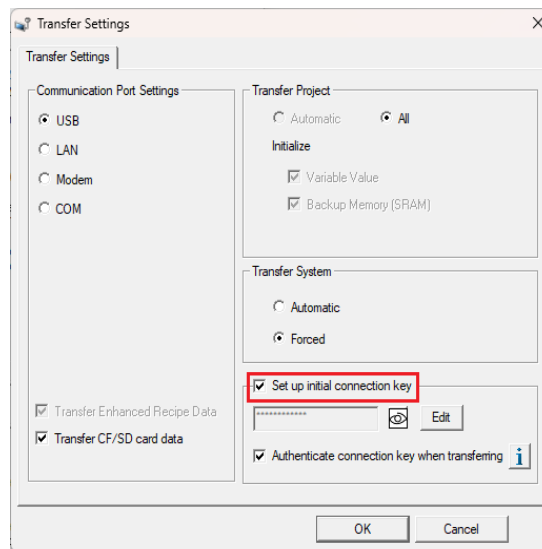
**Important:** If system error RAAA203 was displayed on the display unit screen, perform forced transfer using external storage. Transfer by other methods is not possible.

For details, refer to "The following error message is displayed on the display unit screen: "RAAA203: Error occurred at system startup. Use the Transfer



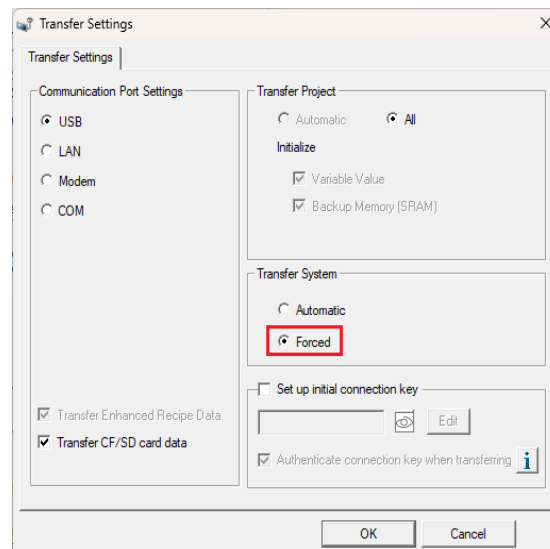
Tool to run a forced transfer operation.” (Page 27).

**Note:** When transferring using external storage with GP-Pro EX Ver. 4.09.350 or higher, registering an initial value for the connection key in the transfer tool [Transfer Settings] dialog box will eliminate the need to input the connection key setting after transfer. The connection key will be set during transfer.



## Procedure 6

Select [Forced] from [Transfer System] in the transfer tool [Transfer Settings] dialog box. If [Automatic] is selected, the connection key will not be set in the display unit.



Because the connection key is not enabled at the first transfer and second transfer, transfer must be performed three times.

Even if the connection key has been set on the display unit side, because it is necessary to set the connection key again, it is necessary to perform transfer three times.

Refer to the following procedure.

1. Transfer the project from the transfer tool (first time).

The display unit is restarted after the transfer, and the initial screen is displayed. However the connection key that was set in the transfer tool is not applied at this time.

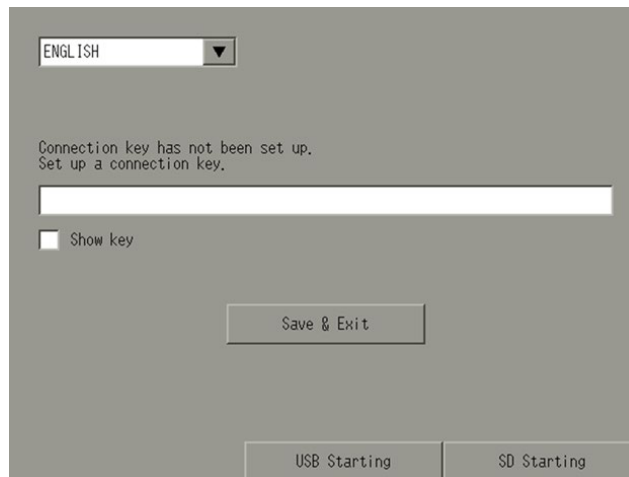
**Note:** A screen requesting setting of a connection key may be displayed on the display unit at this time depending on the combination of operating



conditions. If this occurs, refer to Step 3.

2. Transfer the project again (second time).

The display unit is restarted after the transfer, and a screen requesting setting of a connection key is displayed on the display unit.

A screenshot of a display unit screen. At the top, there is a dropdown menu showing 'ENGLISH'. Below it, a message reads: 'Connection key has not been set up. Set up a connection key.' There is a text input field for the connection key. Below the input field is a checkbox labeled 'Show key'. At the bottom, there is a 'Save & Exit' button. At the very bottom, there are two buttons: 'USB Starting' and 'SD Starting'.

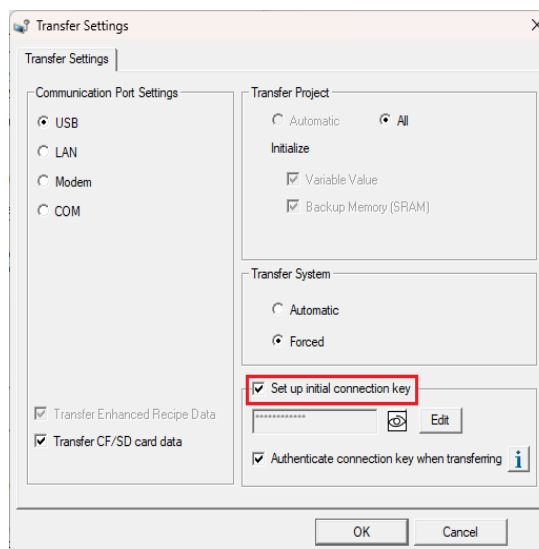
3. Transfer the project again (third time). During transfer, a screen requesting setting of a connection key is displayed on the transfer tool side.

The display unit is restarted after the transfer, and the initial screen is displayed. At this time, the connection key is set in the display unit, and transfer is completed.

**Important:** If system error RAAA203 was displayed on the display unit screen, perform forced transfer using external storage. Transfer by other methods is not possible.

For details, refer to “The following error message is displayed on the display unit screen: “RAAA203: Error occurred at system startup. Use the Transfer Tool to run a forced transfer operation.”” (Page 27).

**Note:** When transferring using external storage with GP-Pro EX Ver. 4.09.350 or higher, registering an initial value for the connection key in the transfer tool [Transfer Settings] dialog box will eliminate the need to input the connection key setting after transfer. The connection key will be set during transfer.

A screenshot of the 'Transfer Settings' dialog box. The 'Transfer Settings' tab is selected. On the left, under 'Communication Port Settings', 'USB' is selected. On the right, under 'Transfer Project', 'All' is selected. Below that, 'Initialize' is checked, with 'Variable Value' and 'Backup Memory (SRAM)' also checked. Under 'Transfer System', 'Forced' is selected. At the bottom, 'Set up initial connection key' is checked and highlighted with a red box. Below this checkbox is a text input field with a masked key icon and an 'Edit' button. 'Authenticate connection key when transferring' is also checked. At the bottom are 'OK' and 'Cancel' buttons.

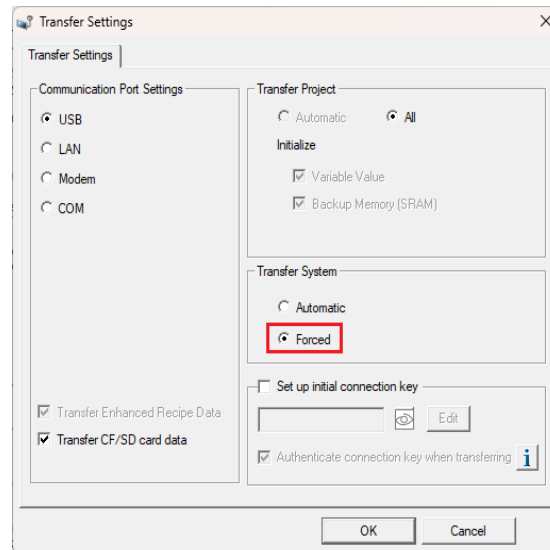
## Procedure 7

Because the connection key is not enabled at the first transfer, it is necessary to perform transfer again.

Refer to the following procedure.



**Important:** When using GP-Pro EX Ver. 4.09.200 to 4.09.350, select [Forced] from [Transfer System] in the transfer tool [Transfer Settings] dialog box. If [Automatic] is selected, the connection key will not be set in the display unit.



1. Transfer the project from the transfer tool (first time).

The display unit is restarted after the transfer, and the initial screen is displayed. However the connection key that was set in the transfer tool is not applied at this time.

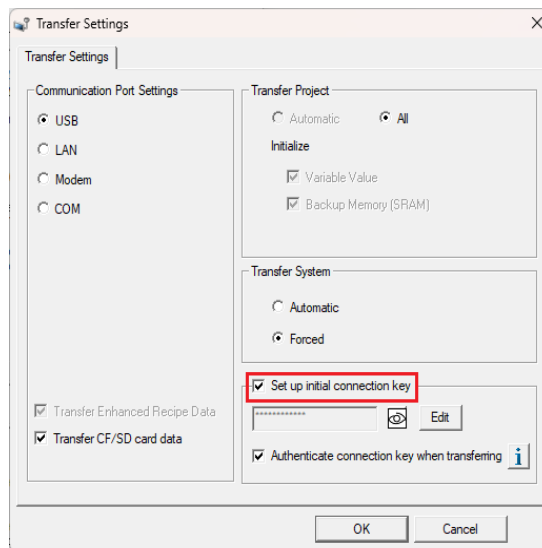


2. Transfer the project again (second time). During transfer, a screen requesting setting of a connection key is displayed on the transfer tool side.

→ The display unit is restarted after the transfer, and the initial screen is displayed. At this time, the connection key is set in the display unit, and transfer is completed.

**Note:** When transferring using external storage with GP-Pro EX Ver. 4.09.350 or higher, registering an initial value for the connection key in the transfer tool [Transfer Settings] dialog box will eliminate the need to input the connection key setting after transfer. The connection key will be set during transfer.







---

# Restrictions

- Also check the restrictions that are listed in the GP-Pro EX reference manual.

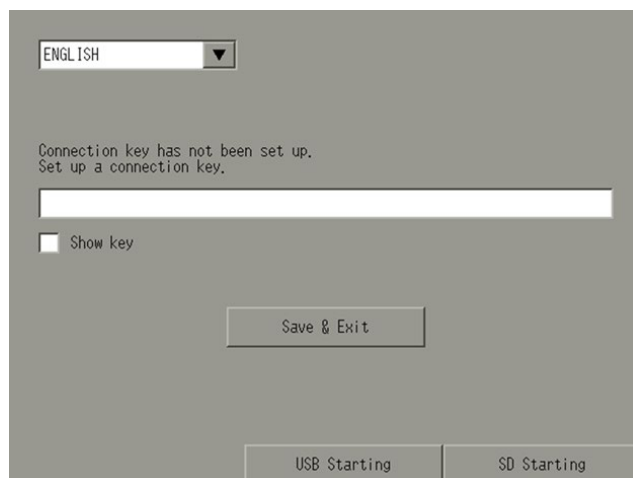
## [Restrictions](#)

- If transfer was performed using GP-Pro EX Ver. 4.09.120 or lower, the display unit will restart after a project was transferred to the display unit using the transfer tool. It is recommended that you do not turn off the power from when restart occurs until the initial screen is displayed. Also be careful not to turn off the power for around 10 seconds after restart.
- When backing up a project on a GP-Pro EX Ver. 4.09.200 or higher (system version 4.9.38 or higher) display unit onto external storage and transferring it to another display unit, a connection key is not set.



# Troubleshooting

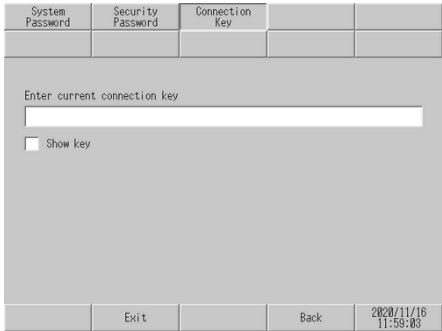
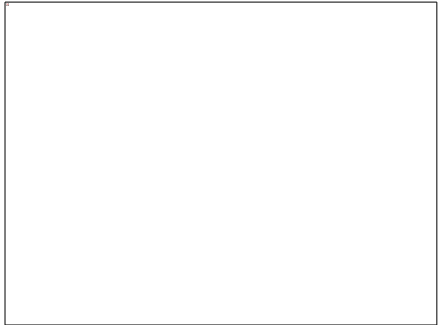
A screen requesting setting of a connection key is displayed on the display unit even though a connection key is set.



## Cause and correction

Cause	Correction
<p>This screen may be displayed again when transfer was performed with [Set up initial connection key] enabled with a GP-Pro EX Ver. 4.09.200 or higher transfer tool after a project was transferred using GP-Pro EX Ver. 4.09.120 or lower on the [Welcome] screen of the models in Group 2 (Page 12) or Group 3 (Page 13).</p> <p><b>Note:</b> For details about [Set up initial connection key], refer to the GP-Pro EX reference manual.</p> <p><a href="#">34.12.1.1 Transfer Settings</a></p>	<p>Set the connection key on the screen and then perform transfer again. Authentication using the set connection key will be required at subsequent transfers.</p>
<p>This screen is displayed because the connection key is also erased when the user memory is initialized.</p>	
<p>This screen may be displayed if the power was turned off around 10 seconds after display unit restart following project transfer using a GP-Pro EX Ver. 4.09.120 or lower transfer tool.</p>	<p>Set the connection key on the display unit screen, then set the connection key to disabled from [Security Settings] in offline mode and perform transfer again.</p> <p>For the [Security Settings] method, refer to the following procedure.</p> <ol style="list-style-type: none"><li>1. Change to offline mode and touch [Security Settings] from the item selection switches.</li><li>2. [Security Settings] opens. Touch [Connection Key].</li></ol>



	3. [Connection Key] opens. When [Enter current connection key] is touched, a keyboard is displayed. Enter the current key.
	
	4. Clear the [Authenticate connection key when transferring] checkbox.
	
	5. Touch [Exit].

## Transfer is not possible because I forgot the connection key.

### Correction

- Initialize the user memory.

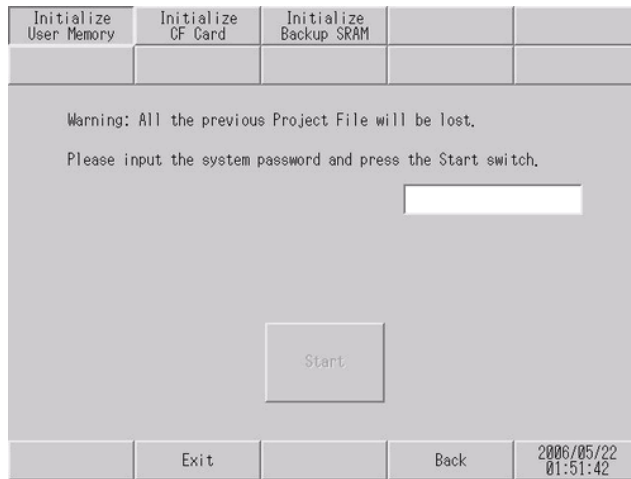
#### Important:

- Be aware that initialization cannot be canceled after [Start] is pressed. Do not turn off power while initialization is in progress.
- Data in backup memory (SRAM) is also erased. For GP-4100 Series (excluding GP-411\*T3), the data in virtual backup memory is also erased.
- Even when initialization is performed, the display unit system, drivers, and other system and time settings data are not erased.
- All data held in logic programs is erased.

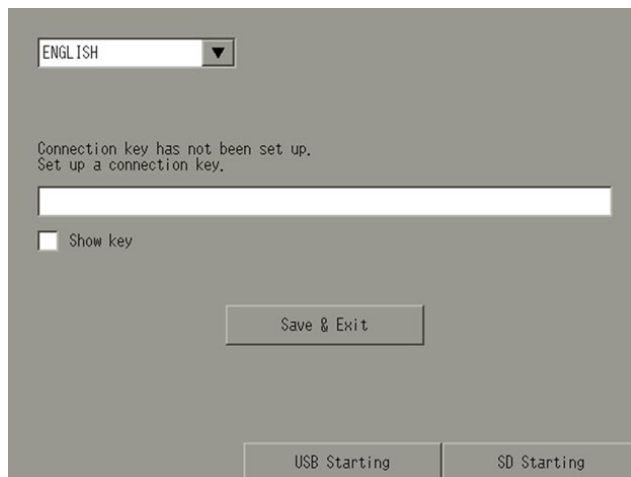
Perform the following procedure.

1. Change to offline mode and touch [Initialization Menu] from the item selection switches.
2. [Initialization Menu] opens. Touch [Initialize User Memory].
3. [Initialize User Memory] opens. Touch the input field and enter "1101" (only when [System Password] is [None]) or the password that was set for [System Password] from the keyboard.





4. Touch [Start].
5. When initialization is completed, touch [Close].
6. Touch [Exit] at the bottom of the screen to restart the unit.
7. Confirm that the following message is displayed: "Connection key has not been set up. Set up a connection key."

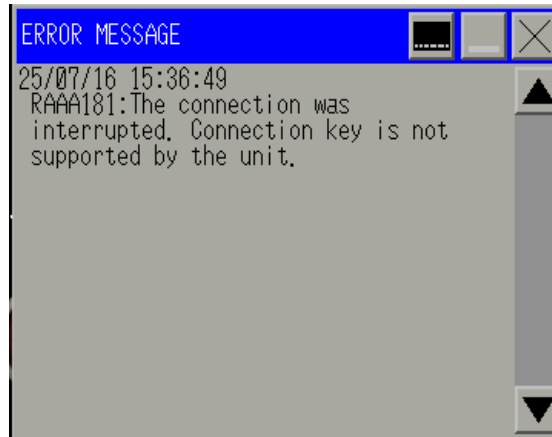


8. Set the connection key before performing transfer.
- When using a model in Group 1 (Page 11), it is possible to set the connection key again by performing transfer using external storage with GP-Pro EX Ver. 4.09.120 or lower, downgrading the display unit system version, and transferring again by forced transfer using a Ver. 4.09.200 or higher transfer tool.

**The following error message is displayed on the display unit screen: "RAAA181: The connection was interrupted. Connection password is not supported by the unit."**







## Cause

This occurs when a project was transferred from a transfer tool version that does not support the connection key to a display unit that supports the connection key.

## Correction

- Use a GP-Pro EX Ver. 4.09.200 or higher transfer tool.
- Transfer using external storage.
- By initializing the display unit user memory, it may be possible to transfer using a version lower than Ver. 4.09.200.

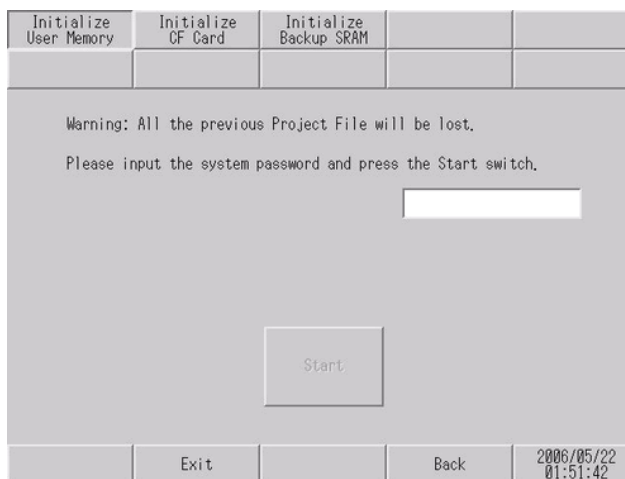
### Important:

- Be aware that initialization cannot be canceled after [Start] is pressed. Do not turn off power while initialization is in progress.
- Data in backup memory (SRAM) is also erased. For GP-4100 Series (excluding GP-411\*T3), the data in virtual backup memory is also erased.
- Even when initialization is performed, the display unit system, drivers, and other system and time settings data are not erased.
- All data held in logic programs is erased.

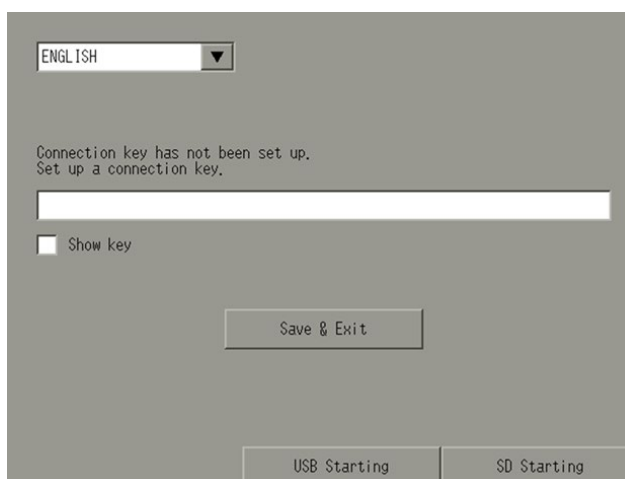
Perform the following procedure.

1. Change to offline mode and touch [Initialization Menu] from the item selection switches.
2. [Initialization Menu] opens. Touch [Initialize User Memory].
3. [Initialize User Memory] opens. Touch the input field and enter "1101" (only when [System Password] is [None]) or the password that was set for [System Password] from the keyboard.

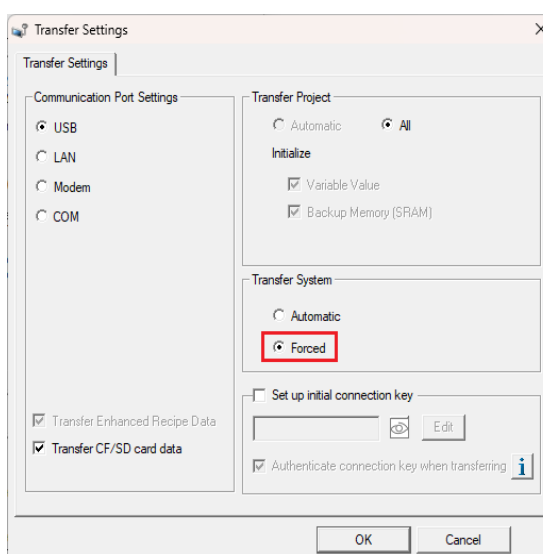




4. Touch [Start].
5. When initialization is completed, touch [Close].
6. Touch [Exit] at the bottom of the screen to restart the unit.
7. Confirm that the following message is displayed: "Connection key not set. Set a new connection key."



8. Select [Forced] from [Transfer System] in the transfer tool [Transfer Settings] dialog box.



9. Transfer the project.

**Important:** With display units in Group 2 (Page 12), transfer may not be possible with GP-Pro EX versions lower than Ver. 4.09.400. It depends on the revision of the unit you are using. If a corresponding



revision, the above procedure cannot be used.

**The following error message is displayed on the display unit screen: “RAAA203: Error occurred at system startup. Use the Transfer Tool to run a forced transfer operation.”**

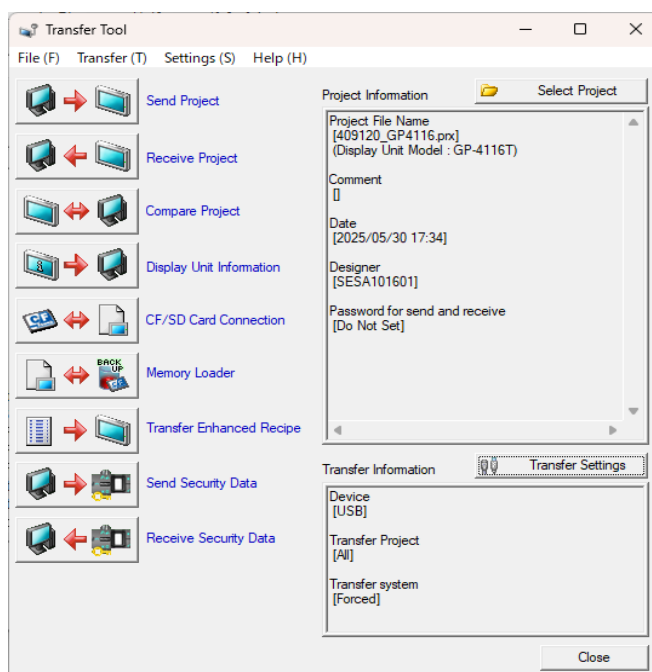
### Cause

A problem was found in a system program contained in the transferred project.

### Correction

- Perform forced transfer from the transfer tool.
  - If forced transfer is not possible, perform transfer using external storage.
- Perform the following procedure.

1. Insert the external storage into the PC.
2. Select [Memory Loader] from the transfer tool.



3. From [Memory Loader], select [Create Backup File].
4. From [Select Folder], specify the top directory of the external storage and click [OK].
5. Insert the external storage into the display unit.
6. Click the external storage name button in the error screen that appears on the display unit.



Schneider Electric Japan Holdings Ltd.

4-4-9 Kitahama, Chuo-ku

Osaka, 541-0041 Japan

+ 81(0) 50 4561 4800

[www.proface.com](http://www.proface.com)

As standards, specifications, and design change from time to time,  
please ask for confirmation of the information given in this  
publication.

© 2025– Schneider Electric Japan Holdings Ltd. All rights reserved.

EX-CONKEY-MM01-EN.00