

Customer journey for the Offline Software License Activation

Agenda

1.	About license.....	2
2.	GP-Pro EX V.5.0 or later installation	3
3.	How to get your Activation ID?.....	4
4.	Activation.....	7
4-1.	Offline Activation.....	9
4-1-1.	Create Activate Request Information file.	9
4-1-2.	Create "Activation Answer Information File" (.AAI).....	11
4-1-3.	Activate the License on an offline PC.....	12
	Important Information.....	16

1. About license

From V.5.0 or later, the license type will change and the specifications will be as follows.

Edition	License / Activation	Supported model	Limitation	Upgrade
Full version	Need license and activation.	All models	None	-
Free version	No need license and activation. It is selected between Free or Trial version during installation.	ET6000 series, GP4110T series	Cannot save project files for unsupported models.	Can upgrade to the Full license anytime after the installation or revert to the Free license
Trial version	No need license and activation. It is selected between Free or Trial version during installation.	All models	<ul style="list-style-type: none">- Usable for 10 days only. Cannot be used even if uninstalled.- Cannot transfer a project file created by the Trial version.	<ul style="list-style-type: none">- Can upgrade to the Full license anytime after the installation.- Unable to change to Free license. To use Free license, you need to uninstall the Trial and install again by selecting the Free license.

Full license as below:

Model	Description
PFXEXBT5SA	GP-Pro EX V5 single License (1 seat)
PFXEXBT5GA	GP-Pro EX V5 group License (3 seats)
PFXEXBT5TA	GP-Pro EX V5 team License (10 seats)
PFXEXBT5EA	GP-Pro EX V5 entity License (100 seats)
PFXEXBT5GUP	GP-Pro EX V5 UPGRADE License (3 seats) *
PFXEXWGP5SA	GP-Pro EX V5 Windows Runtime, Pro-face IPC
PFXEXWGOT5SA	GP-Pro EX V5 Windows Runtime, general PC

* Limited-Time Special Upgrade License for Existing V4.x Users – Available Until the End of December 2026

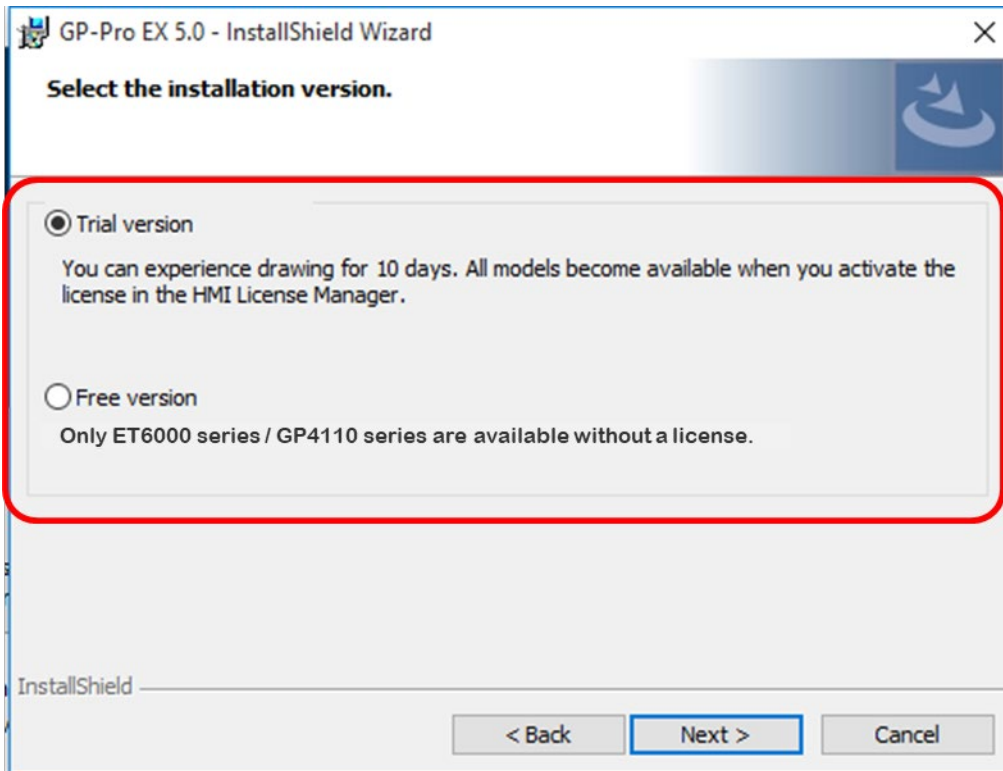
GP-Pro EX license is a floating license.

Full license requires License Activation/Deactivation to enable the Software license to use it perpetually.

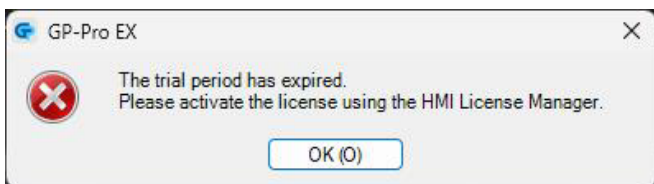
This document explains how to get the Activation ID and how to activate the purchased license online.

2. GP-Pro EX V.5.0 or later installation

When installing GP-Pro EX, you will be asked to select either the Trial version or the Free version as shown below. Please select the version you wish to use.



- ※ If you install the Trial version, it will become unusable after 10 days and you will not be able to switch to the Free version (ET6000 series, GP4110 series). You will need to uninstall and reinstall the Free version.
- ※ Activation to Full version is possible through HMI License Manager even after the trial period has expired.
- ※ When the Trial version period has expired, you will get below error message when you start up the software.



After the installation is complete, activate the license.

3. How to get your Activation ID?

3-1. Once your order has been successfully placed, you will get an email from below email address.

schneider-electricsandbox@flexnetoperations.com

Congratulations On Your Schneider Electric License Purchase for GP-Pro

schneider-electricsandbox@flexnetoperations.com
宛先 C C

① このメッセージの表示に問題がある場合は、ここをクリックして Web ブラウザーで表示してください。

メッセージを日本語に翻訳する 翻訳しない: 英語 翻訳に関する設定

Life Is On | Schneider Electric

Dear Valued Customer,

Congratulations on your recent Schneider Electric product purchase.

Provided is important information for managing your software product license(s).

Order Details

Your Sales Order Number is: XXX

Commercial Reference (SKU):	PFEXBT55A
Description:	GP-Pro EX V5.0 single license
Quantity:	1

[Login To Manage Your Licenses On mySchneider](#)

How To Access and Activate Your Licenses

In case you are new to the License Management Portal, then kindly [Register](#) with your corporate Email-ID (or the one used for Order placement) to proceed further.

Post login, you will be redirected to a window with your license purchase details, Product Installation & License Activation Assistance Documents.

Support

If you encounter any issues or have questions, please don't hesitate to contact our support team at [Digital Supply Chain Support](#).

©Schneider Electric. All Rights Reserved. Schneider Electric trademarks are owned by Schneider Electric or its affiliates. All other trademarks are the property of their respective owners.

This document is for informational purposes only. It does not constitute an offer or a contract.

[Privacy Policy](#) | [Contact Us](#)

Commercial Reference, description and Quantity for the product you ordered.

Access here to get your Activation ID for your ordered products.

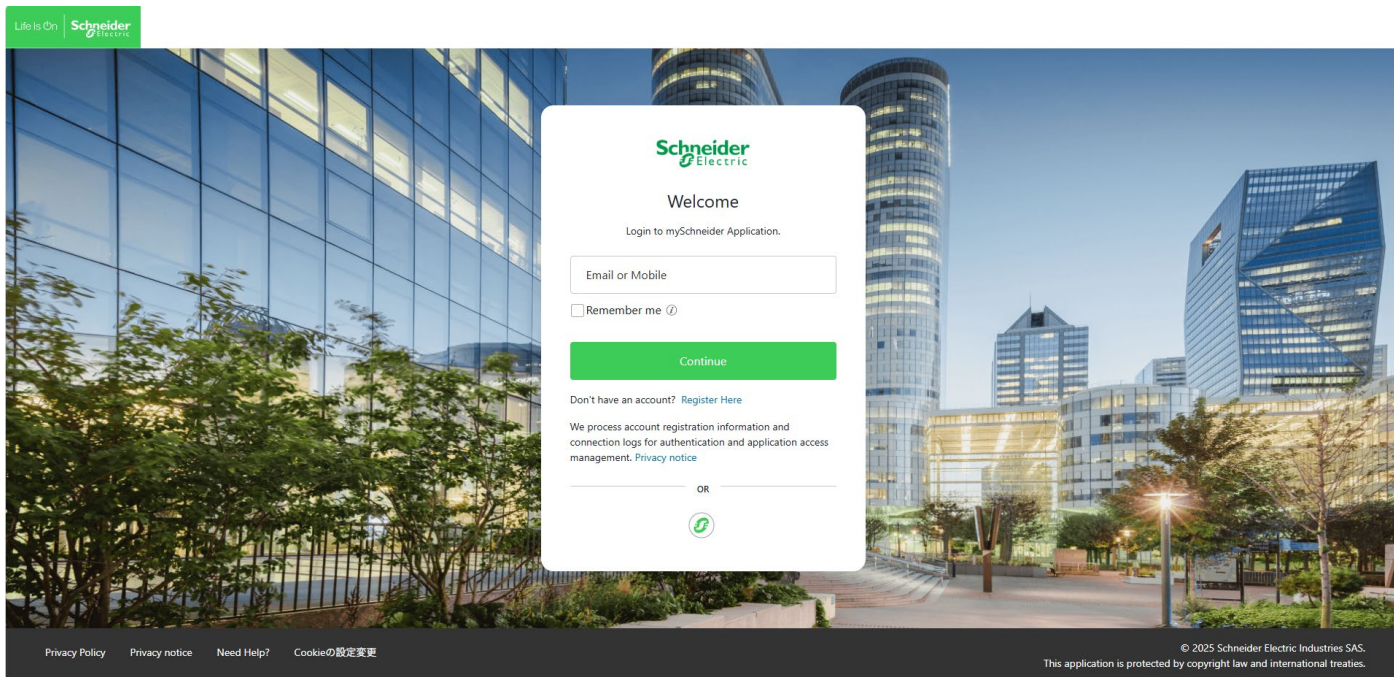
If this is your first time using the License Management Portal, please access here to register before you try to activate.

If you faced any issues during your activation, please contact here for any assistance.

* If you see the message "Click here to download pictures...." on the top of your email, please download the pictures, otherwise, you will have some difficulties accessing the website.

3-2. Click "Login To Manage Your Licenses On mySchneider" in the email you received.

3-3. Access to my Schneider and Login.



You will get this screen.

The image shows the 'Software licenses' page in the mySchneider Application. A modal titled 'License Activation and Use' is open in the foreground. A red box highlights the list of licenses, and a red arrow points from a text box to this list.

License Activation and Use

The following license: **GP-Pro EX V5** is ready to use.
You can use the total number of entitlements on a single device, or you can spread them across multiple devices.

Entitlement ID: [blurred]

The deed of title includes: 7 Licenses

[icon]	GP-Pro EX Windows RunTime, PF iPC
[icon]	GP-Pro EX V5.0 single license
[icon]	GP-Pro EX V5 UPGRADE lic. (3 seats)
[icon]	GP-Pro EX V5.0 team license (10 seats)

How to activate and use a license
To activate your license, follow these steps:

- For setup packages to install the software, please contact your local Schneider Electric customer support.
- For information on how to activate a license or subscription, see the instructions related to the software provided at . Instruction manual
- The installation process includes steps to activate the license. Please use the Activation ID above.

Software licenses

7 sum Licenses | 0 Expired

Used Predefined Groups: [dropdown menu]

Entitlement ID: ENT-A-S00159623.bb6b6ea9de696a

Purchasing References: [input field]

[export] 7 Licenses

Table headers: product, Activation ID (License Key), expiration date, Usage Rights, Group

You can check all your available licenses from this page.

new

My Menu

product

software

service

Solution

support

company information

license

Devices

download

manage

purchase

7 sum Licenses

0 Expired

0 Expiring soon

7 Unused or invalid

Even if the PO is different, you can check all purchased licenses by "Reset" here.

search

Advanced Search

Reset

Used Predefined Groups

Product / Part Number

Activation ID (License Key)

Entitlement ID

Product Range

Installer Email

Purchasing References

Service Agreements

Available license and Activation ID

Bulk License Actions

Select Action

Register Licenses

	product Part Number	Activation ID (License Key)	expiration date status	Usage Rights Available / Total	Group	Action
✓	GP-Pro EX Windows RunTime, PF iPC GP-Pro EX V5 PFEXXWGP5SA - Version 5 Complete		Waiting for user activation	1 / 1		
✓	GP-Pro EX V5.0 single license GP-Pro EX V5 PFEXXBT5SA - Version 5 Complete Software Assurance Service:Expires 2026-05-31		Active perpetual	1 / 1		
✓	GP-Pro EX V5 UPGRADE lic. (3 seats) GP-Pro EX V5		Waiting for user activation	3 / 3		

How many licenses are in use / can be used

4. Activation

Copy your Activation ID from your mySchneider account.

License Activation and Use

The following license: **GP-Pro EX V5** is ready to use.
You can use the total number of entitlements on a single device, or you can spread them across multiple devices.

Entitlement ID: [REDACTED]

The deed of title includes: 7 Licenses

- GP-Pro EX Windows RunTime, PF IPC
- GP-Pro EX V5.0 single license**
- GP-Pro EX V5 UPGRADE lic. (3 seats)
- GP-Pro EX V5.0 Inam license (10 seats)

My Menu | product | software | service | Solution | support | company information

license | Devices | download | manage | purchase

7 sum Licenses | 0 Expired | 0 Expiring soon | 7 Unused or invalid

Used Predefined Groups: [dropdown] | Product / Part Number: [input] | Activation ID (License Key): [input] | Search | Advanced Search

Entitlement ID: [input] | Product Range: [dropdown] | Installer Email: [input] | Reset

Purchasing References: [input] | Service Agreements: [dropdown]

export | 7 Licenses | Bulk License Actions | Select Action | Register Licenses

product	Part Number	Activation ID (License Key)	expiration date	Usage Rights	Group	Action
GP-Pro EX Windows RunTime, PF IPC	GP-Pro EX V5 PF20X00PF05A - Version 5 Complete	[REDACTED]		Waiting for user activation	1 / 1	
GP-Pro EX V5.0 single license	GP-Pro EX V5 PF20X00PF05A - Version 5 Complete	[REDACTED]		Active	1 / 1	
GP-Pro EX V5 UPGRADE lic. (3 seats)	GP-Pro EX V5 UPGRADE lic. (3 seats)	[REDACTED]		Waiting for user activation	3 / 3	

Run HMI License Manager from your Startup menu or GP-Pro EX Help menu.

S

- Schneider Electric HMI License Manager
- HMI License Manager**
- Release Notes

Project (F) | View (V) | Help (H)

Edit | Preview

NEW

Manual (M)
Parts List (L)
Access Pro-face Website (P)
Confirm Update of GP-Pro EX (U)
Launch HMI License Manager (E)
Version Information (A)



Click "Activate License"

What would you like to do?

A⁷ ✓



Activate License

Activate software with an Activation ID.



Deactivate License

Deactivate software with an Activation ID.

Licenses Activated on This PC

Name	Version	Tier	Activation ID	Part Number	License Model	Expiration Date	

All licenses activated on this PC are displayed. Software other than GP-Pro EX may also be displayed here.

[Learn more](#)

[? About HMI License Manager](#)

Select how you would like to activate the license.

You can select between Activate Online or Activate Offline.

[Home](#) > [Activate License](#)

Activate License

Activate software with an Activation ID.

What would you like to activate?



Software on This PC

Activate the purchased software license on this PC over the Internet.



Software for an Offline Device

Activate the purchased software license for an offline device.



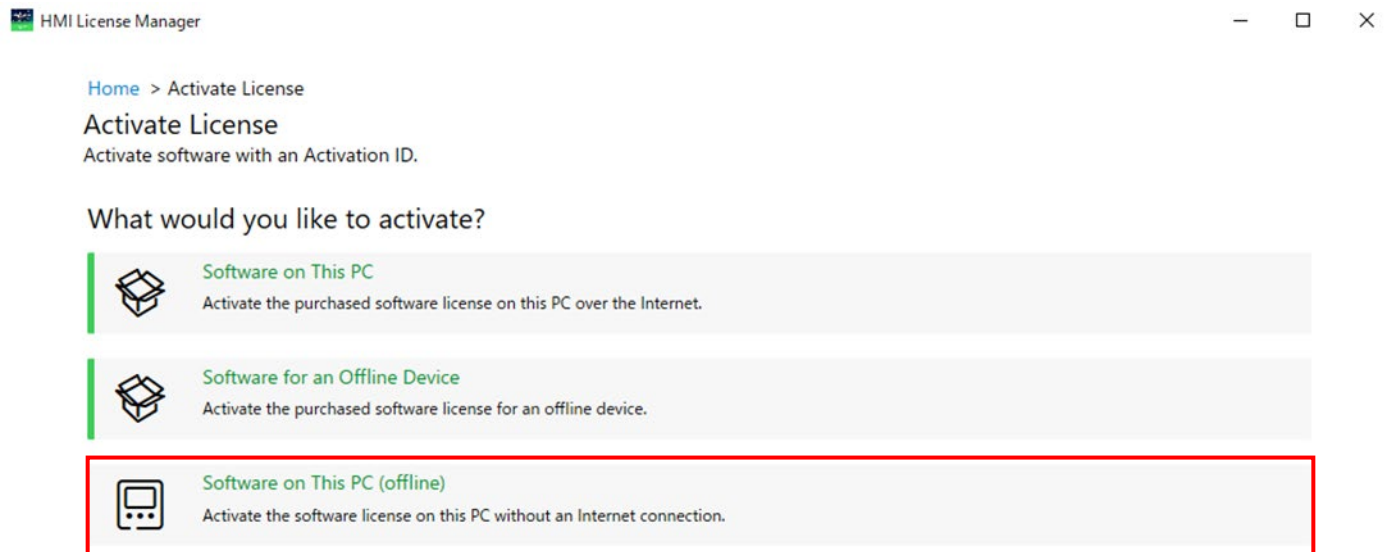
Software on This PC (offline)

Activate the software license on this PC without an Internet connection.

4-1. Offline Activation

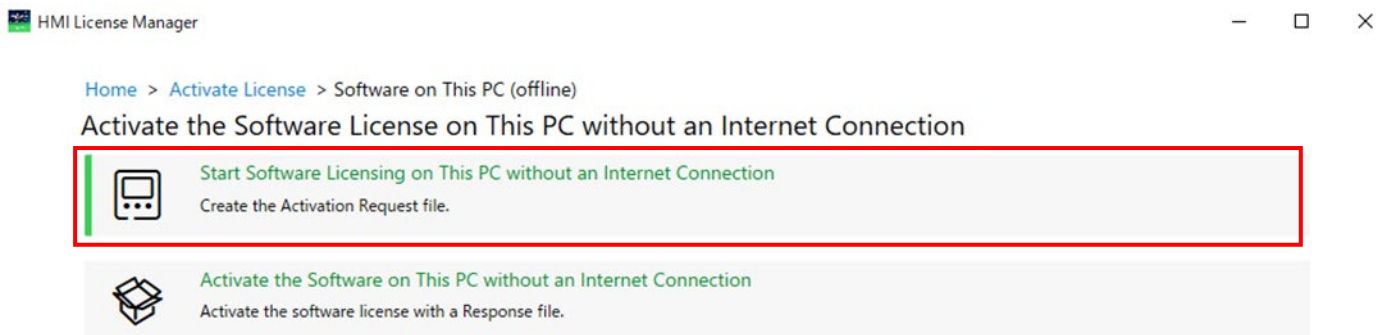
<Action needs to be done by PC1 (Offline) >

Click “Software on This PC (Offline)”



4-1-1. Create Activate Request Information file.

Click “Start Software Licensing on This PC without an Internet Connection”



Copy your Activation ID and click “Create”.

[Home](#) > [Activate License](#) > [Software on This PC \(offline\)](#) > [Start Software Licensing](#)

Create the Activation Request File

Input the Activation ID.

Activation ID

XXX - XXXX - XXXX - 5UKJ - UBWV

Create

Licenses Requested on This PC

Activation ID

“.ARI” file (Activate Request Information file) is created, so save the file.

 UBWV_88A4C2F7A0C3.ARI	2025/05/12 17:36	ARI ファイル	1 KB
---	------------------	----------	------

Also, you can see your license below.

[Home](#) > [Activate License](#) > [Software on This PC \(offline\)](#) > [Start Software Licensing](#)

Create the Activation Request File

Input the Activation ID.

Activation ID

XXX - XXXX - XXXX - 5UKJ - UBWV

Create

Licenses Requested on This PC

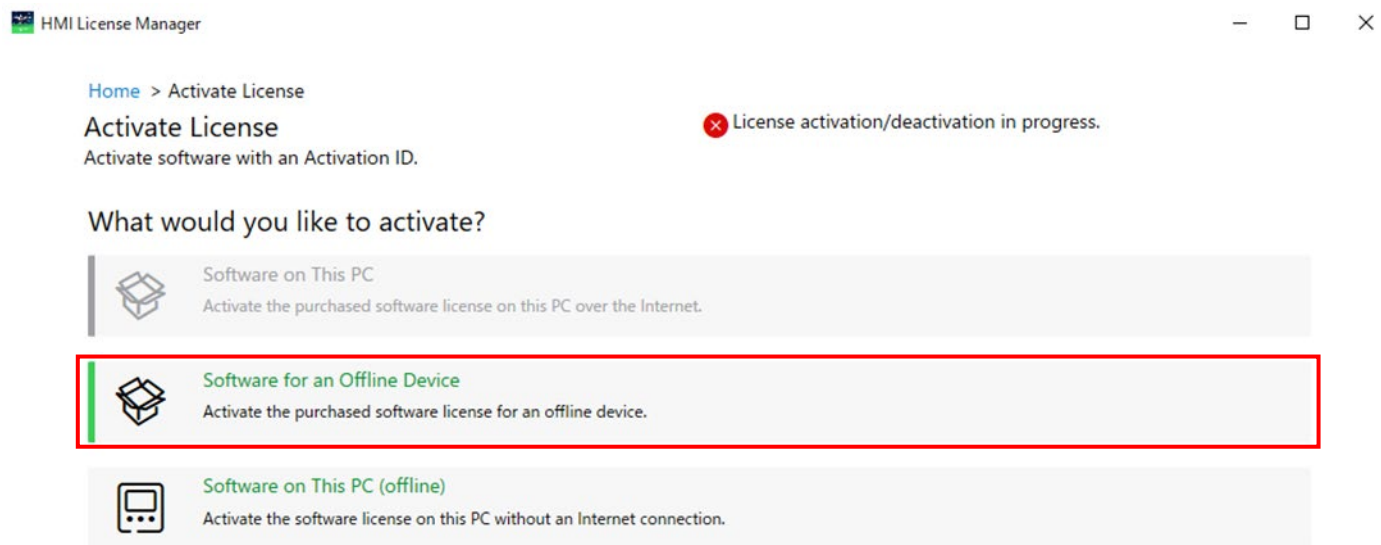
Activation ID
XXX-XXXX-XXXX-5UKJ-UBWV

4-1-2. Create “Activation Answer Information File” (.AAI)

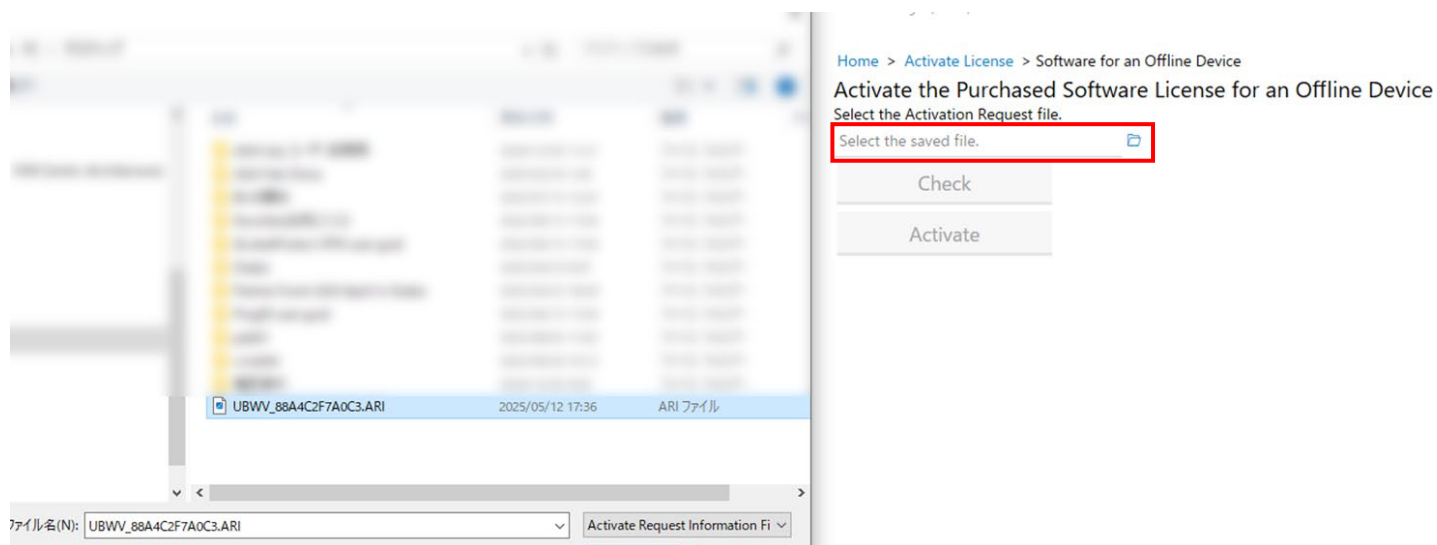
<Action needs to be done by PC2 (Online) >

Run HMI License Manager, Select “Activate License.”

Select “Software for an Offline Device”



Select your Activate Request Information file (.ARI) from the folder icon.



Click “Check” and then “Activate”

Save the .AAI file (Activate Answer Information file).

Home > Activate License > Software for an Offline Device

Activate the Purchased Software License for an Offline Device

Select the Activation Request file.



Status of the Activation ID

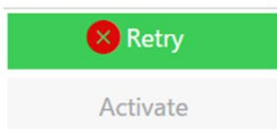
Name GP-Pro EX
Version *
Tier -
Part Number PFXEXBT5SA
License Model Permanent
Volume 1
Status 0 / 1 Available

✂ If you failed to create the Activation Answer Information file (.AAI), you will see this screen so please check your selected file or condition.

Home > Activate License > Software for an Offline Device

Activate the Purchased Software License for an Offline Device

Select the Activation Request file.



Check was unsuccessful.

Unable to check the Activation ID. Possible reasons:
-Failed to connect to the license server.
-Invalid file is selected.

To check the activation ID availability, please visit to mySchneider website.

The screenshot shows the 'license' section of the mySchneider website. It displays a summary of 7 licenses: 0 Expired, 0 Expiring soon, and 7 Unused or invalid. Below this is a search bar with fields for 'Product / Part Number', 'Activation ID (License Key)', 'Entitlement ID', 'Product Range', and 'Installer Email'. A table lists the licenses with columns for 'product', 'Activation ID (License Key)', 'expiration date', 'Usage Rights', 'Group', and 'Action'. The table shows three licenses: 'GP-Pro EX Windows RunTime, PF IPC' (Waiting for user activation), 'GP-Pro EX V5.0 single license' (Active perpetual), and 'GP-Pro EX V5 UPGRADE lic. (3 seats)' (Waiting for user activation). The 'expiration date' and 'Usage Rights' columns are highlighted with a red box.

product	Activation ID (License Key)	expiration date	Usage Rights	Group	Action
GP-Pro EX Windows RunTime, PF IPC GP-Pro EX V5 PFXEXWGT5SA - Version 5 Complete		Waiting for user activation	1 / 1		⋮
GP-Pro EX V5.0 single license GP-Pro EX V5 PFXEXBT5SA - Version 5 Complete		Active perpetual	1 / 1		⋮
GP-Pro EX V5 UPGRADE lic. (3 seats) GP-Pro EX V5		Waiting for user activation	3 / 3		⋮

4-1-3. Activate the License on an offline PC.

<Action needs to be done by PC1 (Offline) >

Run HMI License Manager, select "Activate License."

Select "Software on This PC (offline)"

[Home](#) > [Activate License](#)

Activate License

Activate software with an Activation ID.

✖ License activation/deactivation in progress.

What would you like to activate?



Software on This PC

Activate the purchased software license on this PC over the Internet.



Software for an Offline Device

Activate the purchased software license for an offline device.



Software on This PC (offline)

Activate the software license on this PC without an Internet connection.

Select “Activate the Software on This PC without an Internet Connection”

[Home](#) > [Activate License](#) > [Software on This PC \(offline\)](#)

Activate the Software License on This PC without an Internet Connection



Start Software Licensing on This PC without an Internet Connection

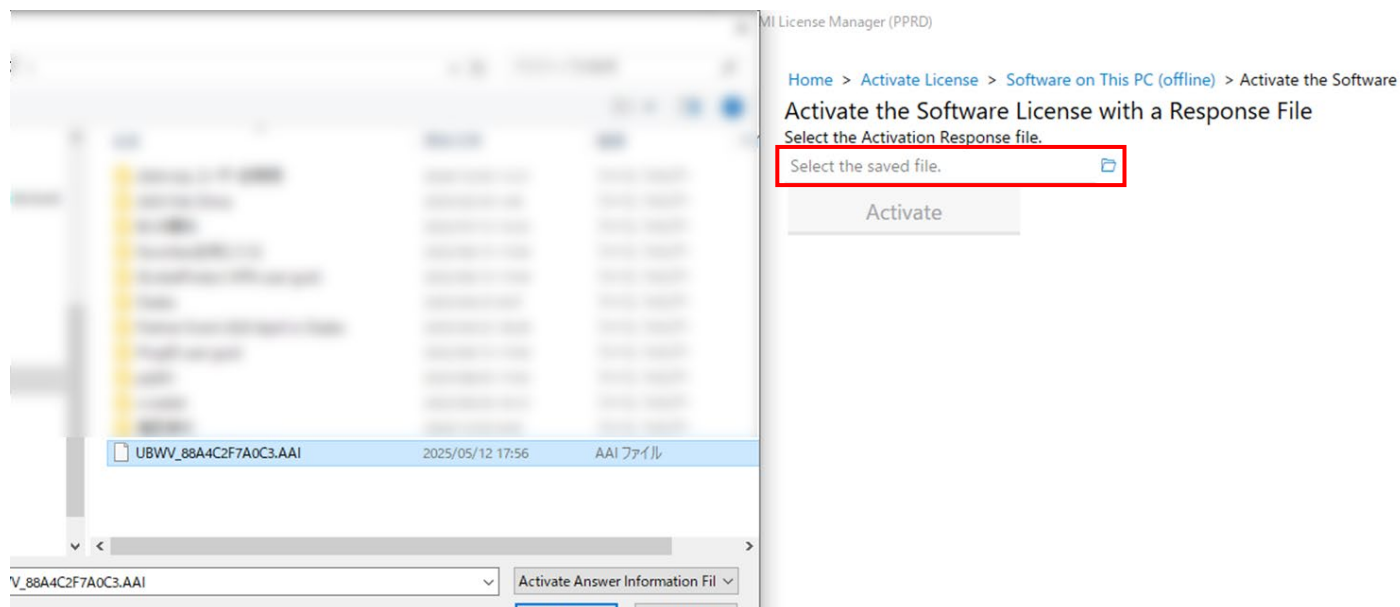
Create the Activation Request file.



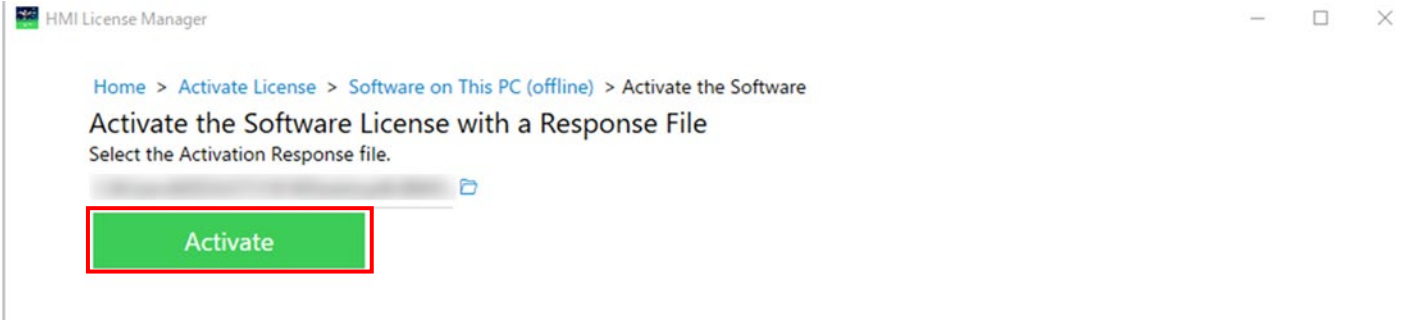
Activate the Software on This PC without an Internet Connection

Activate the software license with a Response file.

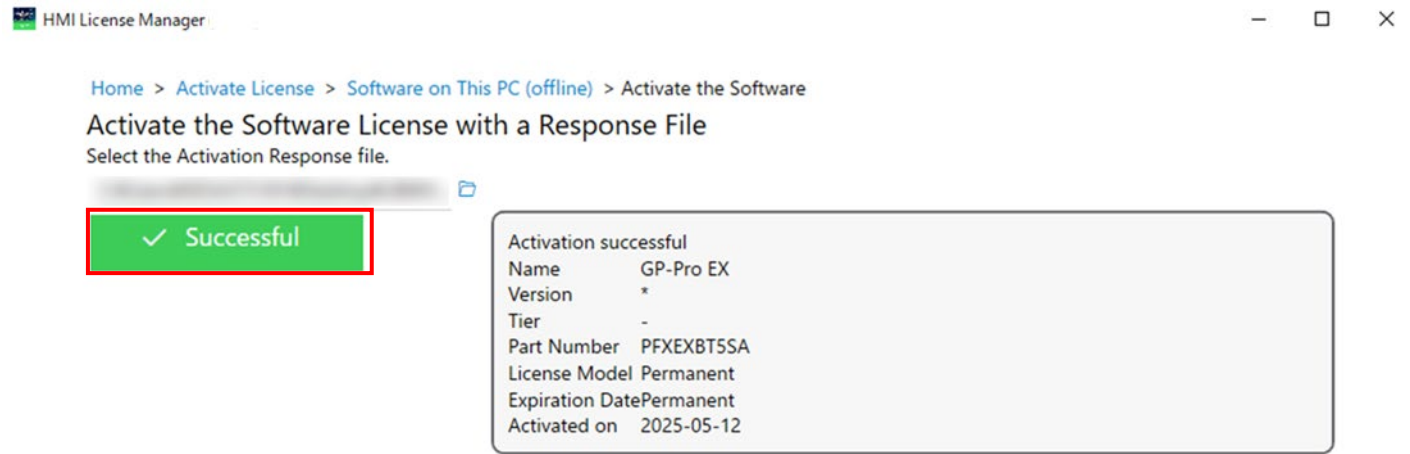
Select your Activate Answer Information file (.AAI) from the folder icon.



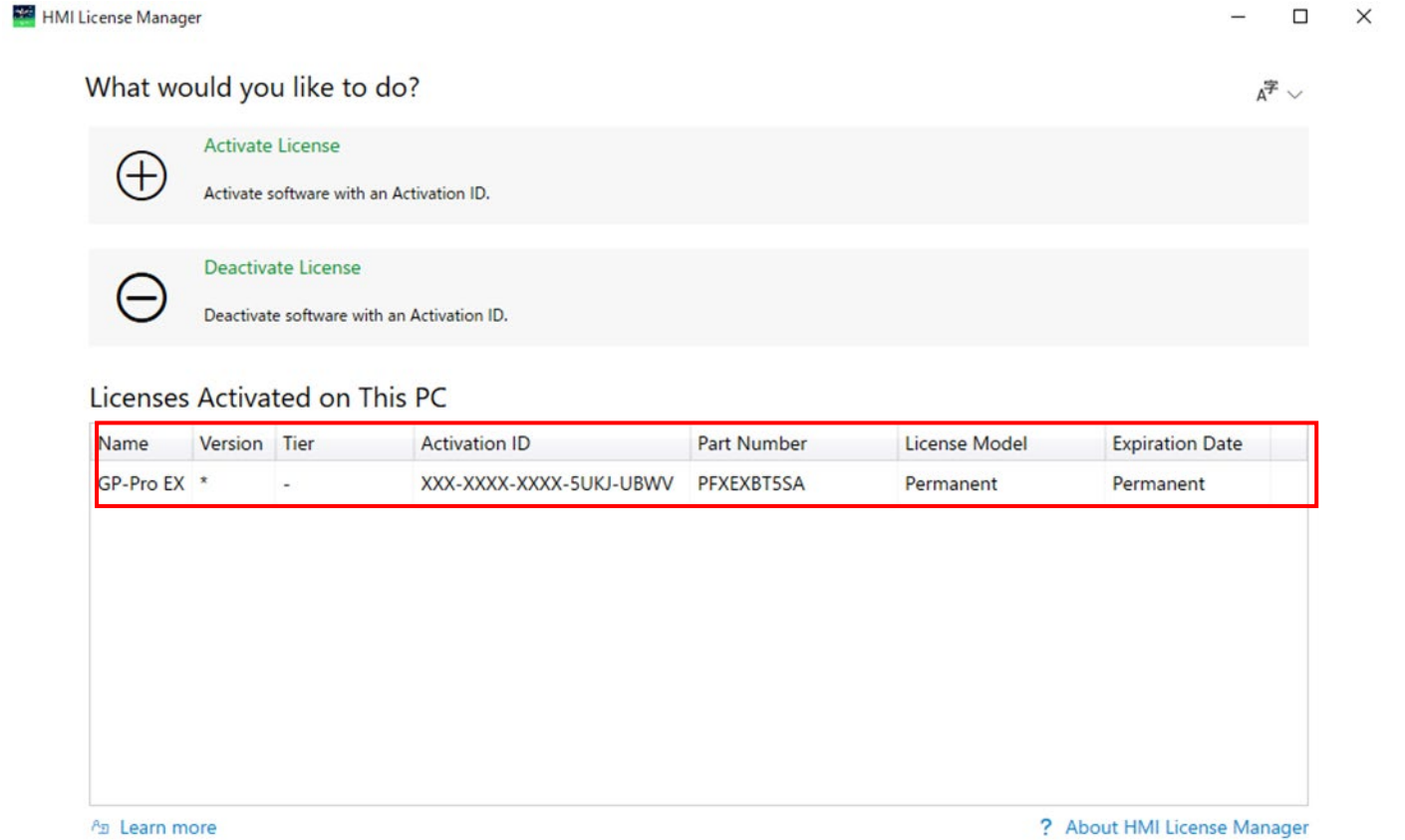
Click “Activate”



Now the license has been successfully activated.



You can now see your active license from below Home Screen.



※ If the activation is failed, you will see this screen so please check the condition.

[Home](#) > [Activate License](#) > [Software on This PC \(offline\)](#) > Activate the Software

Activate the Software License with a Response File

Select the Activation Response file.



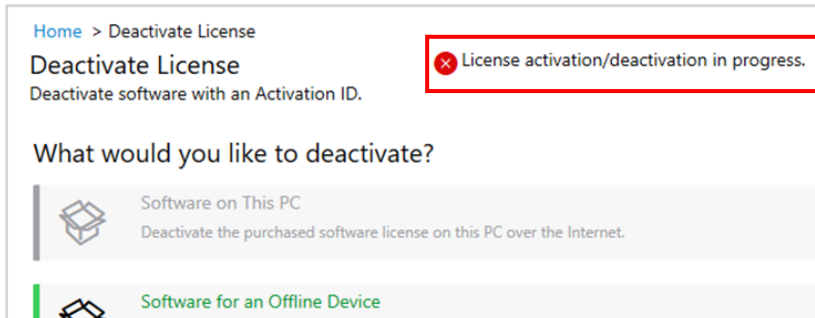
Activation Failed.

Unable to activate the license. Possible reasons:

- There is a license that has not been deactivated.
- The Activation ID was not requested for activation.
- The Activation ID was not requested by this PC.
- The Activation ID has no more licenses left to activate.
- Invalid file selected.

Important Information

- To start the HMI License Manager, you must have administrator privileges. If a user other than the administrator starts the license manager, a dialog box will appear prompting you to become the administrator.
- If UWF is enabled, the HMI License Manager cannot be started. Please disable it and try starting it again.
- During offline activation/deactivation, online activation/deactivation cannot be performed. The following warning message is displayed in the HMI



- License Manager on the offline PC, and online-related buttons cannot be clicked until the offline process is completed.
- There is no limit to the number of times for activations/deactivations.