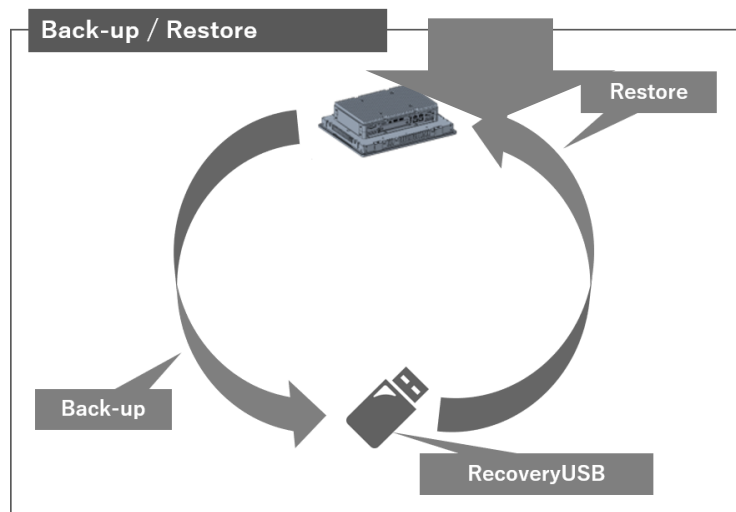
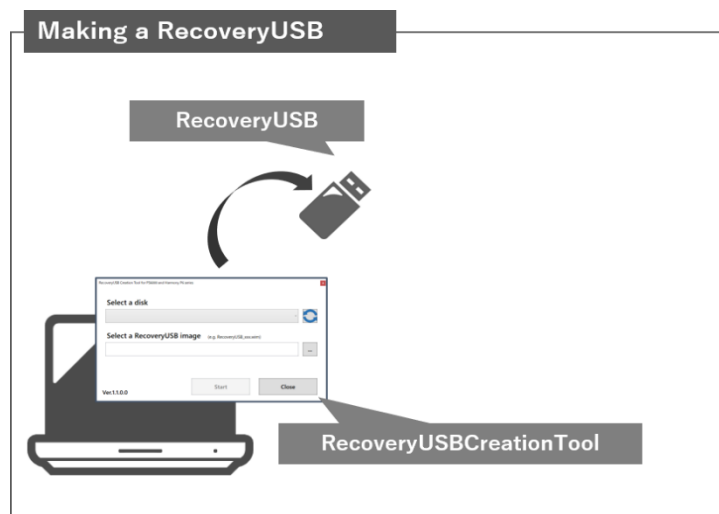


Recovery USB Creation Tool


Title	Recovery USB Creation Tool
Supported OS	Windows 10 64bit (Build version is 1809 or more.)
Description	<p>This tool is designed to create a recovery USB.</p> <p>The recovery USB created can be used to back up your operating system and restore the image backup into a product.</p> <p>The drive to be backed-up is the C drive only.</p> <p>USB memory size of the recovery USB needs 32GB and over.</p> <p>For how to use the recovery USB, refer to "Backup" and "System Recovery" in the user manual.</p> <p>Caution:</p> <p>All data in the USB memory to be created as a recovery USB will be lost when this tool is executed.</p> <p>It may take ten to twenty minutes to complete the creation.</p> <p>The recovery USB made by Recover USB Creation Tool does not contain a recovery image for the product.</p> <p>The recovery USB created can be used to back up your operating system and restore the backed up image into a product.</p> <p>The image of the backup has to be saved directly under "Other label" in the recovery USB.</p> <p>Refer to the user manual to how to use the recovery USB.</p>
Security Guide	<p>Check a hash value of a download file before use.</p> <p>File name : RecoveryUSB_Ver.4.0_WEB.wim</p> <p>MD5: 40DF08ABF96ABC3A92DD9D8F63672372</p> <p>SHA-1: 0E4B13D8E39F88135BC5AA279A31CD7379E6828F</p> <p>SHA-256: 74E093CD9DAB1D313B940F795BAECD8FE7C7DCECD714EE9CC1AFE125EDEAA8EF</p>

Structure Image

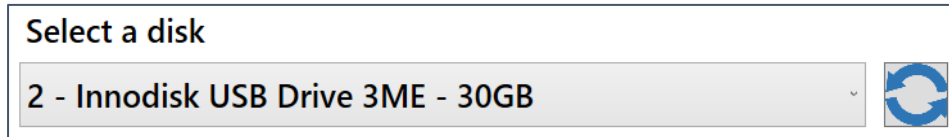


How to use a Recovery USB Creation Tool

1. Disconnect all connected devices, and then insert the recovery USB to the product.
2. Execute "RecoveryUSBCreationTool.exe".
3. Select the USB device name of the recovery USB from "Select a disk".

If connecting or disconnecting the USB memory after executing the exe file, click the update button  to refresh the pull-down list.

e.g.



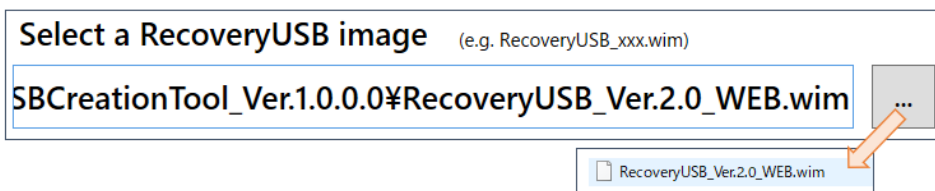
4. Click the icon on the right in "Select a RecoveryUSB image", and select the wim file. The wim file is the image data of the recovery USB.

Note:

Restore and backup duration depends on your device performance.

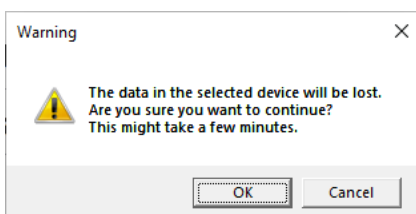
Please use high performance USB or SSD for faster restore and backup.

e.g.



5. Click Start.
6. Read the message in "Warning Message", and click OK.

This may take a few minutes.



7. The recovery USB has been created.

