



Replacement Guidebook (Software)

The 3rd Edition, September 2022

Update History

Date	Edition	Updated Slide	Description
2020/11/12		-	Newly created
2021/12/15	2	10	Add more information on the Notes of using the Convert Resolution.
2022/09/08	3		Add "Replacement of GP-Pro EX to BLUE Open Studio"

Preface

For the supported software for each hardware, see “About Software compatibility” in “Replacement Guidebook (Hardware)”.

Agenda

1

[Replacement of GP-Pro EX to GP-Pro EX](#)

2

[Replacement of GP-Pro EX to BLUE](#)

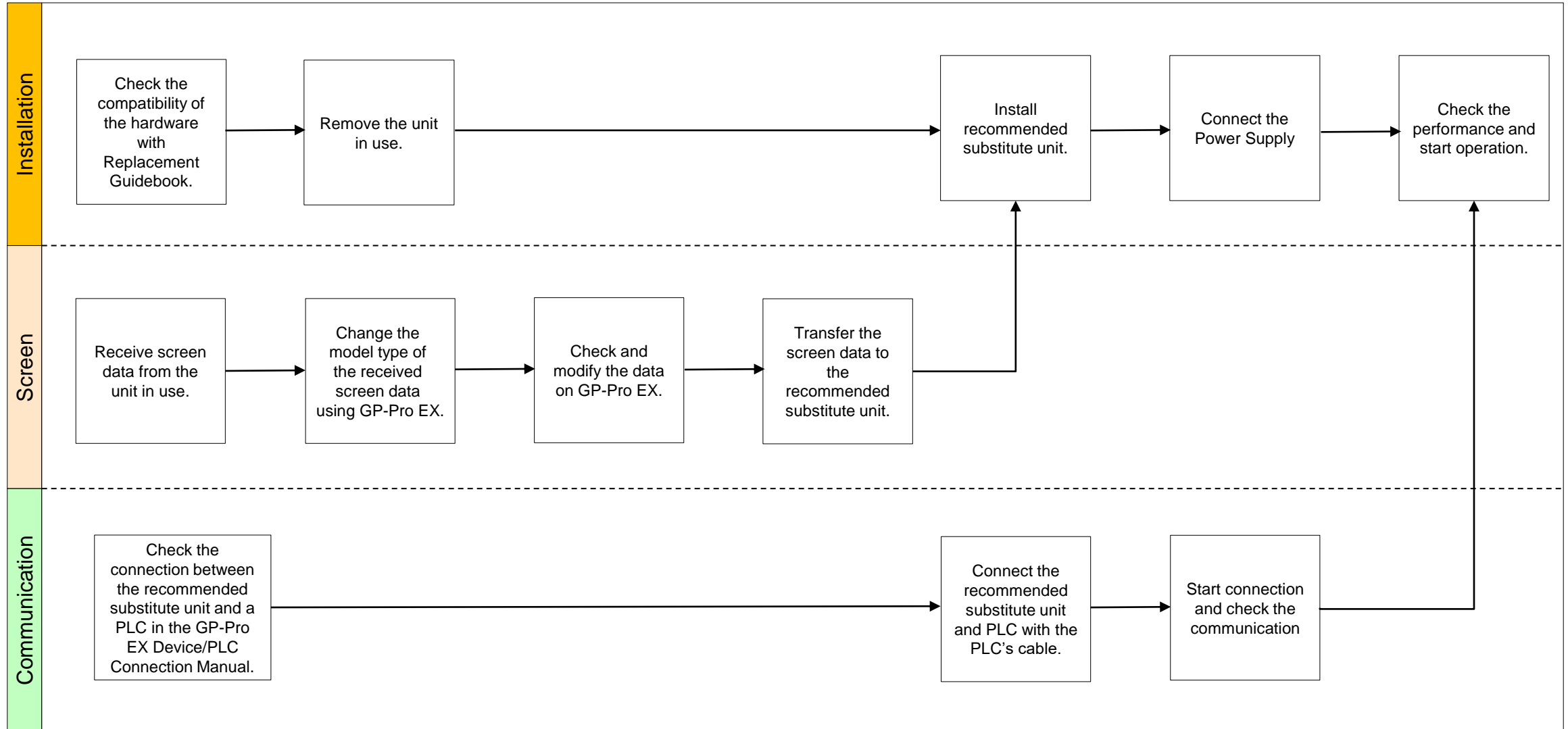
3

[Replacement of GP-Pro EX to BLUE Open Studio](#)

1. Replacement of GP-Pro EX to GP-Pro EX

Replacement Procedure

–Work Flow–



Replacement Procedure

–Preparation–

Requirements for receiving screen data from the unit in use *1	<p>PC in which GP-Pro EX Transfer Tool is installed. *2</p> <p>A USB transfer cable : CA3-USBCB-01(Type A - Type A) A USB data transfer cable : ZC9USCBMB1(Type A - Type mini B) A commercial USB cable (Type A - Type mini B) ※It's also possible to send/receive a screen via SD card, USB storage device or Ethernet.</p>
Requirements for converting screen data of the unit in use and transferring the converted data to Recommended substitute unit.	<p>PC with GP-Pro EX installed *3</p> <p>Transfer Cable (The following Cables can be used.) A USB transfer cable : CA3-USBCB-01(Type A - Type A) A USB data transfer cable : ZC9USCBMB1(Type A - Type mini B) A communication USB cable (Type A - Type mini B) ※It's also possible to send/receive a screen via SD card, USB storage device or Ethernet.</p>

*1: This step is required if screen data is saved only in the GP unit, not in any other device.

*2: Please use the same or higher version of the software used when creating screens on the old model. If you don't know the software version, we recommend that you use the latest one. You can download the latest transfer tool from our website.

*3: Please check the compatible version of each model from our website. (https://www.proface.com/en/product/soft/gpproex/supported_models)

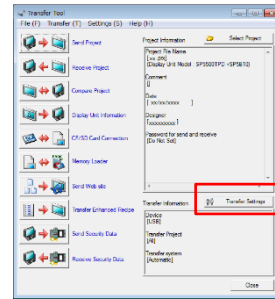
Replacement Procedure

–Receive Screen data from the model in use (GP-Pro EX)–

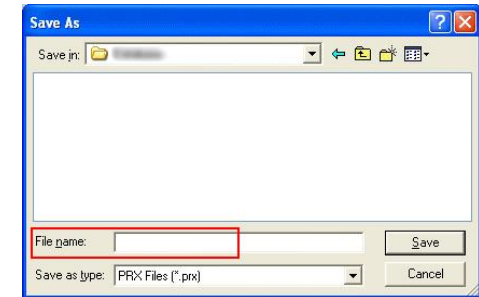
In this section, we will introduce how to receive screen data with a USB transfer cable as an example. If you have backed up screen data, this step is unnecessary, skip to the next section.

1. Connect your PC and the model in use with a USB transfer cable. If the driver of the cable has not been installed on your PC yet, a dialog box will appear. Please follow the instructions.

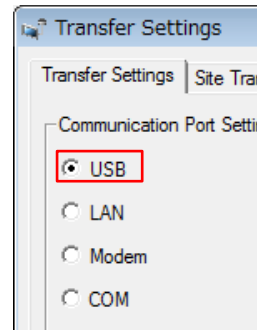
2. Start the Transfer Tool of GP-Pro EX.



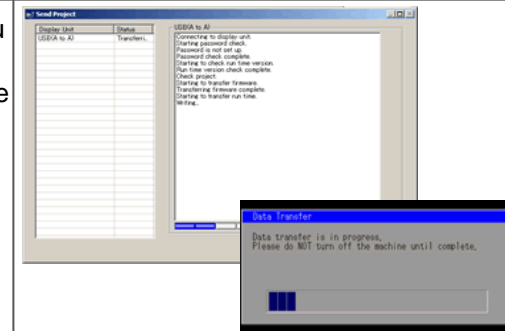
5. Click [Receive Project], and the following dialog box will appear. Specify a place to save the received data in and a project file name, and then click [Save] to start transfer.



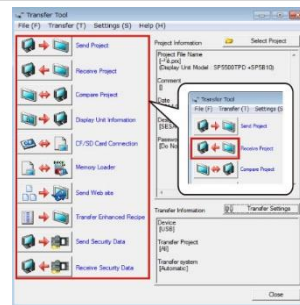
3. Make sure that the [Device] in the “Transfer Settings Information” is set to [USB]. If not, click the [Transfer Setting] button to open the “Transfer Setting” dialog box. Select [USB] in the Communication Port Settings field and click [OK].



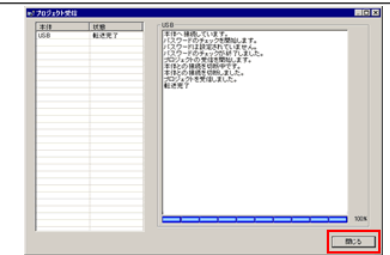
6. The following dialog box appears during transfer and you can check the communication status. (The display unit enters the Transferring mode and communication with the device such as a PLC is terminated.)



4. Start GP-Pro EX Transfer Tool and click the [Receive Project] button.



7. When transfer is completed, the status displayed in the dialog box will change from [Transferring] to [Complete Transfer]. Click [Close] to close the dialog box.



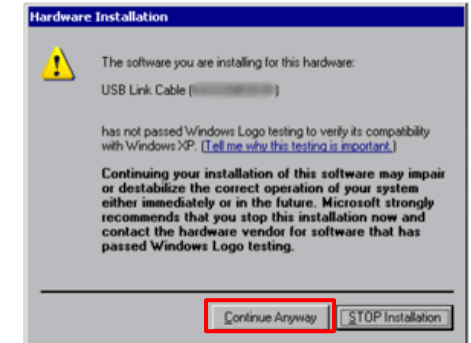
8. Close the Transfer Tool.

Replacement Procedure

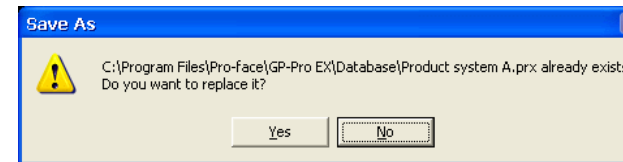
–Receive Screen data from the model in use (GP-Pro EX)–

NOTES

1. The “Hardware Installation” dialog box as shown on the right may appear during installing the USB driver depending on the security level of Windows®. Click [Continue Anyway] to start installing the driver. When installation is completed, click [Finish].



2. When the file already exists, a window will appear asking if you want to overwrite the file.

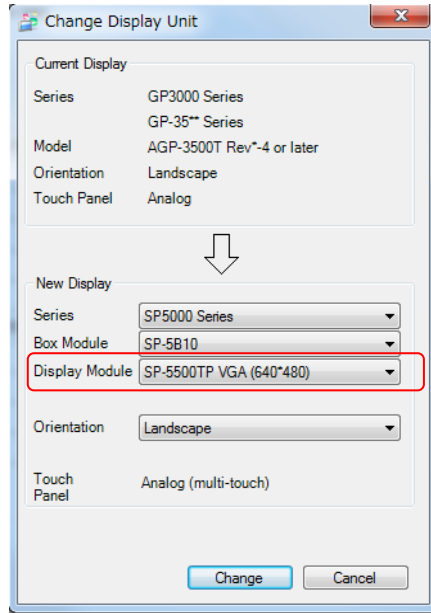


3. When receiving a project file that uses SD card/USB memory data such as Recipe Function (CSV data), the following dialog box will appear during the transfer. Please specify where to save the data. Click [OK] to return to the [Receive Project] dialog box and complete the transfer.



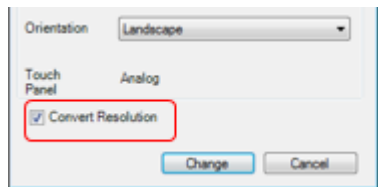
Replacement Procedure

–Change model to recommended substitute unit (GP-Pro EX)–



The Display Module can be Changed on the “Project” -> “System Settings” -> “Change Display Unit” screen of GP-Pro EX.

If you check on [Convert Resolution] when changing the Display Unit type (as shown below), you can adjust both size and location of the part and the text relative to the display resolution automatically. But please note that their width gets larger due to change of horizontal resolution of the screen area. In this case, confirm their size and location and adjust them if necessary. Please check some examples below.



- A function that requires absolute coordinates. Please adjust the settings manually.
 - **Global window**
 - **Position Animation**
- Due to font size and resolution restrictions, manual changes may be required. Please resize them if needed
 - **Font:** In the case of using Standard font, the size will be smaller. You can improve by using Stroke font or Image font.
 - **Objects**
 - **Parts**
 - **Images**
 - **Alarm parts**
- Position may differ from the original project. Please check the coordinate of the window and adjust if needed.
 - **Window display**

Replacement Procedure

–Transfer screen data to recommended substitute unit (GP-Pro EX)–

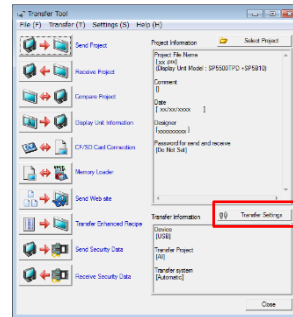
In this section, we will introduce how to transfer screen data with a USB transfer cable as an example.

1. Connect your PC and the recommended substitute unit with a USB transfer cable. If the driver of the cable has not been installed on your PC, a dialog box will appear. Please follow the instructions.

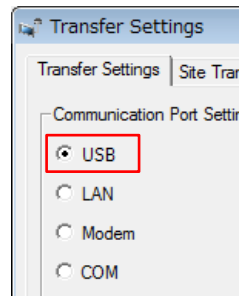
2. Turn on the power of Recommended substitute unit. The “Initial Start Mode” screen will appear on the display unit. After transferring a project file once, this screen will not appear again.



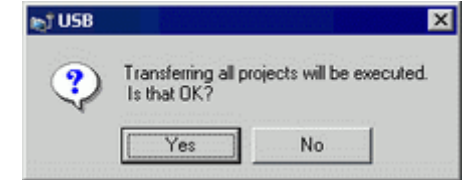
3. On the GP-Pro EX's State Toolbar, click the [Transfer Project] icon to open the Transfer Tool. To transfer a different project file, click the [Select Project] button and select a project file.



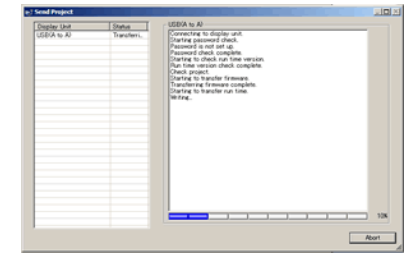
4. Make sure that the [Device] in the “Transfer Settings Information” is set to [USB]. If not, click the [Transfer Setting] button to open the “Transfer Setting” dialog box. Select [USB] in the Communication Port Settings field and click [OK].



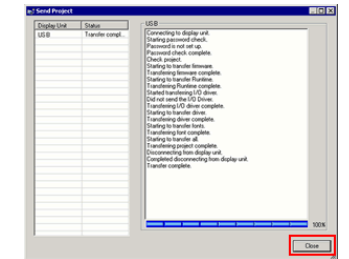
5. Click [Send Project] to start transfer. When the following dialog box appears, click [Yes]. This dialog box doesn't appear when the same project file is sent again.



6. The following dialog box appears during transfer and you can check the communication status. (The display unit enters the Transferring mode and communication with the device such as a PLC is terminated.)



7. When transfer is completed, the status displayed in the dialog box will change from [Transferring] to [Complete Transfer]. Click [Close] to close the dialog box.



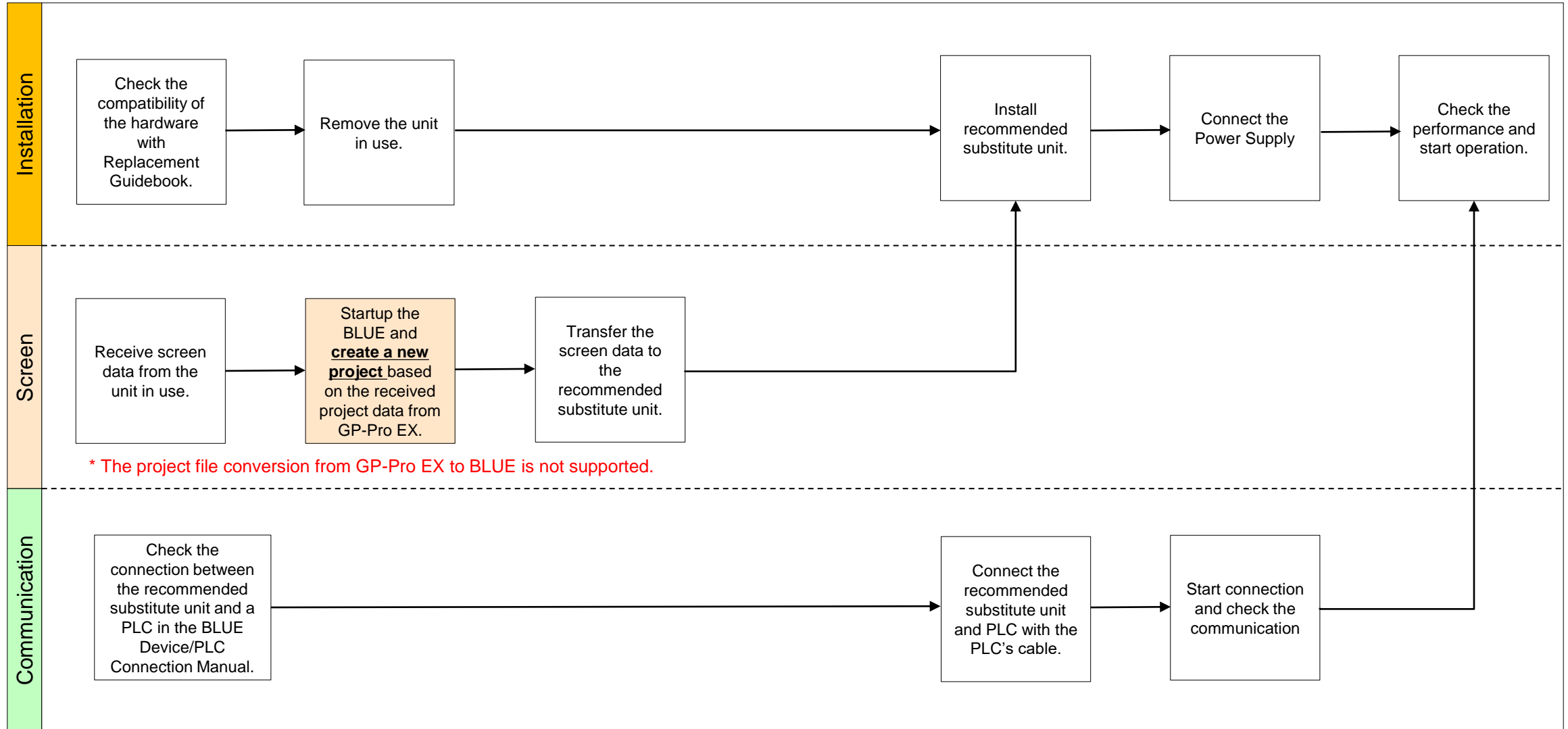
8. Close the Transfer Tool

9. Click the [X] mark on top right of the screen or [Project]->[Exit] to close GP-Pro EX.

2. Replacement of GP-Pro EX to BLUE

Replacement Procedure

–Work Flow–



Replacement Procedure

–Preparation–

Requirements for receiving screen data from the unit in use ^{*1}

PC in which GP-Pro EX Transfer Tool is installed. ^{*2}

A USB transfer cable : CA3-USBCB-01(Type A - Type A)
A USB data transfer cable : ZC9USCBMB1(Type A - Type mini B)
A commercial USB cable (Type A - Type mini B)
※It's also possible to send/receive a screen via SD card, USB storage device or Ethernet.

Requirement for creating new project and transferring the data to Recommended substitute unit.

PC with BLUE installed. ^{*3}

Transfer Cable (The following Cables can be used.)
A USB data transfer cable (for SP5000/GP4100) : ZC9USCBMB1(Type A - Type mini B)
A commercial USB mini B transfer cable (for SP5000/GP4100)
A USB transfer cable (for ST6000/STM6000) :PFXZUSCBMB2(Type A - Type micro B)
A commercial USB micro B transfer cable (for ST6000/STM6000)
※It's also possible to send/receive a screen via SD card, USB storage device or Ethernet.

^{*1}: This step is required if screen data is saved only in the GP unit, not in any other device.

^{*2}: Please use the same or higher version of the software used when creating screens on the old model. If you don't know the software version, we recommend that you use the latest one. You can download the latest transfer tool from our website.

^{*3}: Please check the compatible version of each model from below.

Series	Product Name	Model Number	Supported version
SP5000	SP-5B10 Power BOX	PFXSP5B10	BLUE V.3.0 or later
	SP-5B90 Xtreme Box	PFXSP5B90	BLUE V.3.1 SP1 or later
	SP-5B00 Standard Box	PFXSP5B00	BLUE V.3.1 SP1 or later
ST6000	ST-6*00WA	PFXST6*00WAD	BLUE V.3.1 or later
STM6000	STM-6*00WA	PFXSTM6*00WAD	BLUE V.3.1 SP1B or later
GP4100	GP-411*T	PFXGP411*T2D	BLUE V.3.0 or later
Pro-face IPC, PC/AT	-	-	BLUE V.3.0 or later

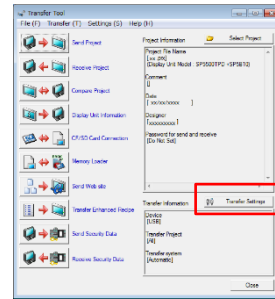
Replacement Procedure

–Receive Screen data from the model in use (GP-Pro EX)–

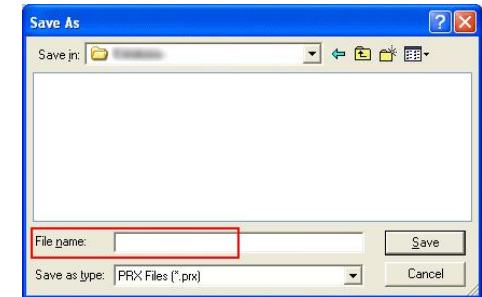
In this section, we will introduce how to receive screen data with a USB transfer cable as an example. If you have backed up screen data, this step is unnecessary, skip to the next section.

1. Connect your PC and the model in use with a USB transfer cable. If the driver of the cable has not been installed on your PC yet, a dialog box will appear. Please follow the instructions.

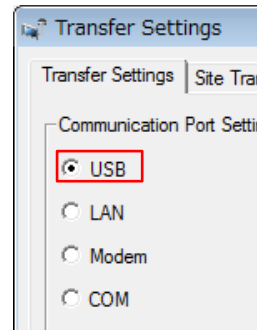
2. Start the Transfer Tool of GP-Pro EX.



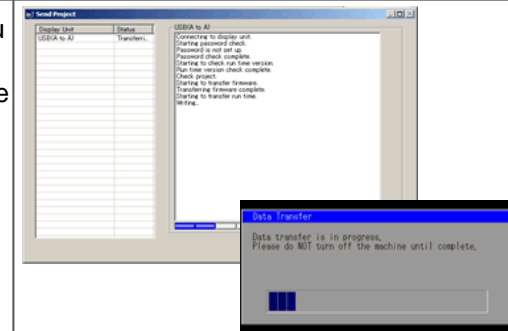
5. Click [Receive Project], and the following dialog box will appear. Specify a place to save the received data in and a project file name, and then click [Save] to start transfer.



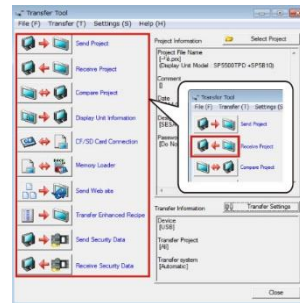
3. Make sure that the [Device] in the “Transfer Settings Information” is set to [USB]. If not, click the [Transfer Setting] button to open the “Transfer Setting” dialog box. Select [USB] in the Communication Port Settings field and click [OK].



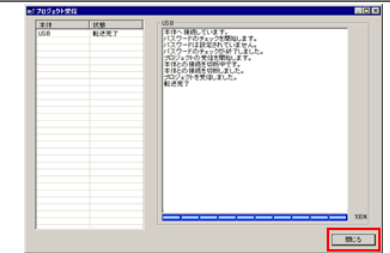
6. The following dialog box appears during transfer and you can check the communication status. (The display unit enters the Transferring mode and communication with the device such as a PLC is terminated.)



4. Start GP-Pro EX Transfer Tool and click the [Receive Project] button.



7. When transfer is completed, the status displayed in the dialog box will change from [Transferring] to [Complete Transfer]. Click [Close] to close the dialog box.

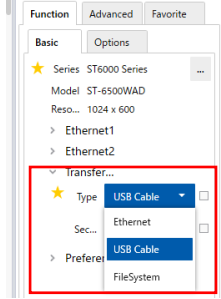

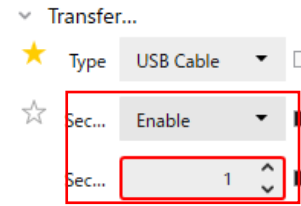
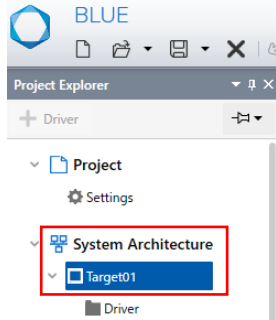

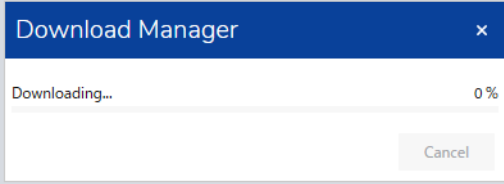


8. Close the Transfer Tool.

Replacement Procedure

–Transfer screen data to recommended substitute unit (BLUE)–

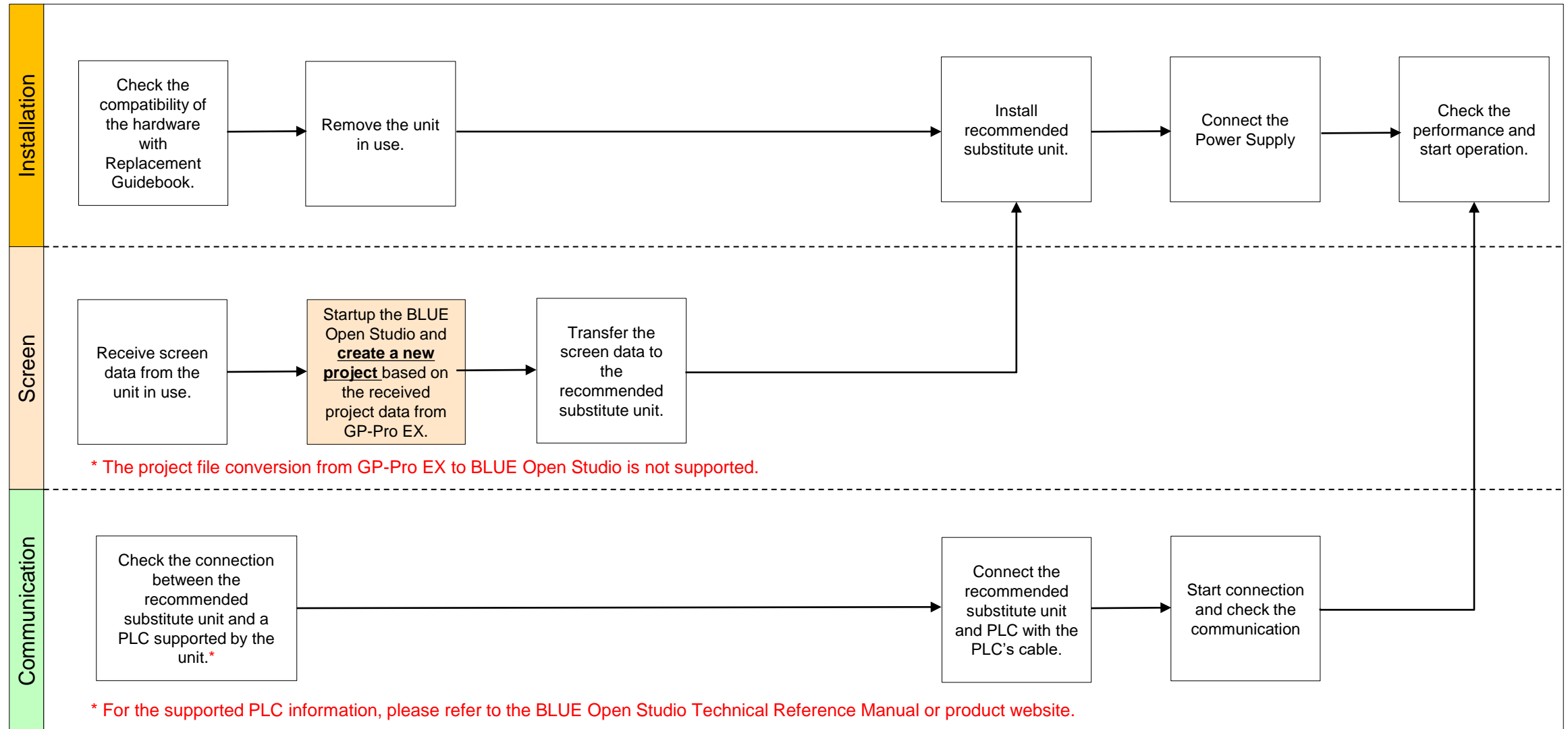
In this section, we will introduce how to transfer screen data with a USB transfer cable as an example.

1. Refer to the GP-Pro EX screen data received in advance and create a new project with BLUE .		5. In Properties window, go to [Function] tab → [Basic] tab and acknowledge that [Type] in [Transfer Method] is [USB Cable].	
2. Connect your PC and the recommended substitute unit with a USB transfer cable. If the driver of the cable has not been installed on you PC, a dialog box will appear. Please follow the instructions.		6. From the [Security Setting] select [Enable] and in the [Security Level] field set the security level required to perform transfer operations. *In the [Security Setting] if [Disable] is selected, the project file is transferred without user authentication.	
3. When the power of the recommended replacement model is turned on, the "Initial transfer mode" screen is displayed. Once you transfer the project, this screen will not be displayed again.		7. On the Application toolbar, click the icon.	
4. Select "Target" from "System Settings" in the BLUE Project Explorer window. If you want to transfer a different project file, you can click the "Open Project" button and select the project file.		8. The Download Manager dialog box displays the status. You will be prompted for a [User name] and [Password]. Enter the user name and password for a user that satisfies the required security level and click [OK].	
		9. Close the Download Manager dialog box after the transfer is complete. After the project has been transferred successfully, the display unit restarts and runs the transferred project.	

3. Replacement of GP-Pro EX to BLUE Open Studio

Replacement Procedure

–Work Flow–



Replacement Procedure

–Preparation–

Requirements for receiving screen data from the model in use *1

PC in which GP-Pro EX Transfer Tool is installed. *2

A USB transfer cable : CA3-USBCB-01(Type A - Type A)
A USB data transfer cable : ZC9USCBMB1(Type A - Type mini B)
A commercial USB cable (Type A - Type mini B)
※It's also possible to send/receive a screen via SD card, USB storage device or Ethernet.

Requirement for creating new project and transferring the data to Recommended substitute unit.

PC with BLUE Open Studio installed. *3

Transfer Cable (The following Cables can be used.)
A USB transfer cable (for ST6000/STM6000) :PFXZUSCBMB2(Type A- Type micro B)
A commercial USB micro B transfer cable (for ST6000/STM6000)
※It's also possible to send/receive a screen via Ethernet.

*1: This step is required if screen data is saved only in the GP unit, not in any other device.

*2: Please use the same or higher version of the software used when creating screens on the old model. If you don't know the software version, we recommend that you use the latest one. You can download the latest transfer tool from our website.

*3: Please check the compatible version of each model from below.

Series	Product Name	Model Number	Supported version
STM6000 Edge Box HMI	STM-6B00	PFXSTM6B00DIOT	BLUE Open Studio 2020 SP2 or later

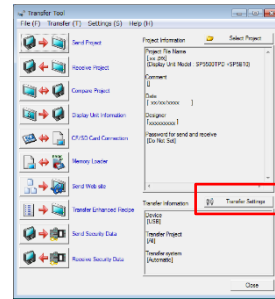
Replacement Procedure

–Receive Screen data from the model in use (GP-Pro EX)–

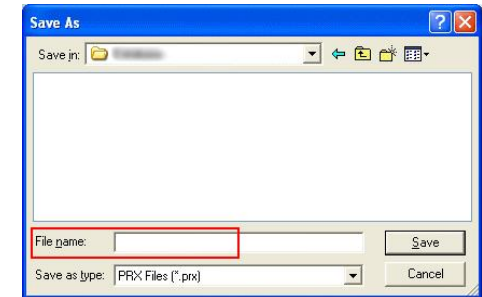
In this section, we will introduce how to receive screen data with a USB transfer cable as an example. If you have backed up screen data, this step is unnecessary, skip to the next section.

1. Connect your PC and the model in use with a USB transfer cable. If the driver of the cable has not been installed on your PC yet, a dialog box will appear. Please follow the instructions.

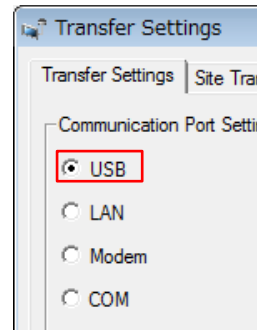
2. Start the Transfer Tool of GP-Pro EX.



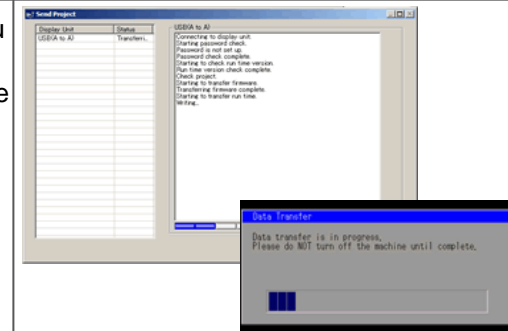
5. Click [Receive Project], and the following dialog box will appear. Specify a place to save the received data in and a project file name, and then click [Save] to start transfer.



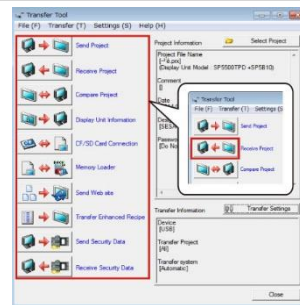
3. Make sure that the [Device] in the “Transfer Settings Information” is set to [USB]. If not, click the [Transfer Setting] button to open the “Transfer Setting” dialog box. Select [USB] in the Communication Port Settings field and click [OK].



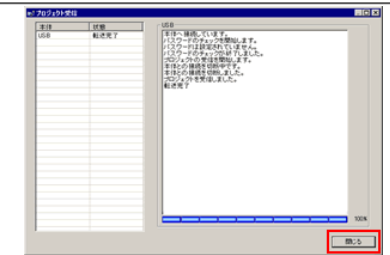
6. The following dialog box appears during transfer and you can check the communication status. (The display unit enters the Transferring mode and communication with the device such as a PLC is terminated.)



4. Start GP-Pro EX Transfer Tool and click the [Receive Project] button.



7. When transfer is completed, the status displayed in the dialog box will change from [Transferring] to [Complete Transfer]. Click [Close] to close the dialog box.



8. Close the Transfer Tool.

Replacement Procedure 1/2

-Transfer screen data to recommended substitute unit (BLUE Open Studio)-

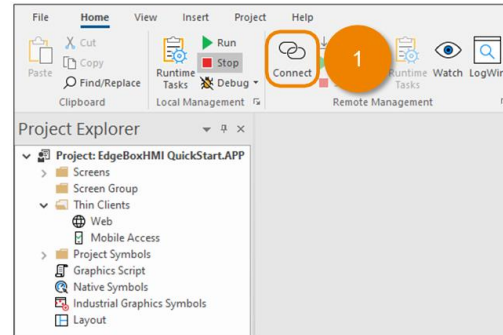
In this section, we will introduce how to transfer screen data with a USB transfer cable as an example.

1. Refer to the GP-Pro EX screen data received in advance and **create a new project with BLUE Open Studio**.

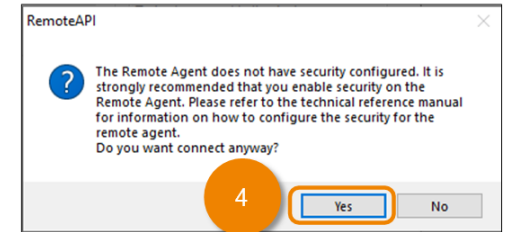
2. Connect your PC and the recommended substitute unit with a USB transfer cable.

Install Runtime Files

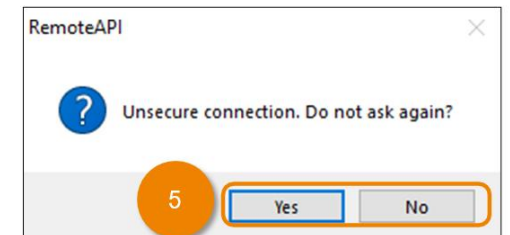
1. On [Home] tab of the ribbon, in [Remote Management] group, click [Connect].



4. If prompted, click [Yes].

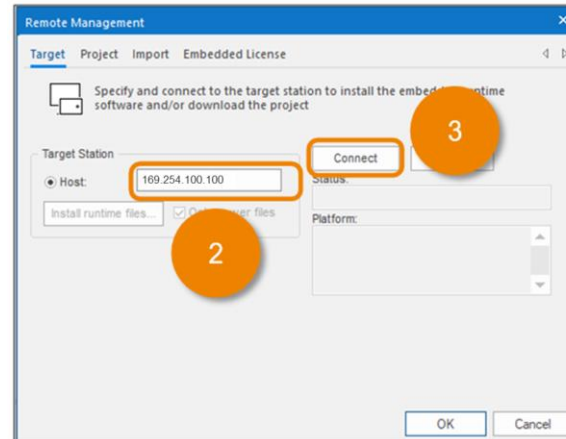


5. If prompted again, answer either [Yes] or [No] as appropriate.

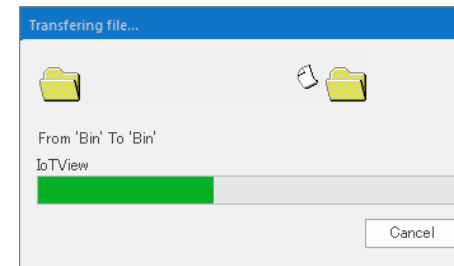


2. Enter IP address of the Edge Box HMI in [Target] tab > [Target Station] > [Host].
e.g. 169.254.100.100 (USB)

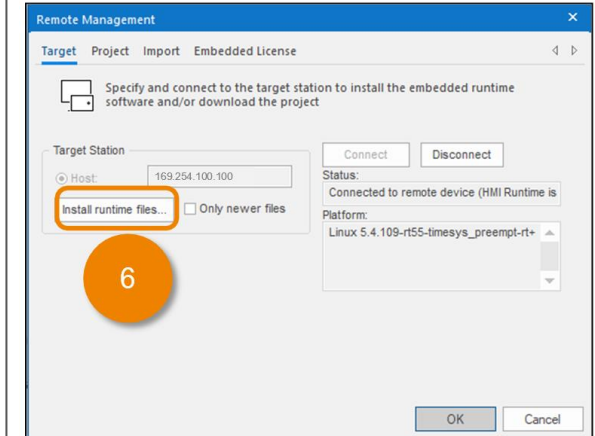
3. Click [Connect].



6. After confirming that the Remote Management tool connected to the Edge Box HMI and its status is displayed, click [Install Runtime Files].



Note: It will take a while to install HMI Runtime.



Continue to the next page >>

Replacement Procedure 2/2

–Transfer screen data to recommended substitute unit (BLUE Open Studio)–

Continue from the previous page.

Transfer Project Files

1. In the [Remote Management] dialog, click the [Project] tab. In the [Local] box, you should see the location of the project that is currently open in your development environment. This is the project that is to be downloaded to the Edge Box HMI.
2. Ensure that the [Status] is “Project is stopped”. If not, click [Stop] and wait for the status to change.
3. Click [Download].
4. After the [Status] has changes to “Files were sent successfully”, click [RUN].
5. Click [OK] to close the dialog window.

