

BLUE Open Studio

Import Tool for PanelMate™

User Guide

BOS-PANELMATE_02
12/2021

Legal Information

The Pro-face brand and any trademarks of Schneider Electric SE and its subsidiaries referred to in this guide are the property of Schneider Electric SE or its subsidiaries. All other brands may be trademarks of their respective owners.

This guide and its content are protected under applicable copyright laws and furnished for informational use only. No part of this guide may be reproduced or transmitted in any form or by any means (electronic, mechanical, photocopying, recording, or otherwise), for any purpose, without the prior written permission of Schneider Electric.

Schneider Electric does not grant any right or license for commercial use of the guide or its content, except for a non-exclusive and personal license to consult it on an "as is" basis. Schneider Electric products and equipment should be installed, operated, serviced, and maintained only by qualified personnel.

As standards, specifications, and designs change from time to time, information contained in this guide may be subject to change without notice.

To the extent permitted by applicable law, no responsibility or liability is assumed by Schneider Electric and its subsidiaries for any errors or omissions in the informational content of this material or consequences arising out of or resulting from the use of the information contained herein.

As part of a group of responsible, inclusive companies, we are updating our communications that contain non-inclusive terminology. Until we complete this process, however, our content may still contain standardized industry terms that may be deemed inappropriate by our customers.

Cybersecurity Best Practices

To help keep your Pro-face products secure and protected, we recommend that you implement the cybersecurity best practices. Following the recommendations may help significantly reduce your company's cybersecurity risk. For the recommendations, refer to the following URL:

<https://www.pro-face.com/trans/en/manual/1087.html>

Safety Information

Important Information

Read these instructions carefully, and look at the equipment to become familiar with the device before trying to install, operate, service, or maintain it. The following special messages may appear throughout this documentation or on the equipment to warn of potential hazards or to call attention to information that clarifies or simplifies a procedure.



The addition of this symbol to a “Danger” or “Warning” safety label indicates that an electrical hazard exists which will result in personal injury if the instructions are not followed.



This is the safety alert symbol. It is used to alert you to potential personal injury hazards. Obey all safety messages that follow this symbol to avoid possible injury or death.

DANGER

DANGER indicates a hazardous situation which, if not avoided, **will result in** death or serious injury.

WARNING

WARNING indicates a hazardous situation which, if not avoided, **could result in** death or serious injury.

CAUTION

CAUTION indicates a hazardous situation which, if not avoided, **could result in** minor or moderate injury.

NOTICE

NOTICE is used to address practices not related to physical injury.

Please Note

Electrical equipment should be installed, operated, serviced, and maintained only by qualified personnel. No responsibility is assumed by Schneider Electric for any consequences arising out of the use of this material.

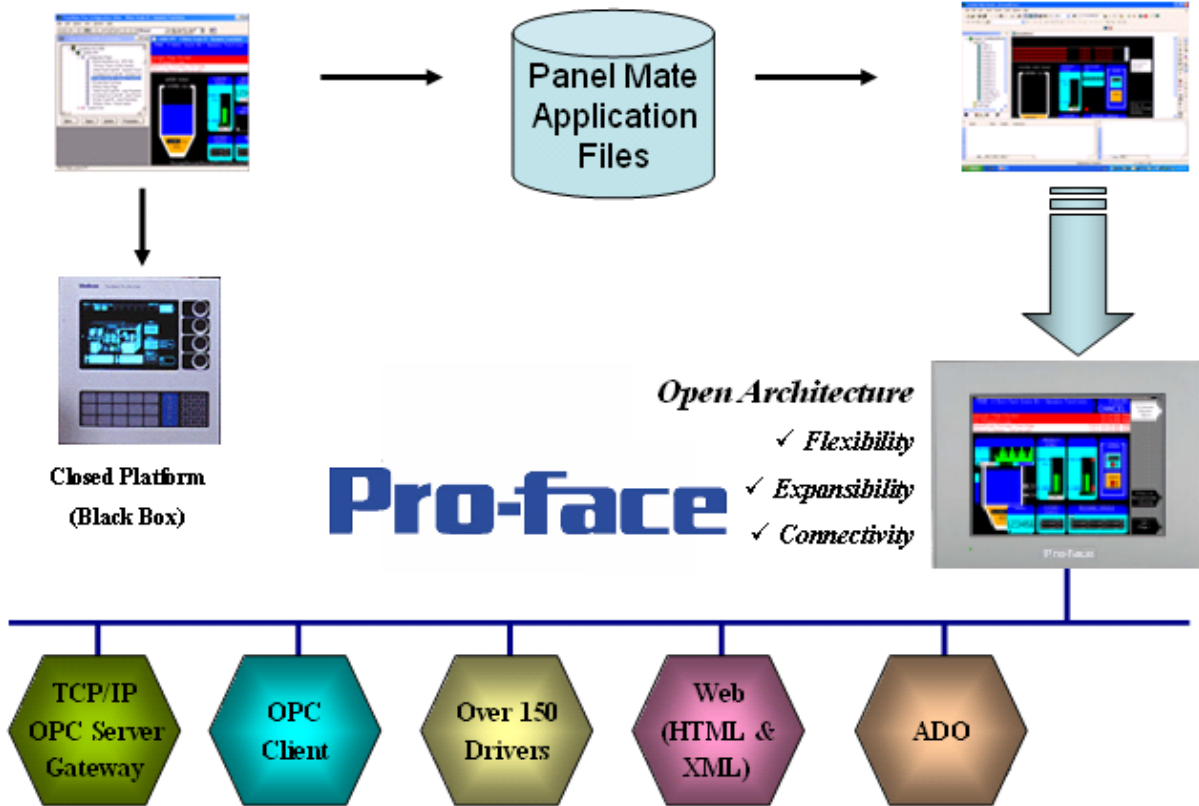
A qualified person is one who has skills and knowledge related to the construction and operation of electrical equipment and its installation, and has received safety training to recognize and avoid the hazards involved.

Contents

Contents	3
Introduction	4
Import Wizard Requirements	6
Import Wizard Procedure	7
Release Notes	10
Graphical Interface	10
Graphical Objects	10
Special Tags for Graphic Interface Support	12
Alarm Configuration.....	13
Security System.....	13
Communication Interface.....	13
Additional Notes	16

Introduction

Pro-face introduces the **BLUE Open Studio Import Tool for PanelMate™** — a powerful, flexible, easy-to-use tool that expands the capabilities of your installed plant floor systems. The **BLUE Open Studio Import Tool** is a fast and intuitive wizard for importing applications created with PanelMate Plus™ software into BLUE Open Studio.



Using the Tool to import PanelMate applications to BLUE Open Studio

Note:

The **BLUE Open Studio Import Tool for PanelMate** is compatible with applications based on the PanelMate Plus Configuration Editor – Version 4.01b0. Applications created with different version of this software may be incompatible with the import wizard.

Note:

The **BLUE Open Studio Import Tool for PanelMate** is an Add-On feature of BLUE Open Studio. Your license needs to support this specific feature; otherwise, you will be unable to use it. Please consult your software vendor for further information.

After importing an application into BLUE Open Studio, you can take advantage of these BLUE Open Studio features:

- **Flexibility:** BLUE Open Studio can run the application on any Microsoft® Windows® platform (8.1, 10, and Server).
- **Expansibility:** You can use the BLUE Open Studio development suite to add functionality to your application in the form of historical data, XML reports, math scripts, etc.
- **Connectivity:** Because the application is running under the BLUE Open Studio runtime, you can take advantage of all connectivity tools embedded in the package, such as:
 - Communication drivers for several protocols from different manufacturers (Modbus, Profibus DP, DeviceNET, ControlNET, Siemens S7 – MPI/PPI, Siemens S5 – RK512, GE-Fanuc SNP/SRTP and many others)
 - OPC client and server interfaces
 - XML and ADO interfaces to exchange data with third-party systems, such as Enterprise Resource Planning (ERP) systems
 - API Toolkits to integrate the application with third-party programs written in any language that supports DLLs (VB, C, C++, and so on)
 - TCP/IP modules for redundant and networked applications
 - Web solution that provides remote access to your application using just a Web browser, through any TCP/IP link (intranet, internet, or dial-up connection)
 - Remote management and debugging tools that allow you to manage (download, upload, run, stop and debug) your application remotely from a development station

The **Import Tool's** greatest advantage is how easy it is to use, which can dramatically reduce the cost and hassle of modernizing the automation systems in your facility.

Import Wizard Requirements

To import a PanelMate application, you need to install the following software on your computer:

1. BLUE Open Studio with the **BLUE Open Studio Import Tool** add-on
2. PanelMate programming software
3. PanelMate database files (.db files that are usually found in c:\pmconfig\model directory)

 **Note:**

You can install and run the BLUE Open Studio project development software on Windows 8.1, Windows 10, and Windows Server operating systems. For more information about system requirements and the installation procedure, see *BLUE Open Studio Help Manual*.

When you install BLUE Open Studio, make sure you select the **BDE for PanelMate Import Wizard** option. It installs the Borland Database Engine (BDE), which is required to read the PanelMate database files.

Import Wizard Procedure

The **Import Tool** provides a simple, straightforward wizard to guide you through the process of importing PanelMate projects into BLUE Open Studio.

Use the following procedure to import the PanelMate application report:

1. Find the BLUE Open Studio program icon either on the desktop or in the Start menu (**Start → All Programs → BLUE Open Studio → BLUE Open Studio**). Right-click the program icon, select **Run as Administrator**, and then enter the appropriate credentials. You need to run the program as an administrator in order to properly load the Borland Database Engine (BDE).
2. In the project development environment, on the **Home** tab of the ribbon, in the **Tools** group, click **Import Wizard**. The *Import Wizard* dialog box is displayed.

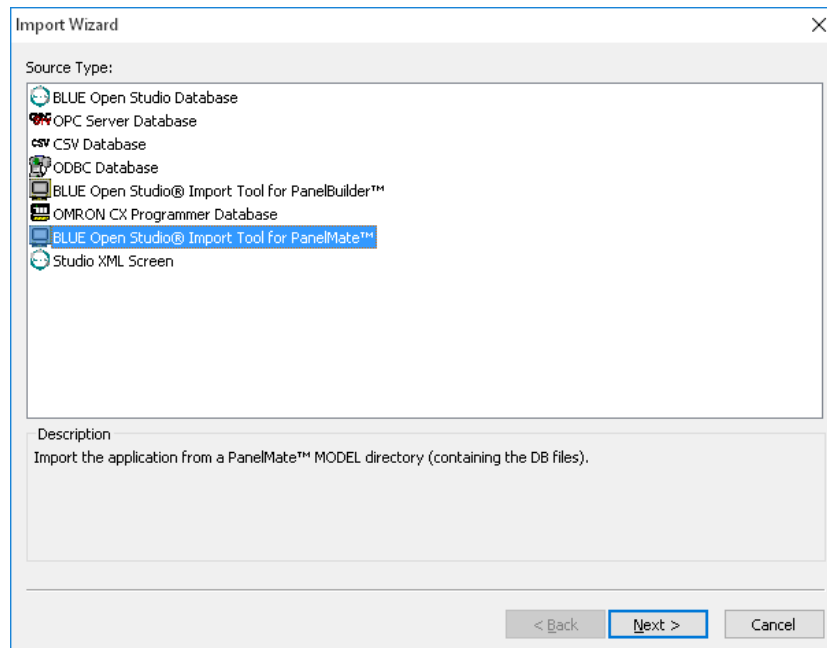


Opening the Import Wizard

Note:

You can use the Import Wizard to import application data from sources other than PanelMate applications. For more information about importing other application types, see *BLUE Open Studio Help Manual*.

3. In the *Import Wizard* dialog box, select **BLUE Open Studio Import Tool for PanelMate** from the **Source Type** list, and then click **Next**.

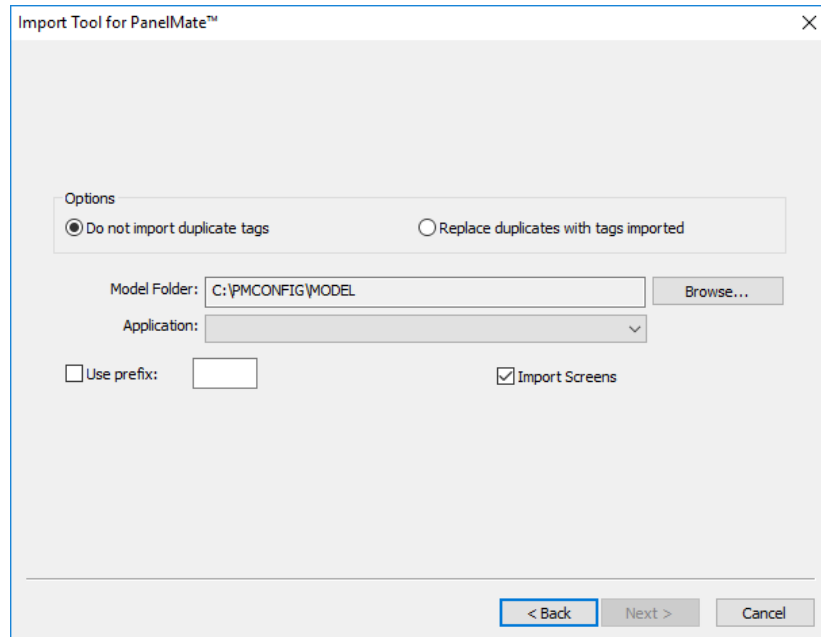


Selecting the Application to Import

Note:

If the BLUE Open Studio license installed in your computer does not support the **BLUE Open Studio Import Tool for PanelMate**, you will be unable to proceed.

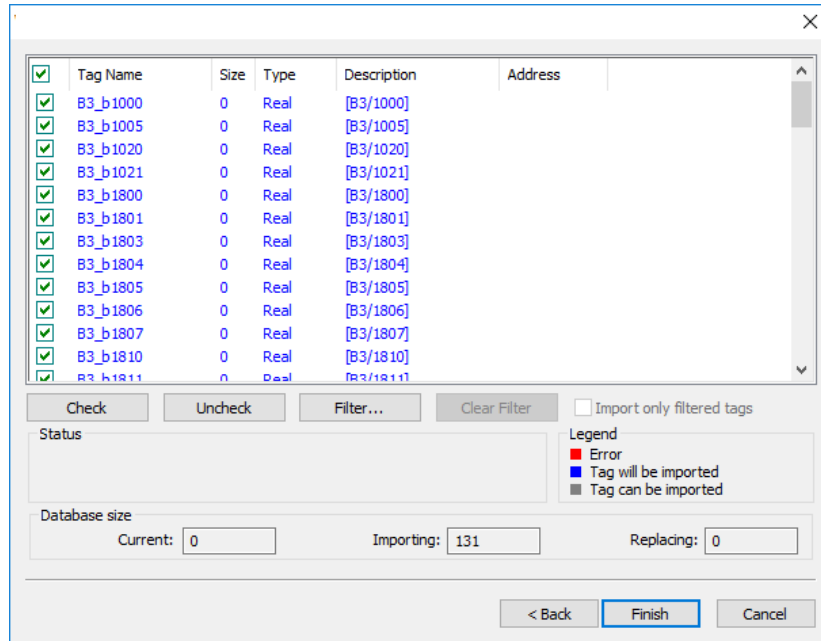
The *Import Tool for PanelMate* dialog box is displayed:



Import Tool for PanelMate Wizard

4. Use this dialog to specify the following import parameters, and then click **Next**.:
 - **Do not import duplicate tags** radio button: Select (enable) this option to stop the *Import Tool for PanelMate Application Wizard* from importing tags with the same name as tags in the current project database.
 - **Replace duplicates with tags imported** radio button: Select (enable) this option if you want the wizard to replace duplicate tag properties in the current project database.
 - **Use prefix** check-box and text box: Select (enable) this option if you want to add a prefix to all imported tags. Because you can import multiple PanelMate applications into a single BLUE Open Studio project, this feature is provided to help you identify where the imported application tags originated and to avoid duplications. Enter a prefix into the text field.
 - **Import Screens** check-box and text field: Clear (disable) this option to stop the wizard from importing the PanelMate application screens.
 - **Model Folder** textbox: This field displays the path and name of the folder where the PanelMate application database is saved. The customary location is **C:\PMCONFIG\MODEL**, in a computer where the PanelMate programming software is installed. Click the **Browse** button to select a different folder.
 - **Application** combo box: If you select a model folder containing a valid PanelMate application database, a list of all applications stored in the database will appear in this combo box. Click on the application you want to import.

The Import Wizard will read the database and then display a new dialog listing all the tags in the report file (similar to the following figure).



List of Tags in the PanelMate Application

The tags are color-coded to indicate which tags will be imported:

- **Blue tags** will be imported. (If you want to exclude a tag, simply click in the check-box to the left of the tag name.)
- **Red tags** will not be imported. (If you enabled the **Do not import duplicate tags** option, the wizard will not import tags that already exist in the project database.)
- **Gray tags** can be imported. Tags become gray in two circumstances:
 - You cleared the check-box to the left of an importable (blue) tag, which changes the blue tag to gray.
 - You have met, or exceeded, the number of tags allowed by your BLUE Open Studio license. For example, if your license allows 1,500 tags, and you would exceed this limit by importing the grey tags, BLUE Open Studio will not allow the wizard to add these tags to the project database.

You can import gray tags (by clicking in the check-box to the left of the tag name), as long as you stay within the number of tags allowed by your BLUE Open Studio runtime license.

5. Click the **Finish** button to import the application according to the import parameters you specified in the previous step.

Release Notes

The **BLUE Open Studio Import Tool** can be enhanced for future versions; this release implements the latest features.

Because BLUE Open Studio is much more powerful than PanelMate, it is possible to work around the items that are not imported by implementing some minor changes in the application. If, however, your application uses one of the features that the import wizard does not import, and you think that you will spend a lot of time implementing this feature in your application, please contact your BLUE Open Studio representative or send an e-mail to your vendor. We will analyze the feasibility of implementing that specific feature.

Graphical Interface

The graphical tools offered by BLUE Open Studio software surpass the capabilities of any other tool available on the market. Also, the same features can be available in several software products but implemented differently in each.

When you import a PanelMate application with the **Import Tool**, you will see that the imported graphical interface may look slightly different from the original one. The text fonts may change, and scrollbars may appear inside some visual components. This occurs because the development philosophy at BLUE Open Studio is to implement Windows standards; PanelMate applications are tied to other very specific hardware and software vendors and standards.

Despite these differences, the **Import Tool** creates a BLUE Open Studio project that closely simulates the look and feel of the PanelMate user interface. After you have imported a PanelMate application, you can enhance its functionality by using the superior graphical components available in BLUE Open Studio.

Graphical Objects

The **Import Tool** converts every page of a PanelMate application into a project screen file named **ScreenXX.src**, where **xx** is the number of the page. The wizard creates additional screens, with names prefixed by **Screen** and **Ctrl**. These screens provide support for the animations of many graphical elements, and need to remain a part of the application.

BLUE Open Studio graphic components are generally more sophisticated than PanelMate elements. In order to reproduce the appearance and behavior of a PanelMate application in the BLUE Open Studio environment, the **Import Tool** translates most PanelMate templates into groups of screen objects. These groups contain animations and VBScript code that enable them to behave like their counterparts in PanelMate. crude

The next table lists all the objects supported by PanelMate, and briefly describes how these objects are mapped to BLUE Open Studio components. Some features of these components are not supported in this release of the **Import Tool**.

PanelMate Plus original object	EcoStruxure Machine SCADA Expert converted object	Limitations, Restrictions and Remarks
Line	Open Polygon	-
Rectangle	Rectangle	-
Ellipse	Ellipse	-
Arc	Open Polygon or Closed Polygon	The "arc" is created with consecutive lines, with a resolution of 5 degrees.
Polygon	Open Polygon or Closed Polygon	-
Text	Text or Bitmap	Text Font: Text in Normal, Double High and Quad fonts are converted to Text objects, with the standard Windows fonts. Text in Graphic fonts are converted to bitmaps.
Symbol	Group of Symbols	-
Bitmap	Bitmap	-
Indicator Template	Group of Symbols	-
Readout Template	Group of Symbols	The object does not change its color to red in an alarm condition.
Bar Template	Group of Symbols	Does not show the blinking notification (ALARM!) indicating the alarm condition
Table Template	-	This object is not converted at all.
Bar Trend Template or Line Trend Template	Group of Symbols	<ul style="list-style-type: none"> ▪ Bar trends and Line Trends are converted into ActiveX controls. ▪ The object does not change its color to red in the alarm condition. ▪ Does not show the blinking notification (ALARM!) indicating the alarm condition
Display Template	Group of Symbols	Graphic, Double High or Quad font types are not supported. During the importing process, these fonts are converted to the available Windows font that best matches the PanelMate font.
Variable-Sized Indicator Template	Group of Symbols	-
Variable-Sized Readout Template	Group of Symbols	The object does not change its color to red in the alarm condition.
Variable-Sized Bar Template	Rectangle + Bargraph	The object does not change its color to red in the alarm condition.
Variable-Sized Display Template	Smart Message	Graphic, Double High or Quad font types are not supported. During the importing process, these fonts are converted to the available Windows font that best matches the PanelMate font.
Variable-Sized Graphic Template	Group of Symbols	-
Variable-Sized Control Button	Pushbutton	-

 **Note:**

Customizations implemented in the Normal font (PanelMate dialog Screen fonts) are ignored by the Import Tool.

Special Tags for Graphic Interface Support

Some auxiliary tags and classes are created to provide support for the dynamics of the screens and graphic elements.

▪ Classes

cControlButton
cControlKeypad
cControlTrend

▪ Tags

PMControlButton[4]
PMControlKeypad
PMControlTrend
PMIsWebClient

 **Note:**

If you remove the Classes and Tags mentioned in this chapter, the application will not function properly.

Alarm Configuration

PanelMate offers two types of alarms: high-low (HiLo) alarm and conditional expression alarm. Both types are supported by the **Import Tool**.

An auxiliary alarm tag named **[Tag Prefix]ALR[XXXX]** is created for each alarm condition, where **[Tag Prefix]** is the prefix entered in the Wizard dialog, and **[XXXX]** is a sequential number with four digits.

- For hi-lo alarms, the auxiliary alarm tag is created and its hilimit and lolimit properties are set. A math sheet is created to fill this tag with the result of the alarm expression defined in PanelMate. Two alarm condition entries are created in the alarm worksheet: **Hi** and **Lo**.
- For conditional expression alarms, the auxiliary alarm tag is created, and its hilimit is set to 1. A math sheet is created to fill this tag with the result of the alarm expression defined in PanelMate. One alarm condition entry is created in the alarm worksheet: **Hi**.

After the application is imported, two new alarm worksheets are created: one for Aknowledgable alarms and the other for Non-Aknowledgable alarms.



Note:

Deadband ranges for HiLo alarms are not imported. You need to fill them manually, in the respective alarm worksheet.

Security System

The current version of *Import Wizard* does not import the security system automatically. After importing the application, you can reconfigure the security system manually, using the Security System editor in the project development environment.

Communication Interface

This release implements the most significant communication drivers. However, some communication settings may be different from the original configuration, due to the way that BLUE Open Studio treats the information. Most of the applications will not be affected by these differences, but in some cases small changes will be required. The next table lists the drivers supported by the *Import Wizard*, along with their limitations.

Protocol	PanelMate Plus Driver Name	BLUE Open Studio Driver Name	Limitations, Restrictions and Remarks
DF1 Serial	Allen-Bradley Serial	ABKE	<ul style="list-style-type: none"> ▪ Format fields (specified after the # character in PLC Word References) are ignored. ▪ Addresses of only one PLC (the first in the list) are imported. ▪ Signed and Unsigned variables will be imported as signed. ▪ BCD 4 Data Type is not supported by BLUE Open Studio (File Type D).
RIO (Remote I/O)	Allen-Bradley Remote I/O	STRIO	<ul style="list-style-type: none"> ▪ In order to communicate using Allen-Bradley Remote I/O, you will need to acquire a specific board for these protocols. Please refer to the <i>BLUE Open Studio STRIO Driver</i> documentation for more information about the hardware needed. ▪ Format fields (specified after the # character in PLC Word References) are ignored. ▪ Signed and Unsigned variables will be imported as signed. ▪ Double words are not supported. ▪ You cannot have PLCs from different families in the same network. ▪ PanelMate offers four directions for Active Block Transfer: Read, Write, Common and Pass-Through. Only Read and Write are supported by BLUE Open Studio. The others are converted to Read in the import process. ▪ PanelMate supports up to 32 racks in its rack table. BLUE Open Studio supports four racks, one for each channel. Only the four first racks in the table are imported.
Modbus Serial	Modicon ASCII or Modicon RTU	MODBU	<ul style="list-style-type: none"> ▪ Format fields (specified after the # character in PLC Word References) are ignored. ▪ Addresses of only one PLC (the first in the list) are imported. ▪ Signed and Unsigned variables will be imported as signed. ▪ BCD Data Type is not supported. ▪ Char Array data types are not supported.

Protocol	PanelMate Plus Driver Name	BLUE Open Studio Driver Name	Limitations, Restrictions and Remarks
Modbus Plus	Modicon Modbus Plus	MODPL	<ul style="list-style-type: none"> ▪ Format fields (specified after the # character in PLC Word References) are ignored. ▪ Addresses of only one PLC (the first in the list) are imported. ▪ Signed and Unsigned variables will be imported as signed. ▪ Global Data addresses (900xx and G00xx) are not imported.

 **Note:**

Driver configuration can be imported only once into a BLUE Open Studio project. If you change the communication settings of a PanelMate application and try to import it again over a previously imported application, the new settings will not be imported. You need to create a new blank project and then import the modified PanelMate application into it.

Additional Notes

- The **BLUE Open Studio Import Tool for PanelMate** is compatible with applications based on the the PanelMate Plus Configuration Editor – Version 4.01b0. Applications created with different versions of this software may be incompatible with the *Import Wizard*. This may occur because the way of storing these components in the database may change from one version to another, and the importer may not recognize them as valid components. If possible, try to convert your application to this version of PanelMate before importing it.
- **Security:** BLUE Open Studio offers a security model that is very different from the one supported by PanelMate. Due to this difference, the PanelMate passwords and protection configuration are not imported. After importing the application, you can reconfigure the security system for the application using the BLUE Open Studio model.
- **Alarms:** Alarms are also configured differently in BLUE Open Studio and PanelMate. In PanelMate, the alarm configuration is made inside the graphical interface components, while BLUE Open Studio offers separate worksheets for alarm definitions, in a more flexible architecture. For more information about alarms, look at the **Alarm Configuration** section in this document.
- **Message Library:** PanelMate has a message library, where the messages for all the display templates are stored. After the importing process is finished, these messages are copied into the file **Messages.csv**, in the **Symbol** directory. You can edit this file if you need to change the messages.
- **System Online Labels:** This feature is ignored by the **Import Tool**. The application is imported using the default system labels.