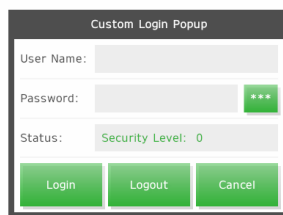


# Sample Templates Document: GPS\_Dialog02.blu



The dialog box is displayed by pushing the following switch. (If you change a value of GPS\_Dialog02 [0], you can perform the same operation with the switch in your environment.).



You agree not to reproduce, other than for your own personal, noncommercial use, all or part of this document on any medium whatsoever without permission of Schneider Electric, given in writing. You also agree not to establish any hypertext links to this document or its content.

Schneider Electric does not grant any right or license for the personal and noncommercial use of the document or its content, except for a non-exclusive license to consult it on an "as is" basis, at your own risk. All other rights are reserved.

All pertinent state, regional, and local safety regulations must be observed when installing and using this product. For reasons of safety and to help ensure compliance with documented system data, only the manufacturer should perform repairs to components.

When devices are used for applications with technical safety requirements, the relevant instructions must be followed.

Failure to use Schneider Electric software or approved software with our hardware products may result in injury, harm, or improper operating results.

Failure to observe this information can result in injury or equipment damage.

## Safety Information



### Important Information

#### NOTICE




Read these instructions carefully, and look at the equipment to become familiar with the device before trying to install, operate, service, or maintain it. The following special messages may appear throughout this documentation or on the equipment to warn of potential hazards or to call attention to information that clarifies or simplifies a procedure.



The addition of this symbol to a “Danger” or “Warning” safety label indicates that an electrical hazard exists which will result in personal injury if the instructions are not followed.



This is the safety alert symbol. It is used to alert you to potential personal injury hazards. Obey all safety messages that follow this symbol to avoid possible injury or death.

 <b>DANGER</b>
<b>DANGER</b> indicates a hazardous situation which, if not avoided, <b>will result in</b> death or serious injury.
 <b>WARNING</b>
<b>WARNING</b> indicates a hazardous situation which, if not avoided, <b>could result in</b> death or serious injury.
 <b>CAUTION</b>
<b>CAUTION</b> indicates a hazardous situation which, if not avoided, <b>could result in</b> minor or moderate injury.
<b>NOTICE</b>
<b>NOTICE</b> is used to address practices not related to physical injury.

#### PLEASE NOTE

Electrical equipment should be installed, operated, serviced, and maintained only by qualified personnel. No responsibility is assumed by Schneider Electric for any consequences arising out of the use of this material.

A qualified person is one who has skills and knowledge related to the construction and operation of electrical equipment and its installation, and has received safety training to recognize and avoid the hazards involved.

---

## About the Book

---



### At a Glance

#### Document Scope

This manual describes how to use this product.

#### Validity Note

This documentation is valid for this product.

The technical characteristics of the device(s) described in this manual also appear online at <http://www.pro-face.com>.

The characteristics presented in the present document should be the same as those that appear online. In line with our policy of constant improvement we may revise content over time to improve clarity and accuracy. In the event that you see a difference between the document and online information, use the online information as your reference.

#### Registered Trademarks

Microsoft and Windows are registered trademarks of Microsoft Corporation in the United States and/or other countries.

Product names used in this manual may be the registered trademarks owned by the respective proprietors.

#### Related Documents

You can download the manuals related to this product, such as the software manual, from our support site at <http://www.pro-face.com/trans/en/manual/1001.html>.

#### Product Related Information

If the equipment is used in a manner not specified by the manufacturer, the protection provided by the equipment may be impaired.

In the event this product does not run properly due to whatever reason, it may be difficult or impossible to identify a function. Functions that may present a hazard if not immediately executed, such as a fuel shut-off, must be provided independently of this product. The machine's control system design must take into account the operator being unable to control the machine or making mistakes in the control of the machine.

### **WARNING**

#### **UNINTENDED EQUIPMENT OPERATION**

The application of this product requires expertise in the design and programming of control systems. Only persons with such expertise should be allowed to program, install, alter, and apply this product.

- Follow all local and national safety standards.

**Failure to follow these instructions can result in death, serious injury, or equipment damage.**

For additional information, refer to NEMA ICS 1.1 (latest edition), "Safety Guidelines for the Application, Installation, and Maintenance of Solid State Control" and to NEMA ICS 7.1 (latest edition), "Safety Standards for Construction and Guide for Selection, Installation and Operation of Adjustable-Speed Drive Systems" or their equivalent governing your particular location.

## Table of Content

Safety Information .....	3
About the Book .....	4
Template Overview .....	6
Project structure.....	6
Run Time Behavior .....	7
How to copy the objects to your project file.....	8
How to change Dialog Variables .....	14
How to change Dialog Text .....	19
How to Configure User Management .....	20
How to Resize Dialog.....	22
How to Move the Grid Parts.....	22

Target: ST-6500WAD

Driver: None

BLUE version 3.3 SP1 or later

## Template Overview

This template has a user login popup Dialog with Username, Password Input field with Status and Login, Logout, Cancel buttons.

## Project structure

On Simple\_Demo screen, one content display is placed. Content display (Content1) is called in Simple\_Demo screen.

Screen			
Simple_Demo	ContentDisplay1 (Content ID: 1)	GPS_Dialog02	User Login popup



## **Run Time Behavior**

Runtime/Simulation of this template displays a switch in bottom with user login popup.

Click on the switch to popup the dialog.

Enter the Username and Password.

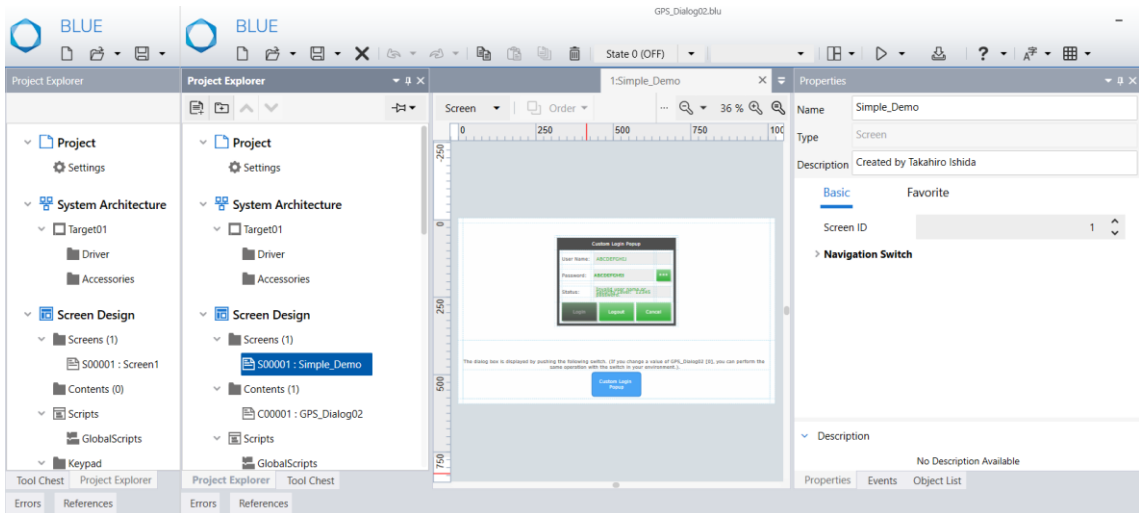
Click on Login to login as an entered user.

Click on Logout to logout from current logged in user.

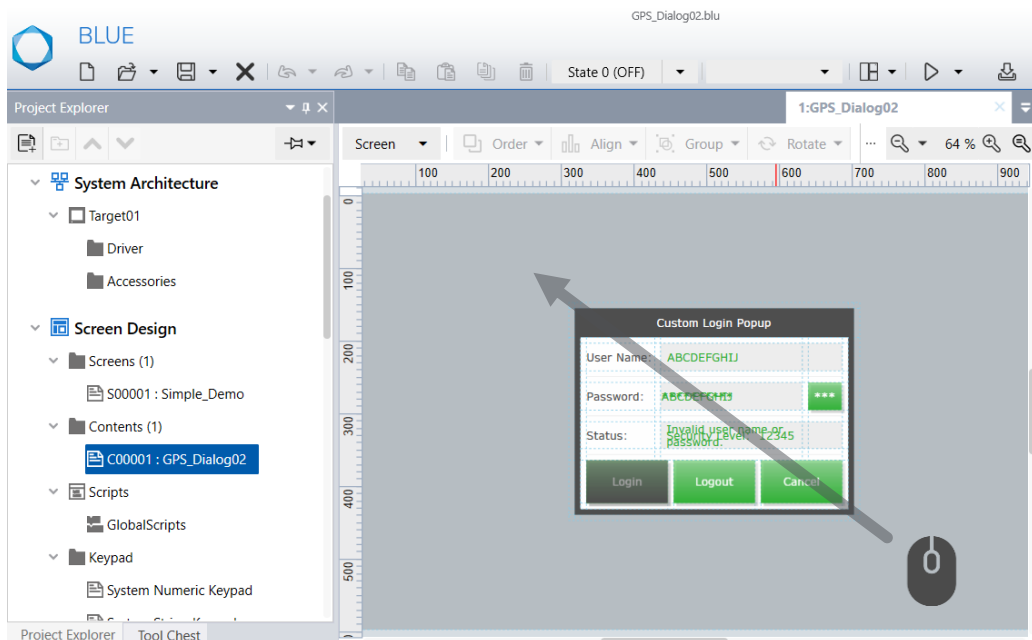
Click on Cancel button to close the dialog.

## How to copy the objects to your project file

1. Open your project file and downloaded project file simultaneously.

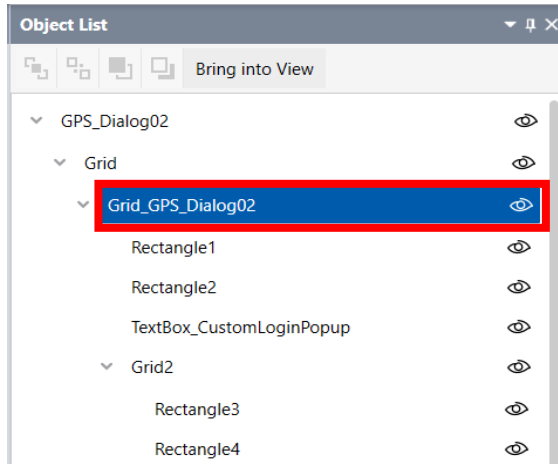


2. Open the downloaded project file and select the Grid object.
  - Click the desired Content from “Contents” and select the Grid parts (Grid\_GPS\_Dialog02) by dragging the mouse




Or

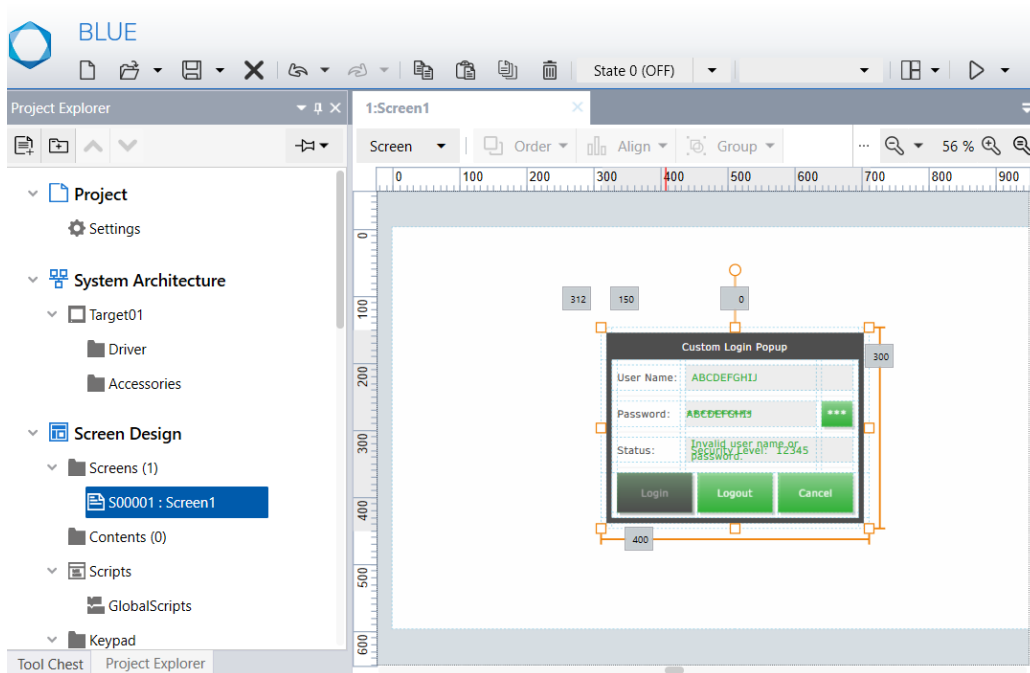
- In Object List, select Grid\_GPS\_Dialog02 object.



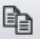
3. Copy the selected Grid object in content using  copy icon in global Toolbar.

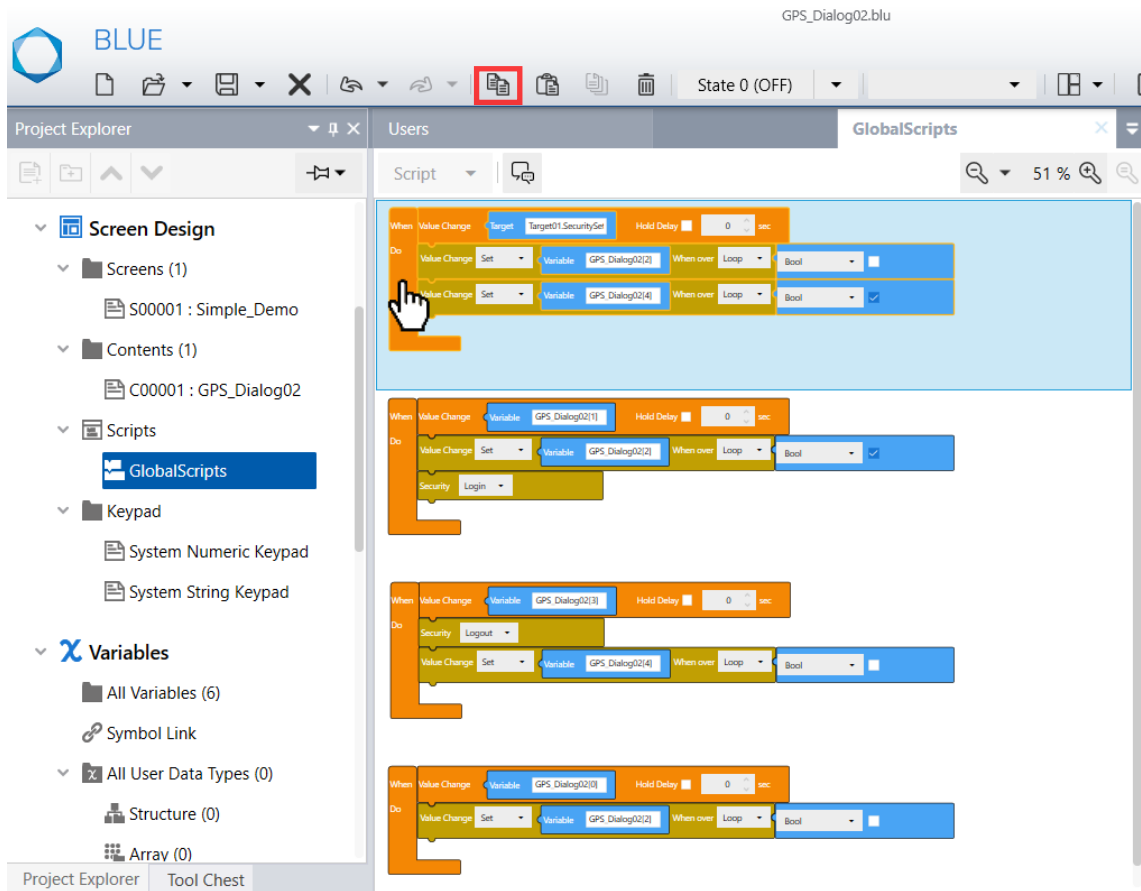
4. Open your project file.

Select the desired Screen/Content and click the paste  icon in global Toolbar.

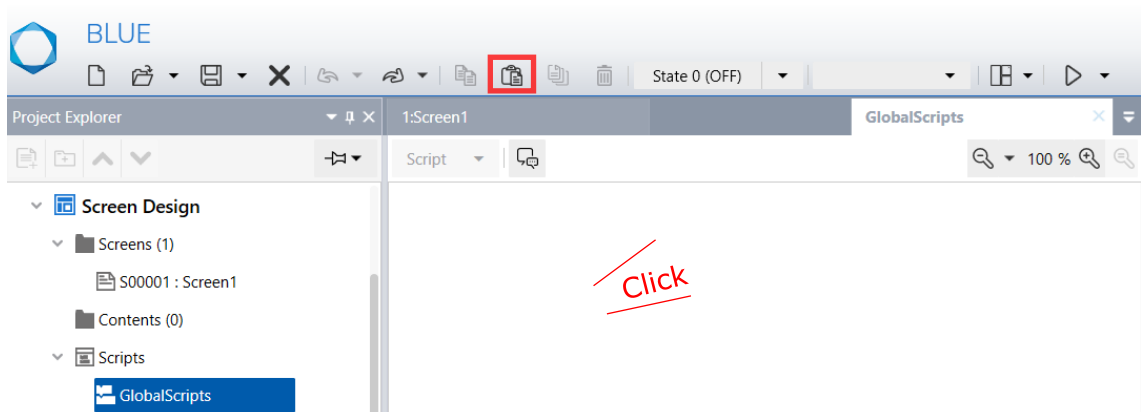


5. You can resize the object. For more details, refer [How to resize Dialog.](#)

- In GlobalScripts, Select the displayed script (by clicking on trigger) and copy it using  icon from the global Toolbar.

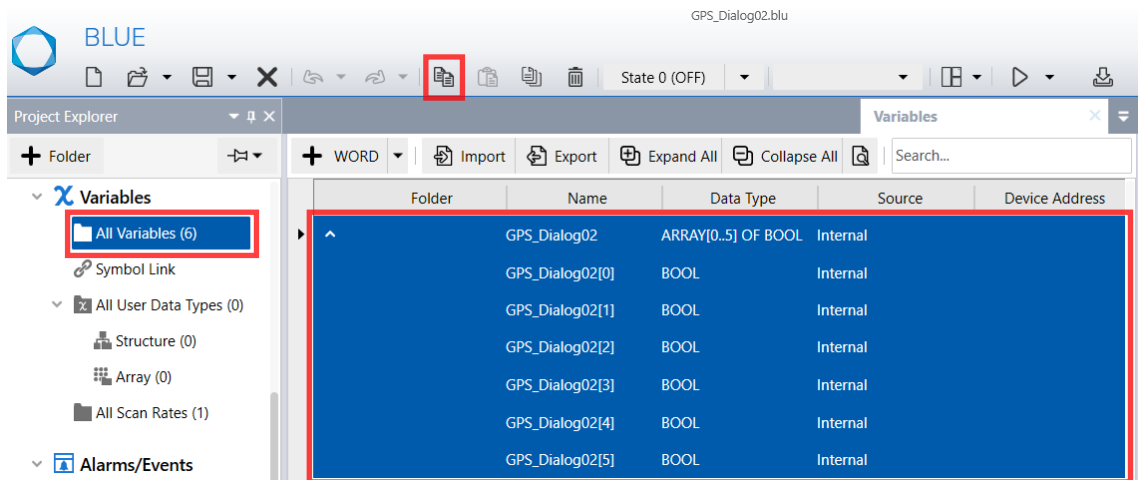


- Open your project file.  
Select Globalscripts, select editor & click  paste icon from the global Toolbar.

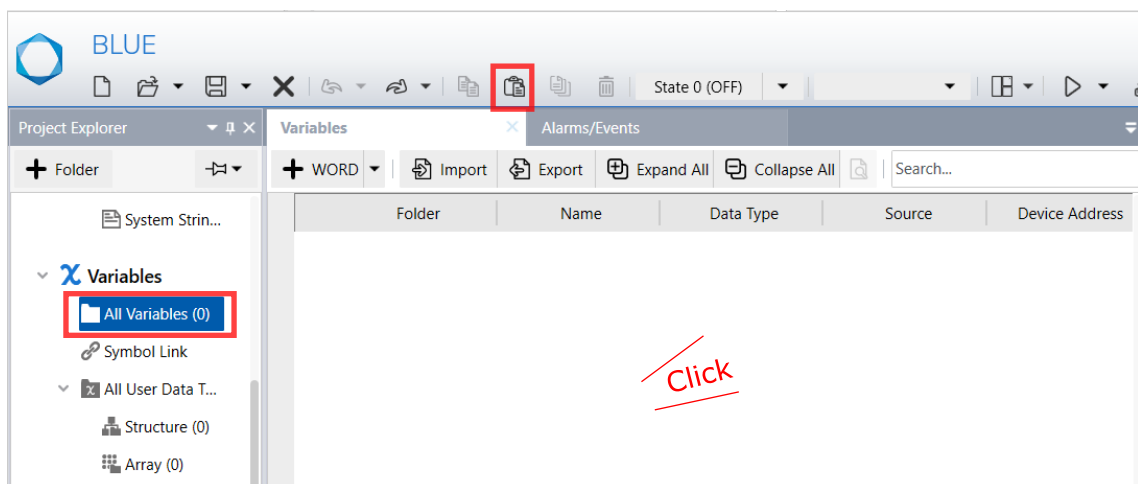


- Repeat step 6 & 7, to copy all scripts.

- Open downloaded project file and select “All variables”. Select all the displayed variables and click the copy icon from global Toolbar.

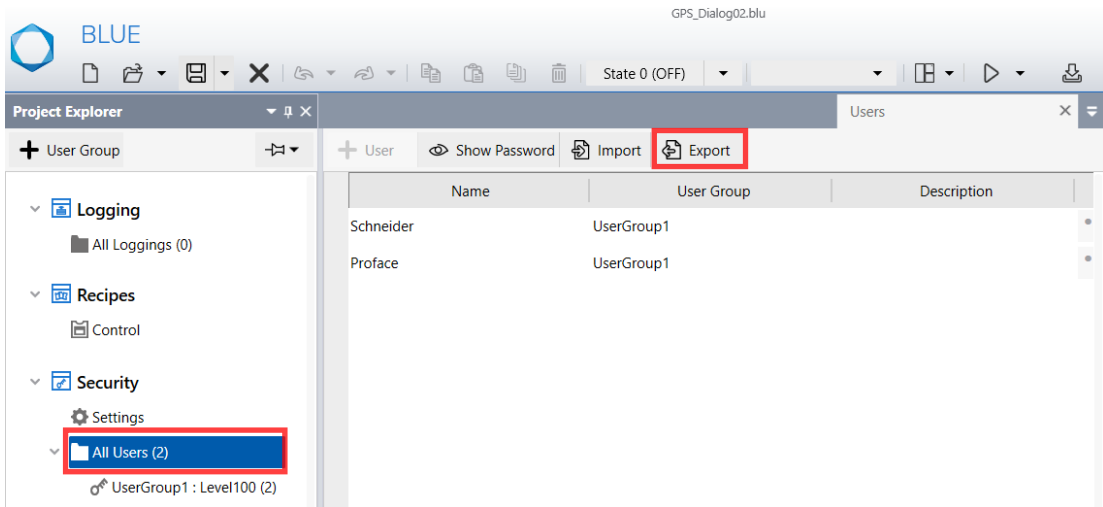


- Open your project file and select “All variables”. Click on the variable screen and click paste icon from the global Toolbar.

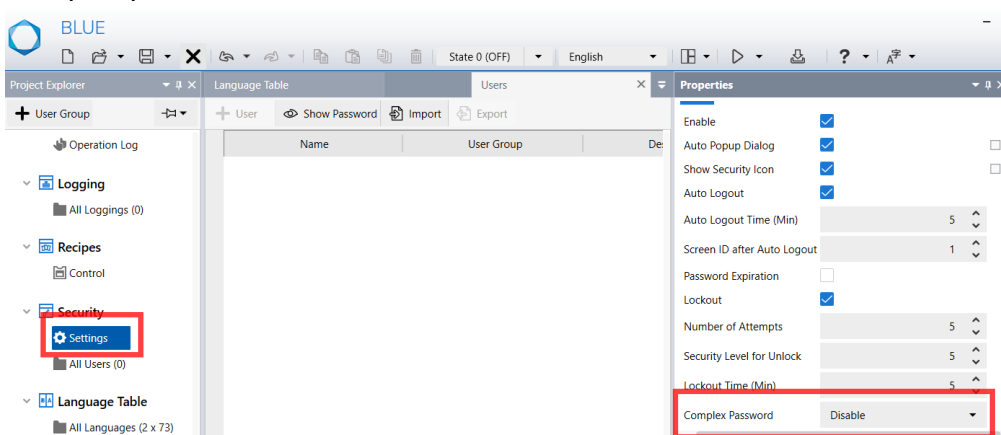


Note: You can also create your own variables to bind with Dialog. For more details, refer [How to change Dialog Variables](#).

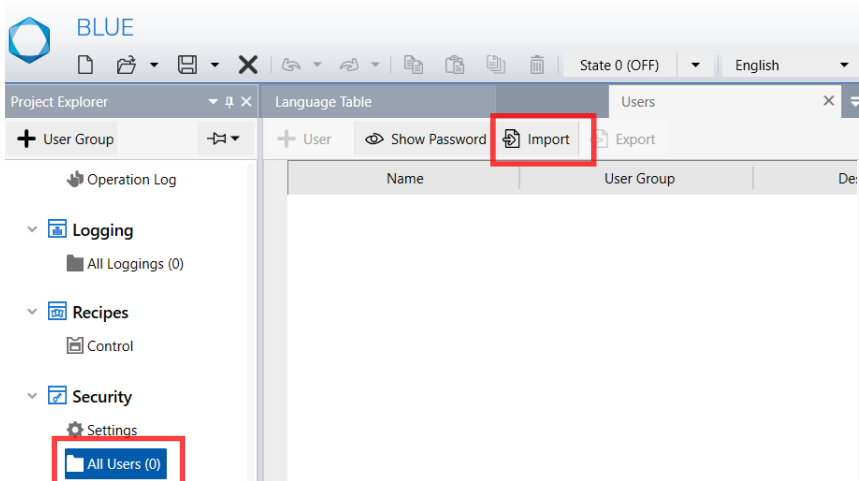
- Open the downloaded project file, select “All Users”. Click the export icon from the local Toolbar and save in desired path.



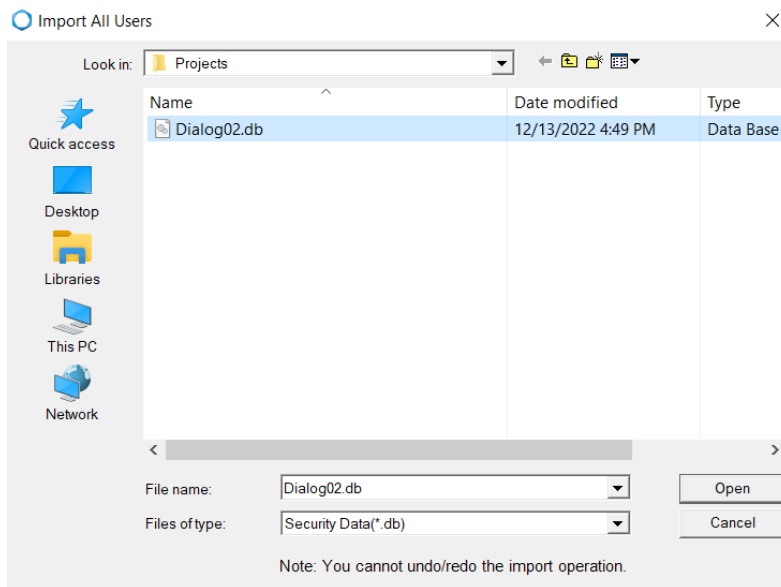
- Open your project file, select Security > Settings. In Properties tab, Disable Complex password.



- select “All Users”. Click the import icon from the local Toolbar.



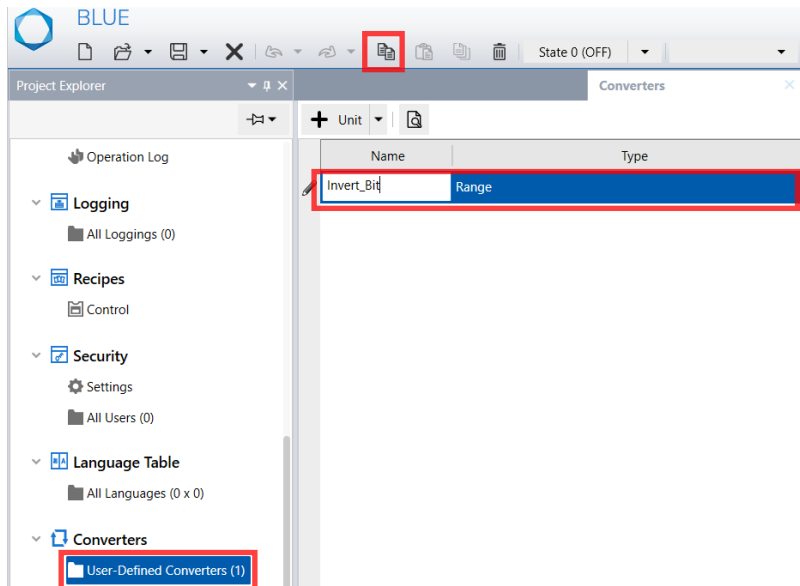
14. Select the path (where it is exported), File name, File Type and Click Open.



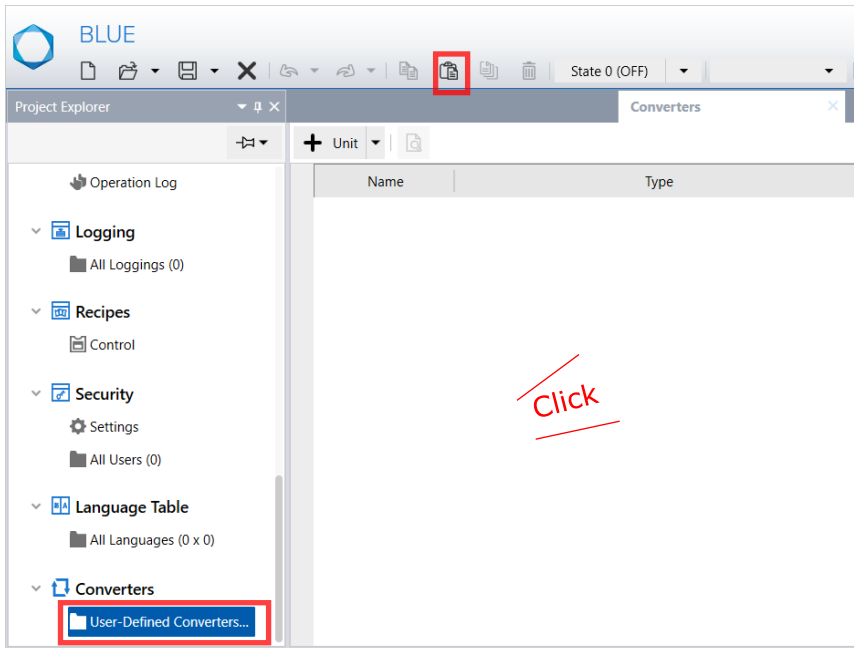
Result: All Users will be imported to your project.

Note: You can also use your own Users settings. For more details, refer [How to Configure User Management](#).

15. Open the downloaded project file, select “User-Defined Converters”. Select the displayed converter and click the copy icon from the global Toolbar.



- Open your project file, select “User-Defined Converters”. Click on the Converter screen and click paste icon from the global Toolbar.



## How to change Dialog Variables

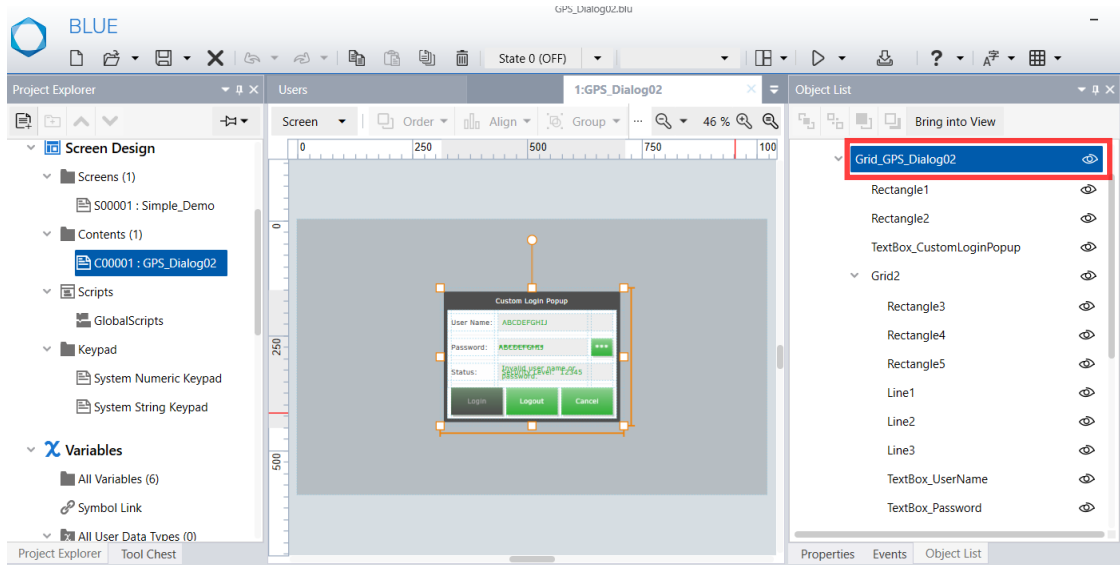
When you replace default variable with other variable, make sure they are replaced in respective places.

Table1

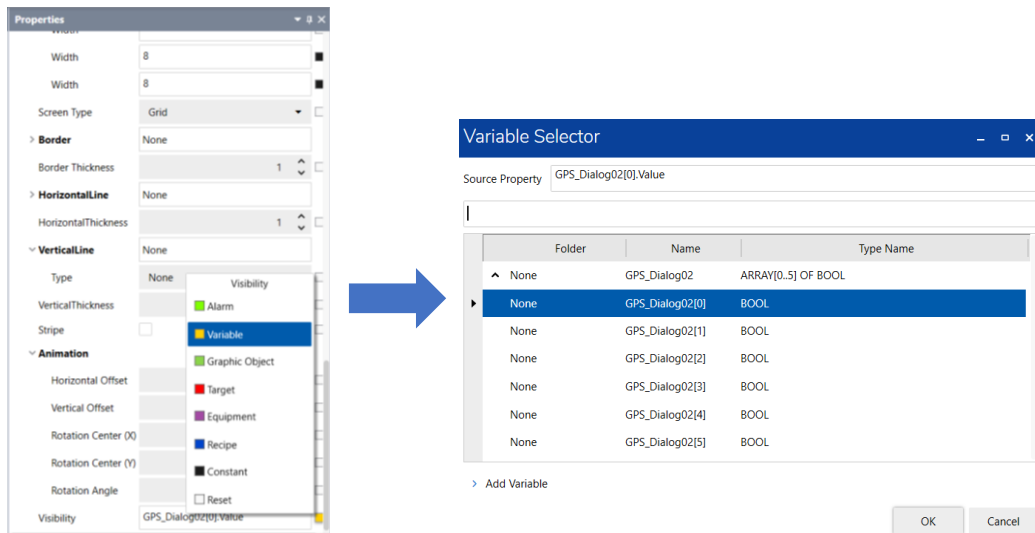
Purpose	Variable
Visibility	GPS_Dialog02[0]
Login	GPS_Dialog02[1]
Status display	GPS_Dialog02[2]
Logout	GPS_Dialog02[3]
Enabling Login button	GPS_Dialog02[4]
Password visibility	GPS_Dialog02[5]

Follow below steps for Object binding,

1. In screen/Content, select the Grid\_GPS\_Dialog02.

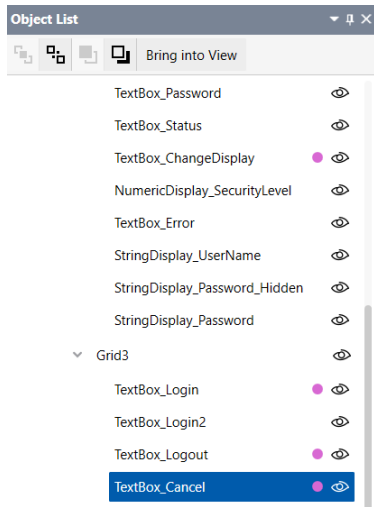


2. In Properties tab, select **Basic > Visibility** and bind the desired variable used for visibility from variable selector.

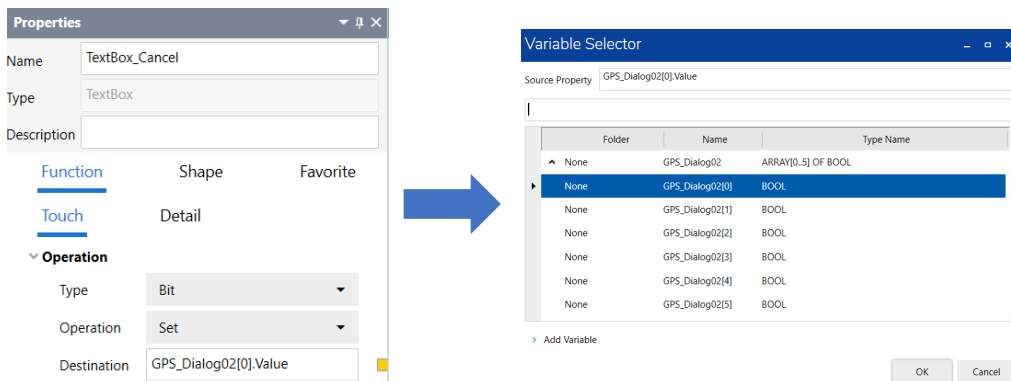


Note: The variable used here is used to control visibility of the Dialog.

3. In Object List, select **TextBox\_Cancel**



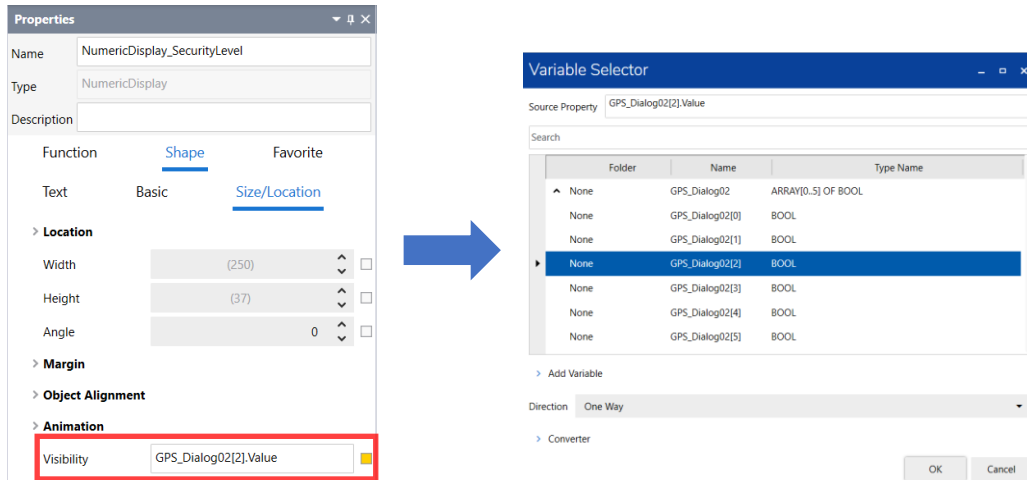
4. In Properties tab, select **Function > Touch > Operation > Destination** and bind the desired variable used for visibility from variable selector.



5. Repeat step 3 & 4 for **TextBox\_Login** with variable used for Login, **TextBox\_Logout** with variable used for Logout, **TextBox\_ChangeDisplay** with variable used for password visibility.

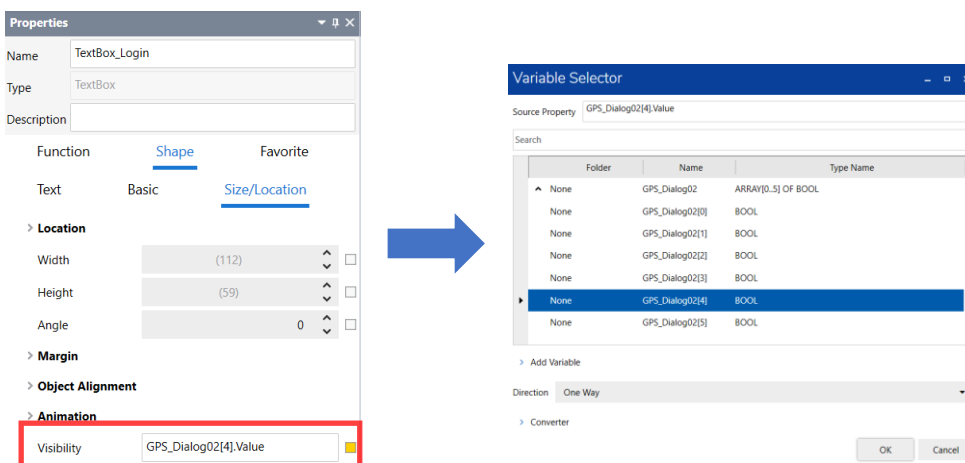
6. In Object List, select **NumericDisplay\_SecurityLevel**

- In Properties tab, select **Shape > Size/Location > Visibility** and bind the desired variable used for status display from variable selector.

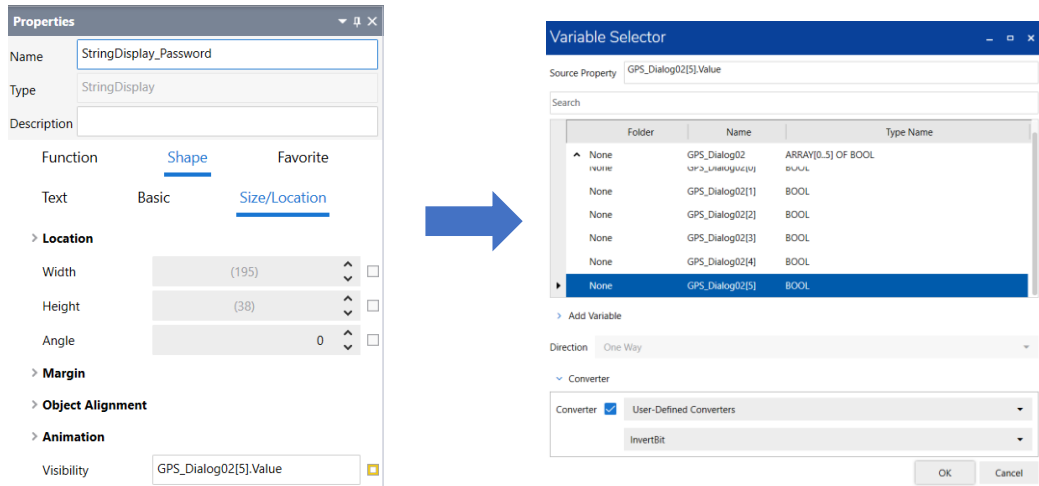


- Repeat step 6 & 7 for TextBox\_Error.

- Repeat step 6 & 7 for TextBox\_Login and TextBox\_Login2 with variable used for enabling Login button

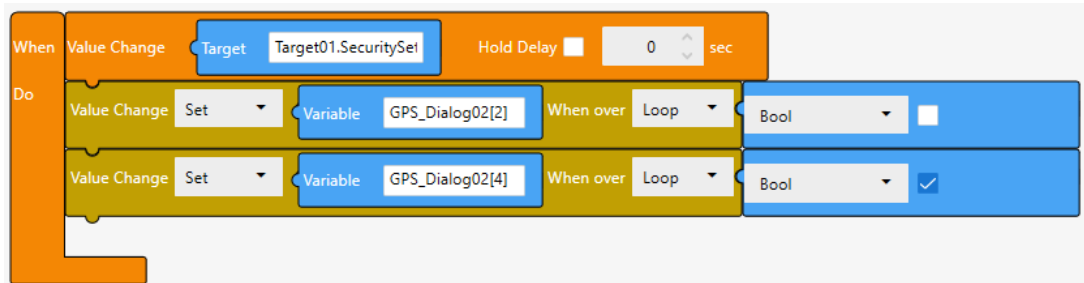


- Repeat step 6 & 7 for StringDisplay\_Password\_Hidden and StringDisplay\_Password with variable used for password visibility

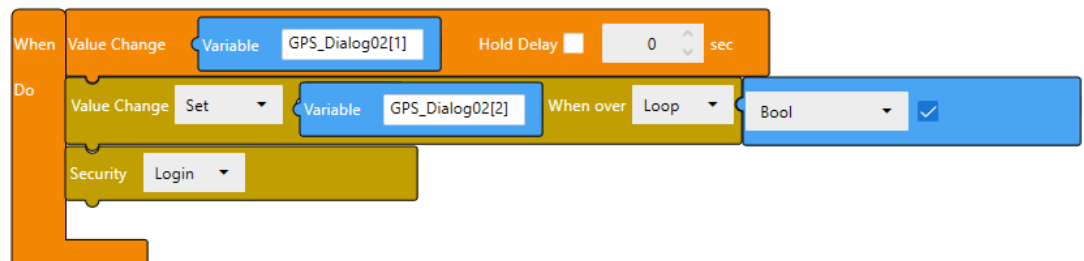


Follow below steps for Script Variable binding,

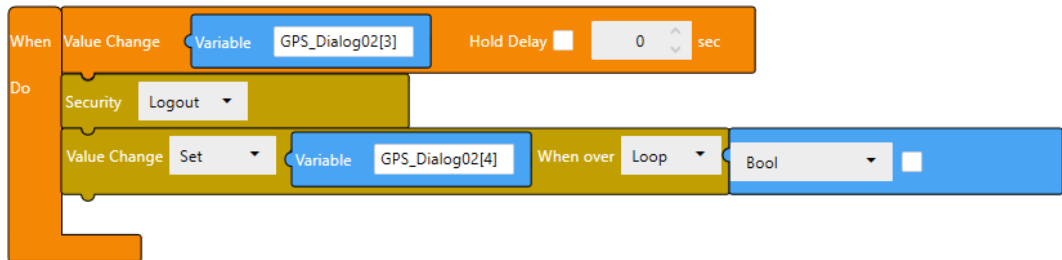
- In GlobalScripts, select 1<sup>st</sup> script and bind the variable used for Status Display in first operation & enabling login button in second operation.



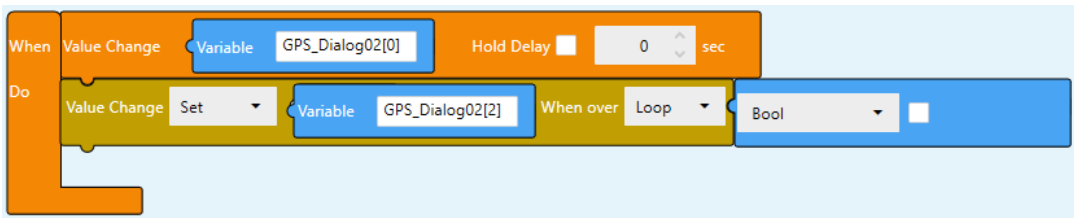
- Select 2<sup>nd</sup> script and bind the variable used for Login in trigger & Status Display in first operation.



3. Select 3rd script and bind the variable used for Logout in trigger & enabling login button in second operation.

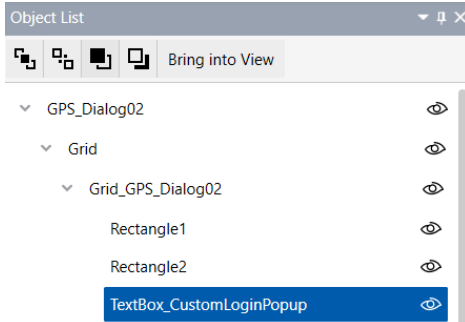


4. Select 4<sup>th</sup> script and bind the variable used for Visibility in trigger & Status Display in first operation.

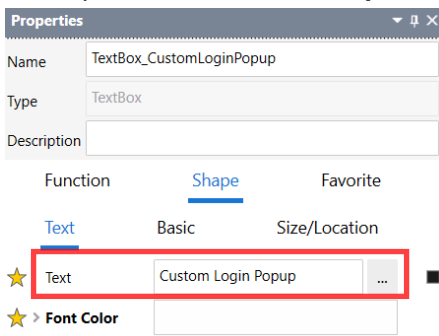


## How to change Dialog Text

1. Select the Grid object. In Object List, select TextBox\_CustomLoginPopup.



2. In Properties tab, Select **Shape > Text > Text** and edit the desired text.

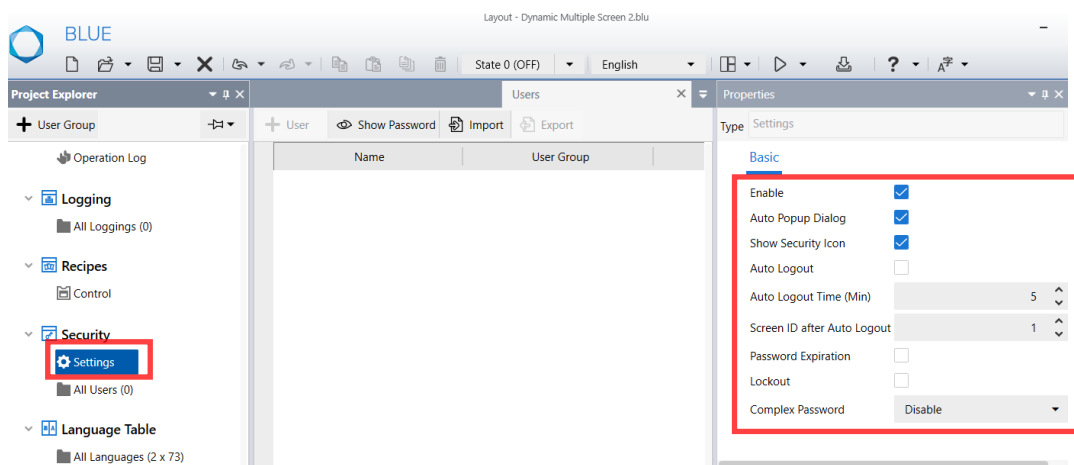


- Repeat above steps in all the required text boxes (TextBox\_UserName, TextBox\_Password, TextBox\_Status, TextBox\_ChangeDisplay, TextBox\_Error, TextBox\_Login, TextBox\_Login2, TextBox\_Logout, TextBox\_Cancel).

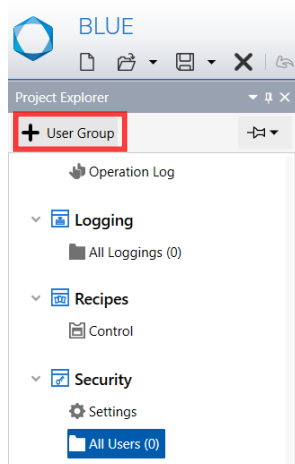
## How to Configure User Management

To add required users in your project, follow below steps:

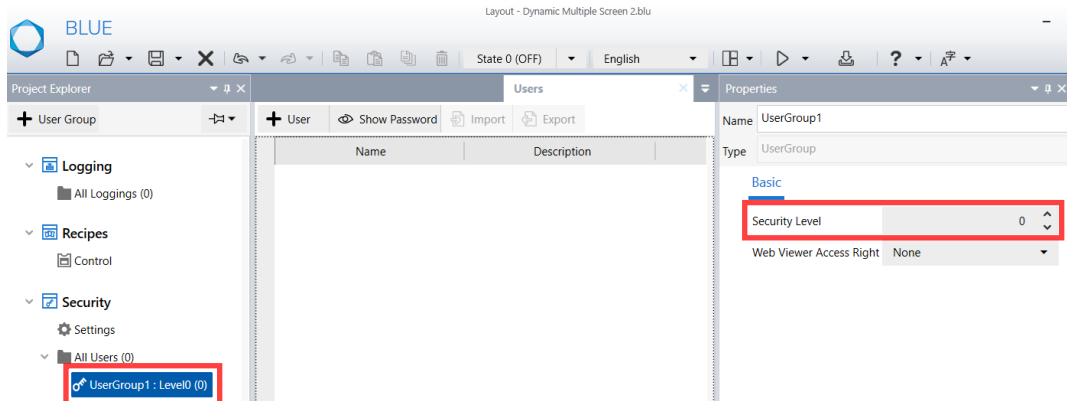
- Select Security > Settings. In Properties tab, configure complex Password & other properties as per your requirement.



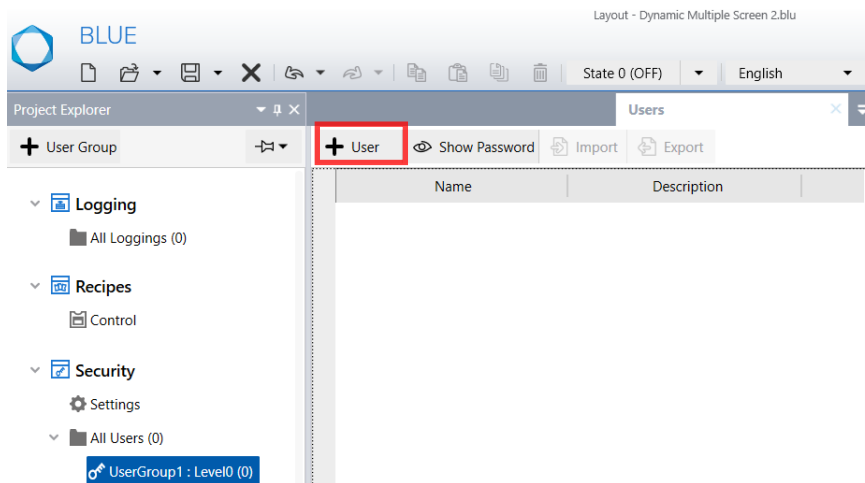
- Select Security > All Users. Click Add User Group icon.



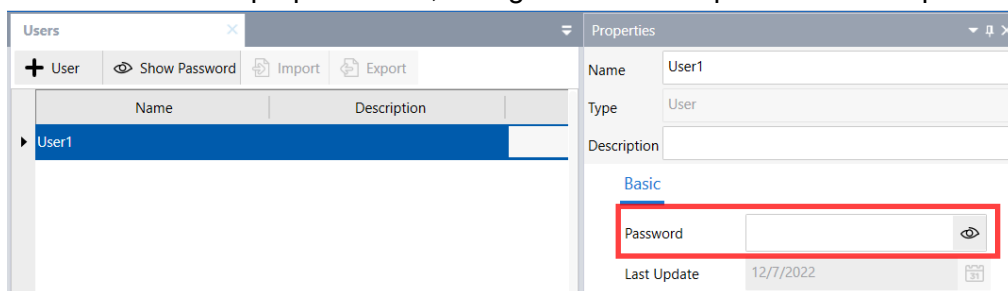
3. Select new user group added. In Properties tab, configure security Level.



4. Click Add user icon in the editor local toolbar.



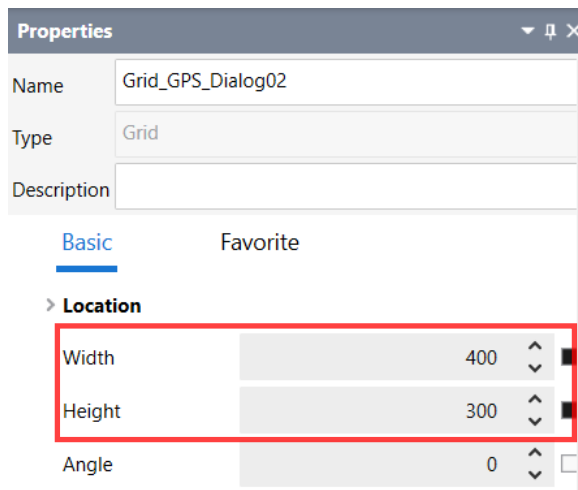
5. Select the user. In properties tab, configure name and password as required.



6. Repeat step 2&3 to add user group and step 4, 5 to add new users, as per your requirement.

## How to Resize Dialog

1. Select screen (where login popup is placed) and then select the Grid parts.
2. In properties tab, change the value of Width and Height.



Note: Modify the font size of text in content to fit as per the new size change.

## How to Move the Grid Parts

To move the Grid Parts, select the Grid Parts by dragging a mouse and click the outside frame (within 8 pixels) and move it. Else, the form of the Grid Parts will not be kept.

