

# Sample Templates Document: GPS\_Fan01.blu



It is a fan that can be scaled freely. Entering + value will rotate it clockwise, and entering - value will rotate it counterclockwise.



You agree not to reproduce, other than for your own personal, noncommercial use, all or part of this document on any medium whatsoever without permission of Schneider Electric, given in writing. You also agree not to establish any hypertext links to this document or its content.

Schneider Electric does not grant any right or license for the personal and noncommercial use of the document or its content, except for a non-exclusive license to consult it on an "as is" basis, at your own risk. All other rights are reserved.

All pertinent state, regional, and local safety regulations must be observed when installing and using this product. For reasons of safety and to help ensure compliance with documented system data, only the manufacturer should perform repairs to components.

When devices are used for applications with technical safety requirements, the relevant instructions must be followed.

Failure to use Schneider Electric software or approved software with our hardware products may result in injury, harm, or improper operating results.

Failure to observe this information can result in injury or equipment damage.

## Safety Information



### Important Information

#### NOTICE




Read these instructions carefully, and look at the equipment to become familiar with the device before trying to install, operate, service, or maintain it. The following special messages may appear throughout this documentation or on the equipment to warn of potential hazards or to call attention to information that clarifies or simplifies a procedure.



The addition of this symbol to a “Danger” or “Warning” safety label indicates that an electrical hazard exists which will result in personal injury if the instructions are not followed.



This is the safety alert symbol. It is used to alert you to potential personal injury hazards. Obey all safety messages that follow this symbol to avoid possible injury or death.

 <b>DANGER</b>
<b>DANGER</b> indicates a hazardous situation which, if not avoided, <b>will result in</b> death or serious injury.
 <b>WARNING</b>
<b>WARNING</b> indicates a hazardous situation which, if not avoided, <b>could result in</b> death or serious injury.
 <b>CAUTION</b>
<b>CAUTION</b> indicates a hazardous situation which, if not avoided, <b>could result in</b> minor or moderate injury.
<b>NOTICE</b>
<b>NOTICE</b> is used to address practices not related to physical injury.

#### PLEASE NOTE

Electrical equipment should be installed, operated, serviced, and maintained only by qualified personnel. No responsibility is assumed by Schneider Electric for any consequences arising out of the use of this material.

A qualified person is one who has skills and knowledge related to the construction and operation of electrical equipment and its installation and has received safety training to recognize and avoid the hazards involved.

---

## About the Book

---



### At a Glance

#### Document Scope

This manual describes how to use this product.

#### Validity Note

This documentation is valid for this product.

The technical characteristics of the device(s) described in this manual also appear online at <http://www.pro-face.com>.

The characteristics presented in the present document should be the same as those that appear online. In line with our policy of constant improvement we may revise content over time to improve clarity and accuracy. In the event that you see a difference between the document and online information, use the online information as your reference.

#### Registered Trademarks

Microsoft and Windows are registered trademarks of Microsoft Corporation in the United States and/or other countries.

Product names used in this manual may be the registered trademarks owned by the respective proprietors.

#### Related Documents

You can download the manuals related to this product, such as the software manual, from our support site at <http://www.pro-face.com/trans/en/manual/1001.html>.

#### Product Related Information

If the equipment is used in a manner not specified by the manufacturer, the protection provided by the equipment may be impaired.

In the event this product does not run properly due to whatever reason, it may be difficult or impossible to identify a function. Functions that may present a hazard if not immediately executed, such as a fuel shut-off, must be provided independently of this product. The machine's control system design must take into account the operator being unable to control the machine or making mistakes in the control of the machine.

### **WARNING**

#### **UNINTENDED EQUIPMENT OPERATION**

The application of this product requires expertise in the design and programming of control systems. Only persons with such expertise should be allowed to program, install, alter, and apply this product.

- Follow all local and national safety standards.

**Failure to follow these instructions can result in death, serious injury, or equipment damage.**

For additional information, refer to NEMA ICS 1.1 (latest edition), "Safety Guidelines for the Application, Installation, and Maintenance of Solid-State Control" and to NEMA ICS 7.1 (latest edition), "Safety Standards for Construction and Guide for Selection, Installation and Operation of Adjustable-Speed Drive Systems" or their equivalent governing your particular location.

## Table of Content

Safety Information .....	3
About the Book .....	4
Template Overview .....	6
Project structure.....	6
Run Time Behavior .....	7
How to copy the objects to your project file.....	8
How to change GPS Fan variable .....	12
How to Resize Grid Parts .....	13
How to Duplicate Grid Parts .....	13
How to Move the Grid Parts.....	14

Target: ST-6500WAD

Driver: None

BLUE version 3.3 or later

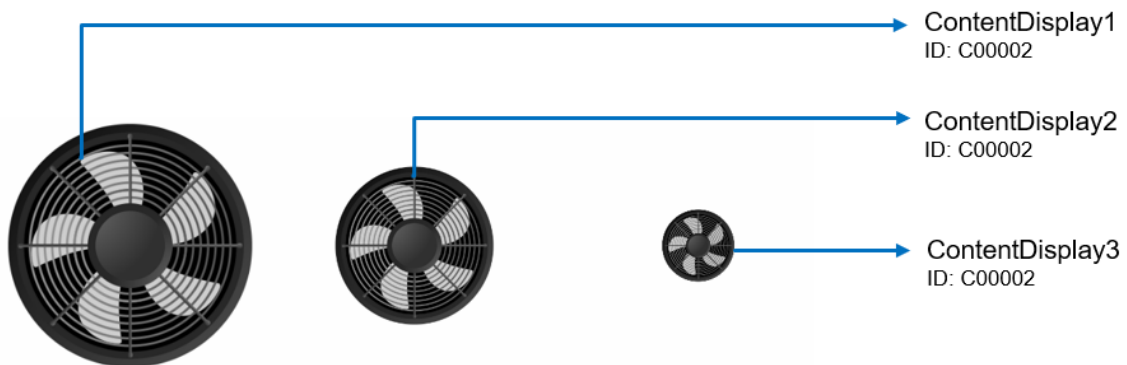
## Template Overview

This template has a Fan which is scaled freely to rotate Clockwise (+value) and counterclockwise (– value).

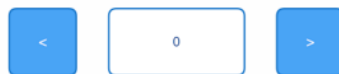
## Project structure

On Simple\_Demo screen, 3 Content displays (Layout Object) of same content are placed in different sizes to display the fan rotation based on given value.

Screen			
Simple_Demo	ContentDisplay1 (Contents ID: 2)	GPS_Fan01	Large size
	ContentDisplay2 (Contents ID: 2)	GPS_Fan01	Medium size
	ContentDisplay3 (Contents ID: 2)	GPS_Fan01	Small size



It is a fan that can be scaled freely. Entering + value will rotate it clockwise, and entering - value will rotate it counterclockwise.

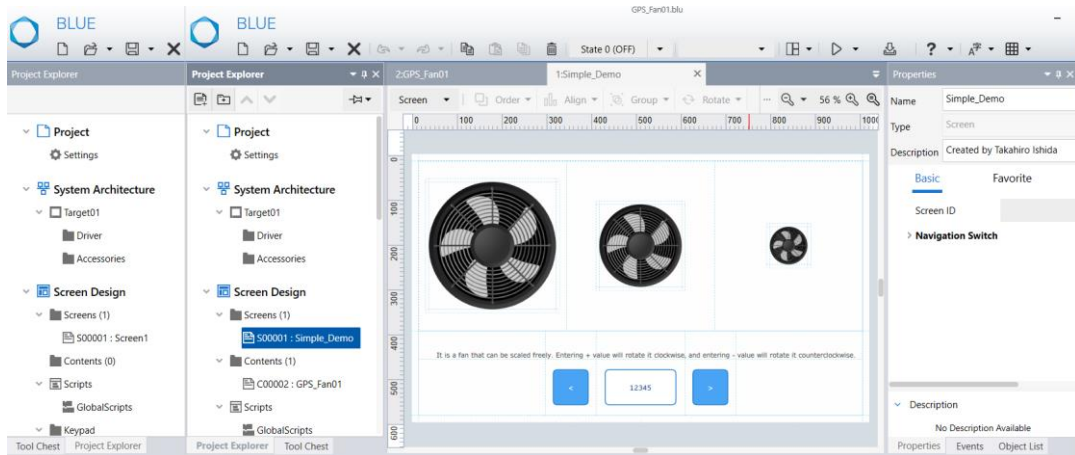


## Run Time Behavior

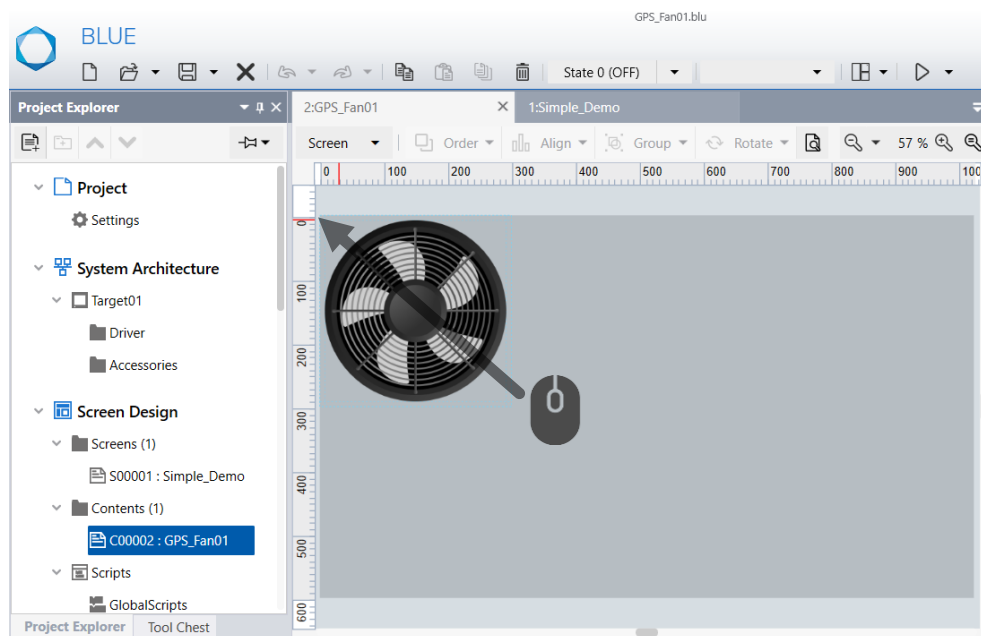
Runtime/Simulation of this template displays a Numeric Display with 2 Switches (to increment/decrement) and 3 GPS Fan (of different size). Click the Numeric Display and edit the value (or click + switch or click – switch Rotation of Fan) to display rotation of fan. Positive value is used for clockwise rotation and negative value is used for counterclockwise rotation.

## How to copy the objects to your project file

1. Open your project file and downloaded project file simultaneously.

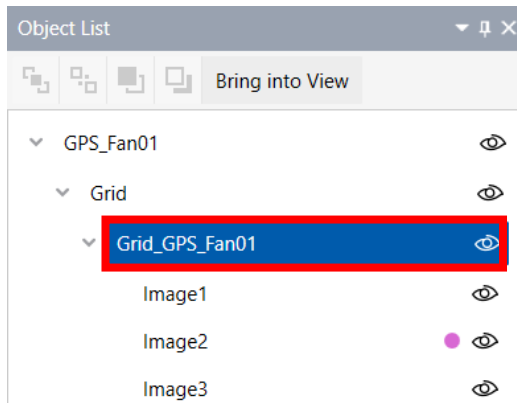




2. Open the downloaded project file and select the Grid object.
  - Click the desired Content from “Contents” and select the Grid parts by dragging the mouse

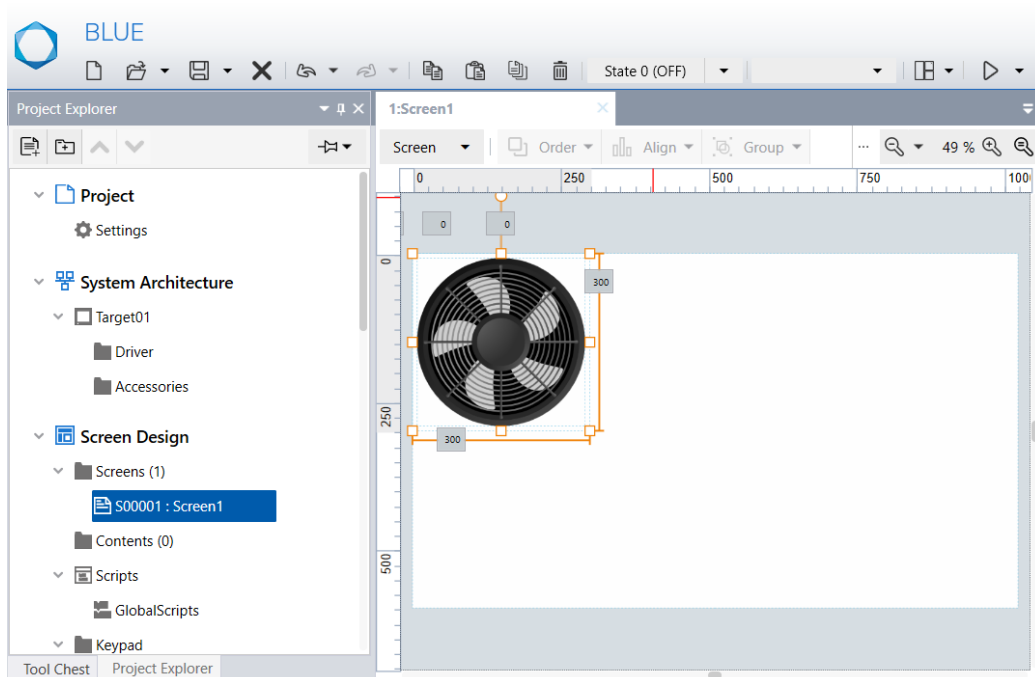


Or

- In Object List, select Grid\_GPS\_Fan01 object.



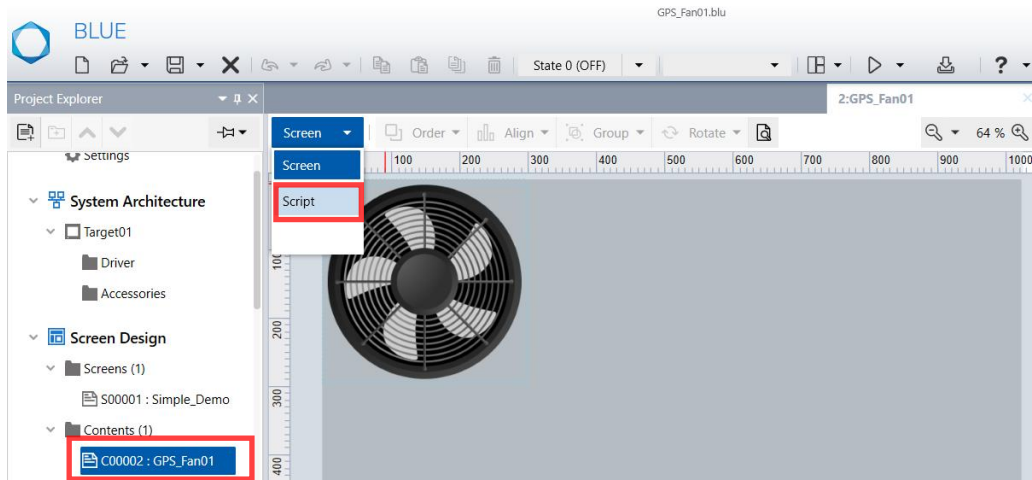
3. Copy the selected Grid object in content using  copy icon in global Toolbar.
4. Open your project file.  
Select the desired Screen/Content and click the paste  icon in global Toolbar.




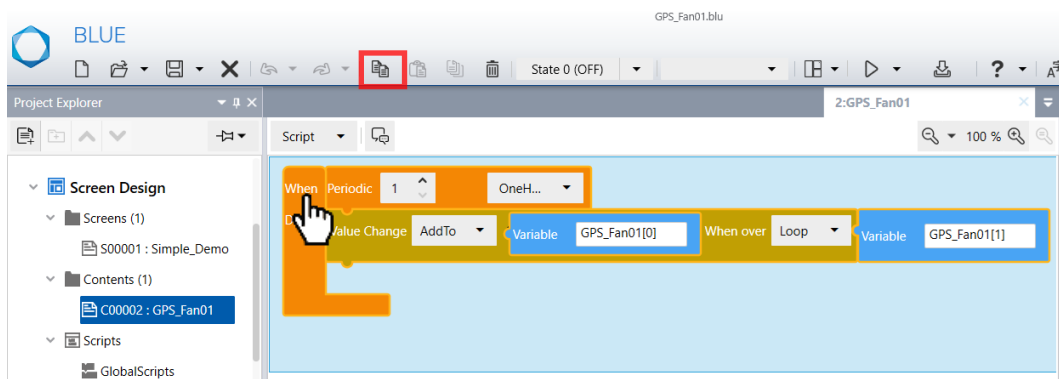
5. You can resize the GPS Fan. For more details, refer [How to Resize Grid Parts](#)

6. Open the downloaded project file.


Click the Content from “Contents” and select Script from the dropdown.

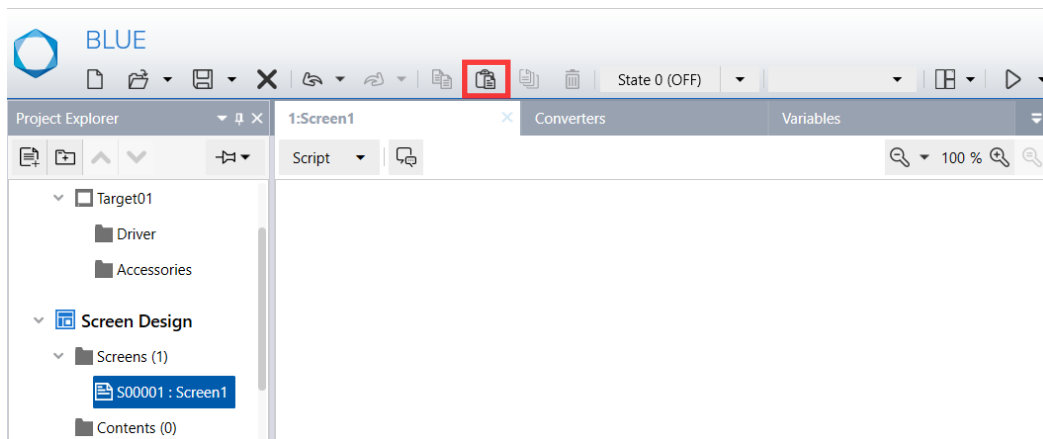


7. Select the displayed script (by clicking on trigger) and copy it using  icon from the global Toolbar.

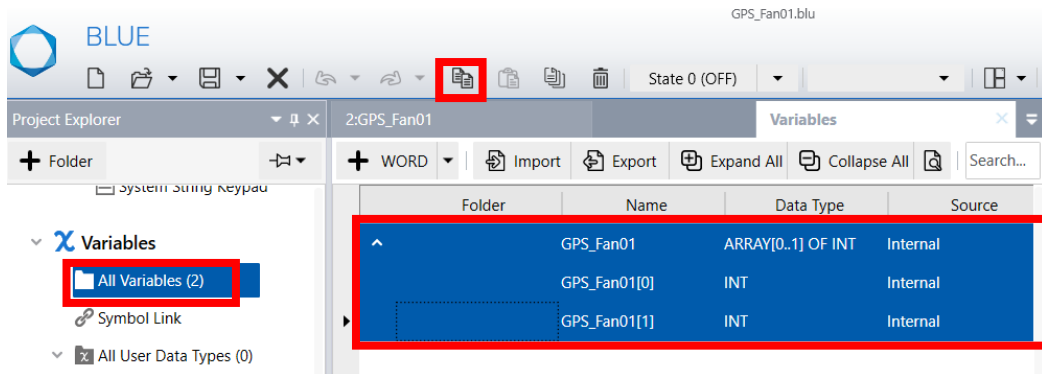


8. Open your project file.

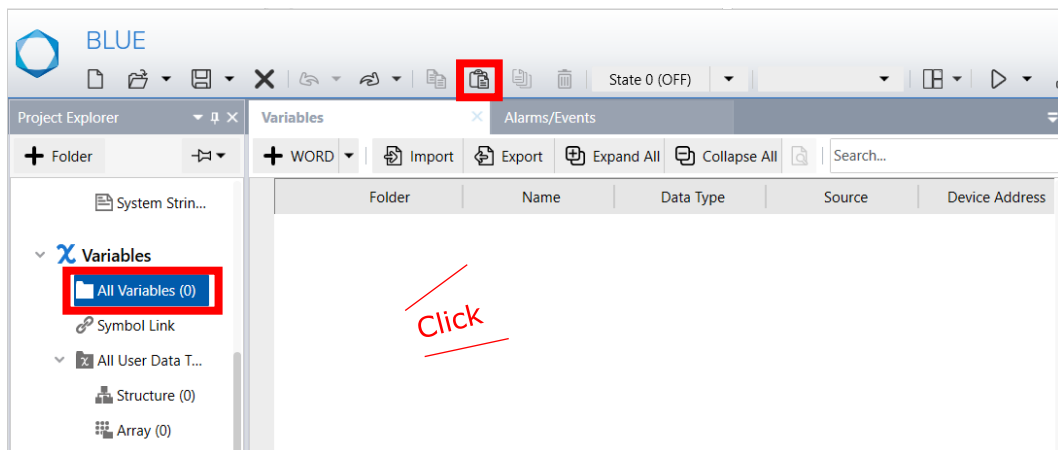
In the screen (Where Fan is placed), select Script from dropdown and click  paste icon from the global Toolbar.



- Open the downloaded project file and select “All variables”. Select the displayed variables and click the copy icon from global Toolbar.



- Open your project file and select “All Variables”. Click an existing variable or a blank Variable and click paste icon in global toolbar.

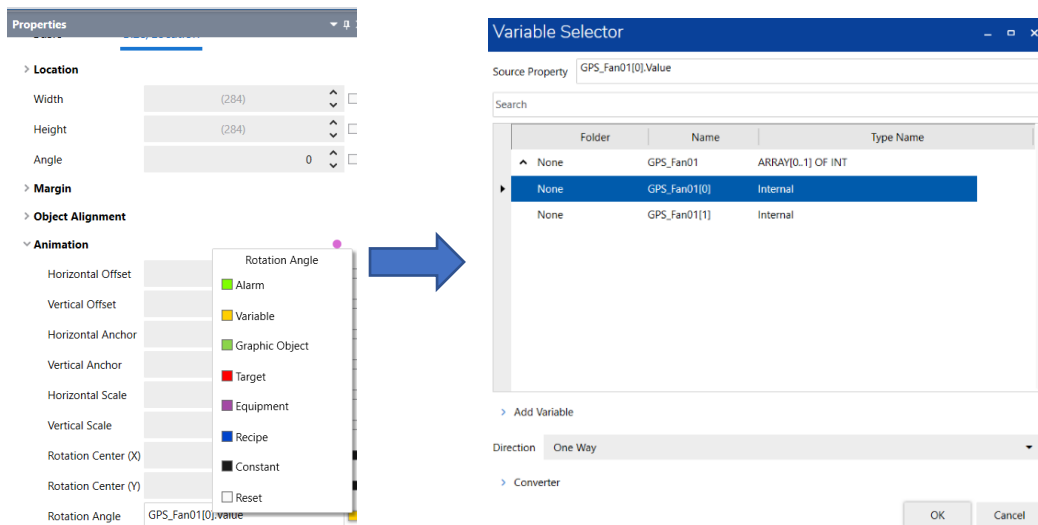


The copied variable is pasted in your project.

Note: You can also create your own variables to display in GPS Fan. For more details, refer [How to change GPS Fan variable](#)

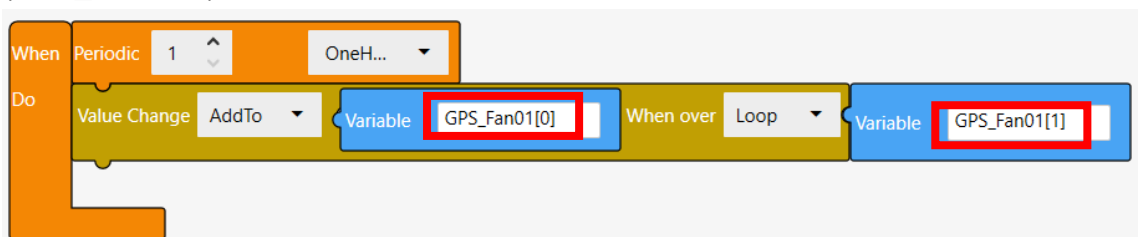
## How to change GPS Fan variable

1. Open your project, in the content screen, select Image2 (You can also select it from Object List).
2. In Properties tab, Select **Shape > Size/Location > Animation > Rotation Angle** and bind the desired variable used for angle (GPS\_Fan01[0]) from variable selector.



Note: Make sure variable used for angle has input range of 0 to 360.

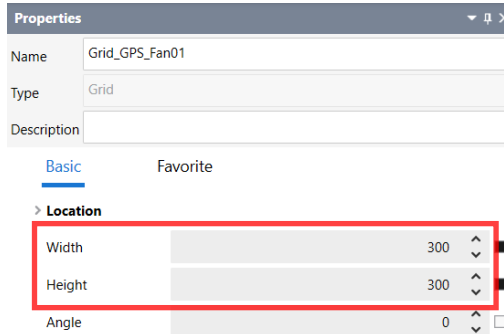
3. In the scripts, bind the variable used for angle (GPS\_Fan01[0]) and scaling (GPS\_Fan01[1]).



Note: Make sure variable used for scaling has input range of -100 to 100.

## How to Resize Grid Parts

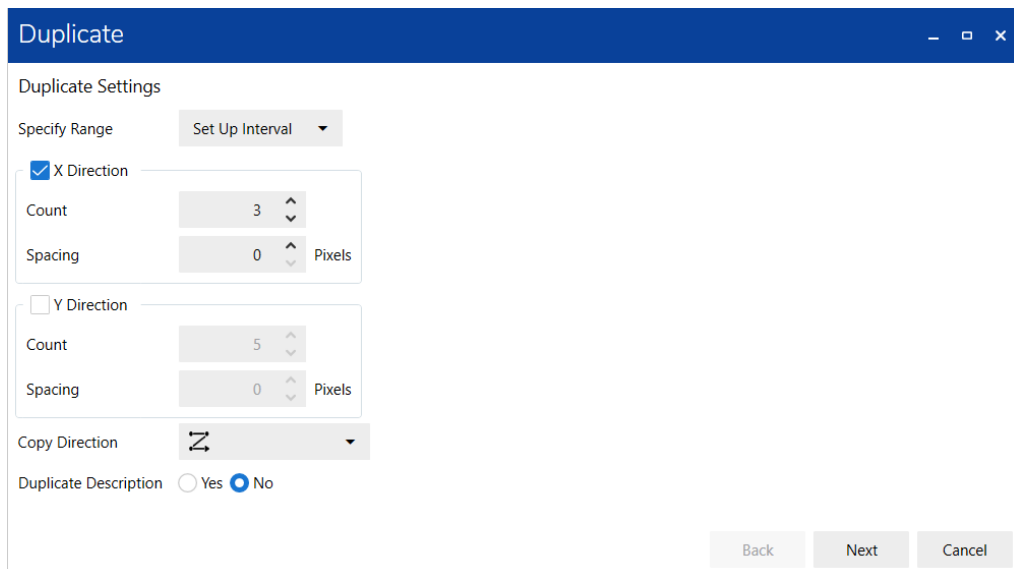
1. Select Screen (where GPS Fan is placed) and then select the Grid Object.
2. In properties tab, change the value of Width and Height.



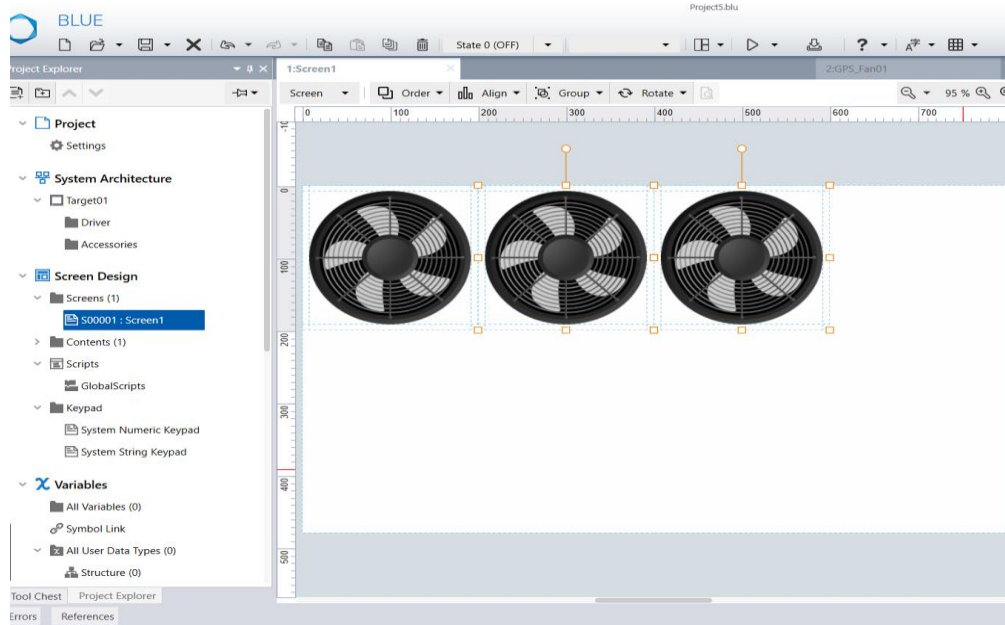
Note: Set same value of width and height to maintain the shape.

## How to Duplicate Grid Parts

1. In screen, select the Grid object and click the duplicate icon.  
Result: Duplicate window appears
2. Select all desired fields (direction to copy, the number, increment source property ....) and click "Duplicate"



Result: The Grid objects are duplicated.



**Note:**

Duplicate feature can be used, only if common variable/converter is used.

To use an independent Grid object, repeat the below steps,

- Rename the Variable and converter of first Grid object.
- Execute Copying of Grid Object again from template project. For more details, refer [How to copy the objects to your project file](#).

**How to Move the Grid Parts**

To move the Grid Parts, select the Grid Parts by dragging a mouse and click the outside frame (within 8 pixels) and move it. Else, the form of the Grid Parts will not be kept.

