

SP5000 Series changes your production site.

## Without using PC, Rewrite JOB programs

It really bothers me that the PC placed on site often breaks down.

Before

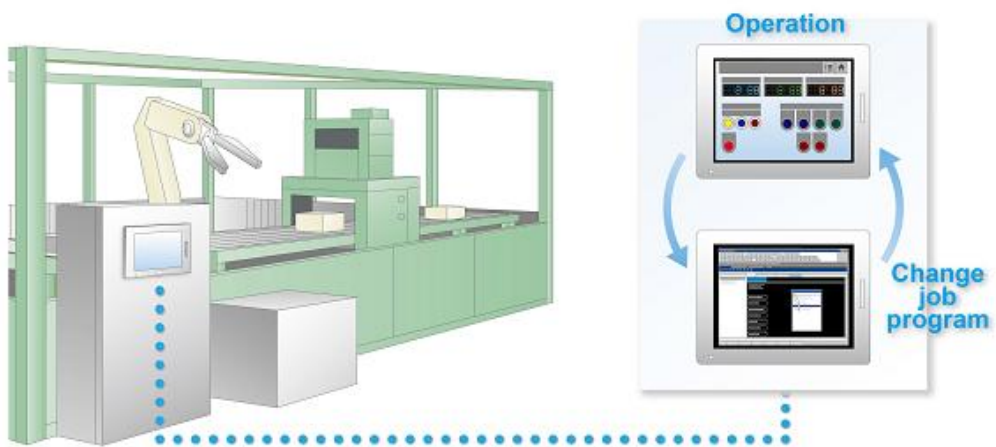
As I frequently rewrite the JOB program of the robot controller, I have put a PC on the production site. But the PC often breaks down because of dust, oil-mist, and vibration there.



No need of PC maintenance. Save space.

After

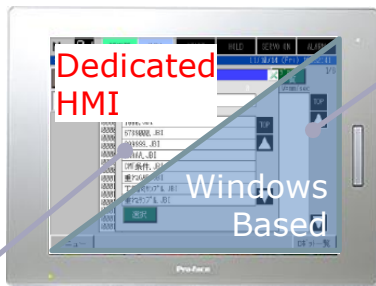
SP5000 can be used as an operation terminal device normally and also used as PC when you rewrite the JOB program. Because SP5000 has high environmental resistance, you can use it with peace of mind.



# System Configuration

Windows-compatible tools for PC can be used on SP5000 (Open Box).

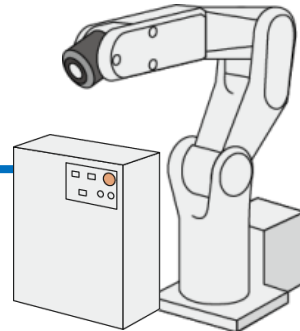
**Used as a general-purpose device. No PC required**  
Because tools for PC can run on SP5000, JOB programs can be edited.



Dedicated HMI

Windows Based

SP5000

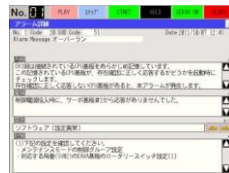


Robot

## Reduce time to create screens with sample screens

Able to check status and JOB programs.

Screens for checking handling of alarms and maintenance time are available.



Download the sample screens from here;

[http://www.proface.co.jp/otasuke/sample/detail/common/feature\\_RobotSelect\\_j.html](http://www.proface.co.jp/otasuke/sample/detail/common/feature_RobotSelect_j.html)

# Lineup "The module design allows free combinations"

## <Premium Display>

Multi-touch operation, auto-scaling, brightness sensor, USB front interface



15" XGA



12" XGA



10" SVGA

## <Advanced Display>

16:9 wide-screen display for a large amount of info.



12" WXGA



10" WXGA



7" WVGA

## <Open Box>

Able to run Windows app. on SP5000



NVRAM 320KB  
RS-232C/422/485×2  
LAN×2, USB A×3 · mini B×1  
SD×1, CFast×2, DVI-D×1



## <Power Box>

Achieves high-speed processing and fast display



NVRAM 320KB  
RS-232C/422/485×2  
LAN×2, USB A×2 & mini B×1  
SD×2

For more information, contact Pro-face office in your country.

**Global Headquarters**  
Tel: +81 (0)6 6208 3133  
info@pro-face.com

**China**  
Tel: +86 (0)21 6361 5175  
proface@proface.com.cn

**Singapore**  
Tel: +65-6832-5533  
info@proface.sg

**South Korea**  
Tel: +82 (0)2 2630 9850  
proface@proface.co.kr

**Taiwan**  
Tel: +886 (0)2 2657 1121  
proface@proface.com.tw

**South-East Asia Pacific**  
Tel: +66 (0)2 617 5678  
pfsales@proface.co.th

**India**  
Tel: +91 80 4333 3540/3541  
sales.proface@proface.co.in

**Australia and New Zealand**  
Tel: +61 (0)3 9550 7396  
pfau@pro-face.com

**North America**  
Tel: +1 734 477 0600  
info@profaceamerica.com

**European Headquarters**  
Tel: +31 (0)23 55 44 099  
info@proface.eu

**France**  
Tel: +33 (0)1 60 21 22 91  
info@proface.fr

**Austria**  
Tel: +43 7236 3343 620  
info@proface.at

**United Kingdom**  
Tel: +44 (0)2476 511288  
info@proface.co.uk

**Germany**  
Tel: +49 (0)212 258 260  
info@pro-face.de

**Italy**  
Tel: +39 (0)362 59 96 1  
info@proface.it

**Denmark**  
Tel: +45 70 22 01 22  
info@proface.dk

**Sweden**  
Tel: +46 46 540 90 70  
info@proface.se

**Switzerland**  
Tel: +41 (0)43 343 7272  
info@proface.ch

**Spain and Portugal**  
Tel: +34 (0)93 846 07 45  
info@proface.es